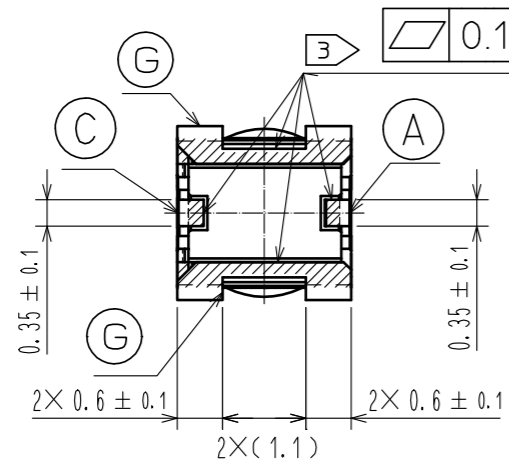
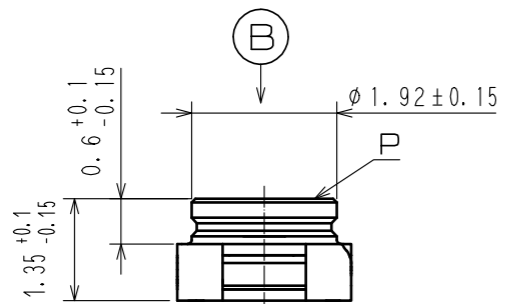
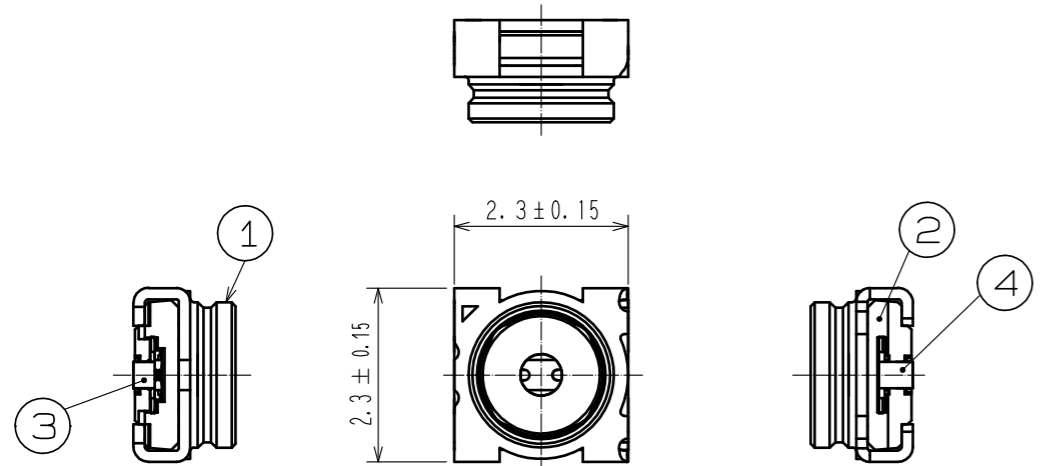
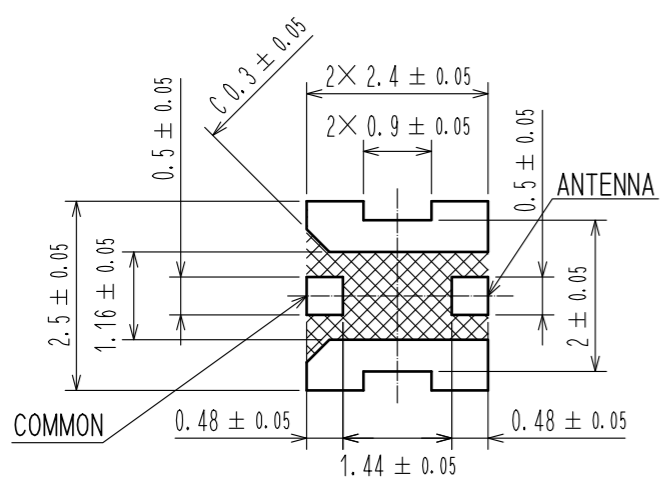


Jun.1.2024 Copyright 2024 HIROSE ELECTRIC CO., LTD. All Rights Reserved.  
 In case of consideration for using Automotive equipment / device which demand high reliability, kindly contact our sales window correspondents.

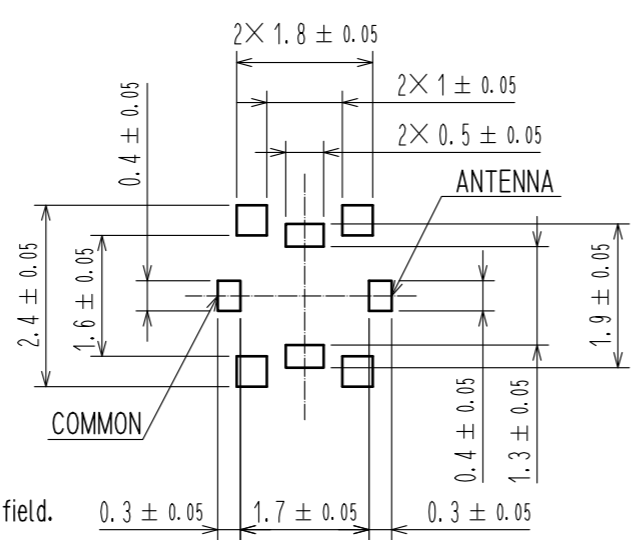


5 SPECIFIED PCB LAYOUT

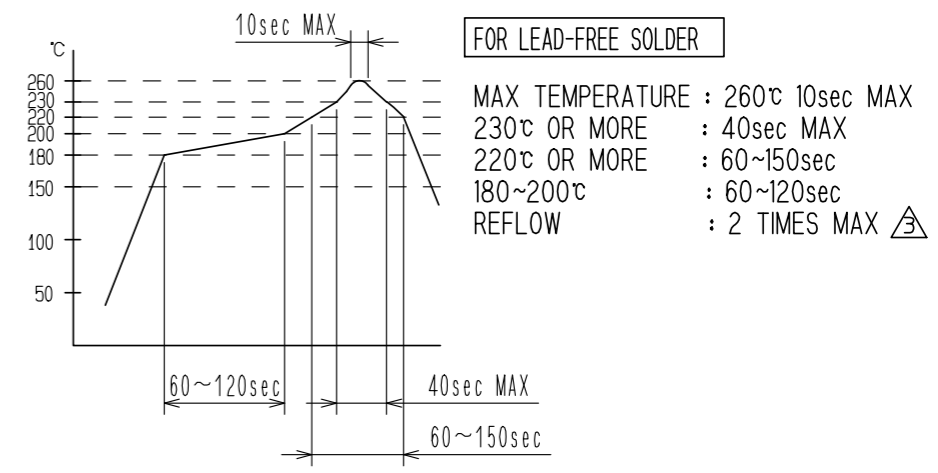
5 SPECIFIED STENCIL PLATE THICKNESS: 0.1mm



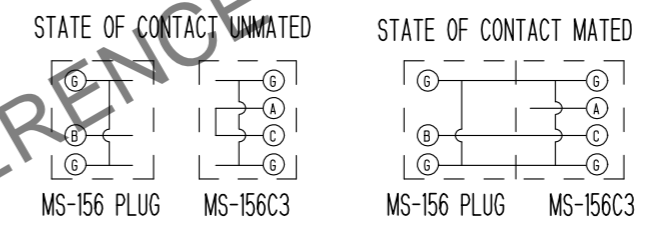
: This area must be free of conductive traces and resist field.



RECOMMENDED REFLOW TEMPERATURE PROFILE



NOTE 1. Circuit shall be as follows.

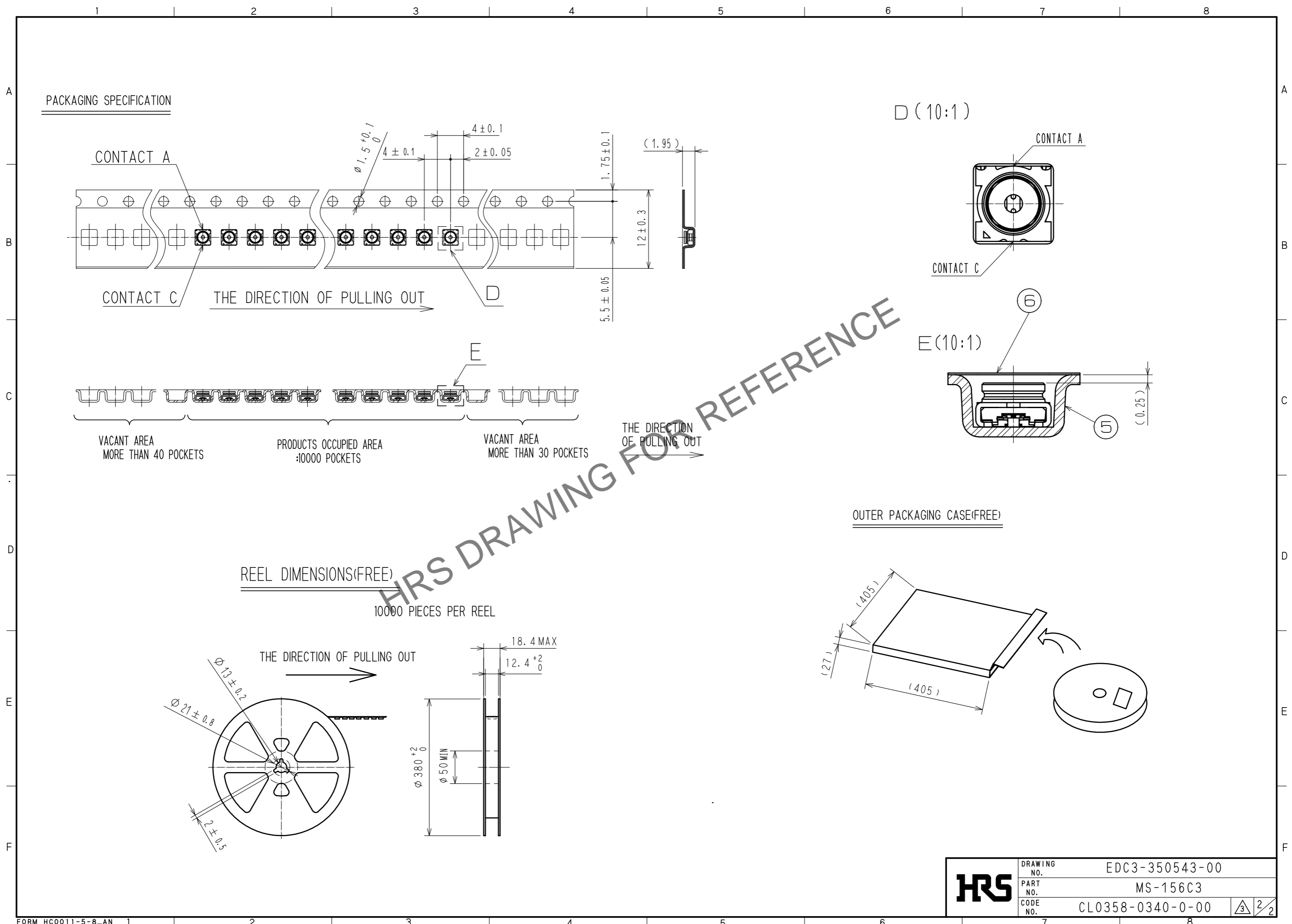


2. For use of this product, be sure to put contact area of plug on position P perpendicularly.
3. Lead co-planarity is to be 0.1mm MAX.
4. Do not use the washing process.
5. Please do not change the specified layout of the PCB dimension and the layout of the stencil plate dimension and thickness otherwise could not be responsible for the solderability of the product.
6. This product is intended to be used for circuit inspection only. Consult us if any other application is considered.
7. Do not use hand soldering for mounting of MS-156C3.

HALOGEN FREE COMPLIANT

3	CU-NI-SI-ALLOY	SELECTIVE GOLD PLATING	6	PET	
2	PA-M		5	PS	
1	PHOSPHOR BRONZE	GOLD PLATING	4	PHOSPHOR BRONZE	SELECTIVE GOLD PLATING
NO.	MATERIAL	FINISH . REMARKS	NO.	MATERIAL	FINISH . REMARKS
UNITS		SCALE	COUNT	DESCRIPTION OF REVISIONS	
mm		10 : 1	1	DIS-D-00014617	
APPROVED : MH. YAMANE			20131129	DESIGNED	MT. KANEKO
CHECKED : NK. NINOMIYA			20131128	CHECKED	NK. NINOMIYA
DESIGNED : TS. NAKAGAWA			20131127	DATE	20230124
DRAWN : TS. NAKAGAWA			20131127	DRAWING NO. EDC3-350543-00	
PART NO. MS-156C3				CODE NO. CL0358-0340-0-00	
1/2					

Jun.1.2024 Copyright 2024 HIROSE ELECTRIC CO., LTD. All Rights Reserved.  
 In case of consideration for using Automotive equipment / device which demand high reliability, kindly contact our sales window correspondents.



HRS DRAWING FOR REFERENCE

<b>HRS</b>	DRAWING NO.	EDC3-350543-00	<table border="1"> <tr> <td>3</td> <td>2</td> </tr> </table>	3	2
	3	2			
	PART NO.	MS-156C3			
	CODE NO.	CL0358-0340-0-00			