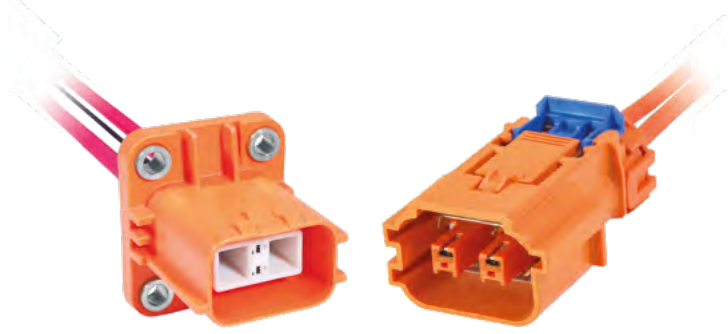


SHIELDPACK™ HV 280 SI



ShieldPack™
HV 280 SI



BENEFITS

- Inner connector with TPA can be plugged into header during device assembly (on wire-to-device)
- Industry-leading vibration performance
- Field proven design used across electrification market

FEATURES

- Tool-less unmating system
- Finger proof/touch safe
- Aluminum compression bushings
- ISO cable compatible



AVAILABLE CONFIGURATIONS

Connector Type	Wire-to-device, wire-to-wire
Cable Exit Orientation	180°, 90°
Cable Range (mm ²)	2 - 5 (power) 0.5 (HVIL)
Terminal Type	CTS 2.8, Metri-pack 2.8
# of Terminals	2
Shielding Type	Individual
HVIL	Shunt on female
Assembly Assurance	CPA/TPA
Number of Indexes	3 (180°), 1 (90°)



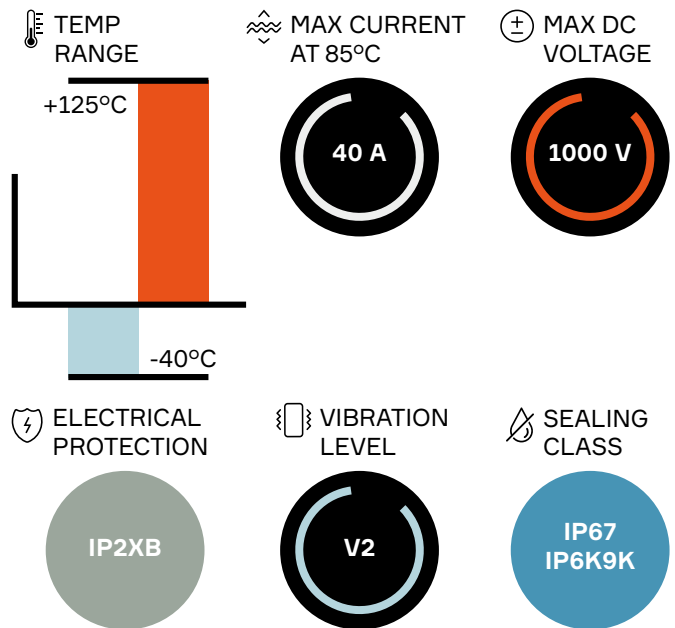
APPLICATIONS

Battery pack, DC / DC converter,
On-board charger (OBC)

See back page for representative part numbers and packaging dimensions.



TECHNICAL CHARACTERISTICS



About Aptiv

Aptiv is a global technology company that develops safer, greener and more connected solutions enabling the future of mobility.

Visit [aptiv.com](https://www.aptiv.com) →



• **APTIV** •



2 Way 180° Connection System with Pluggable Inner Connector

2 Way 180° Connection System without Pluggable Inner Connector

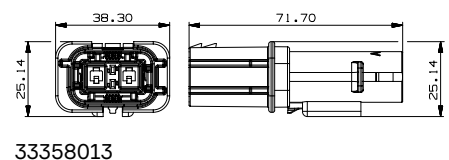
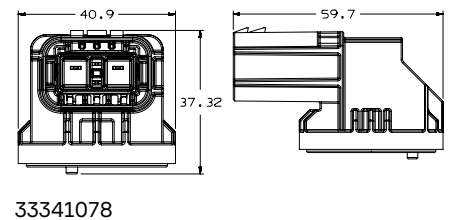
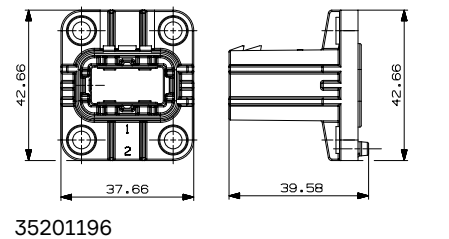
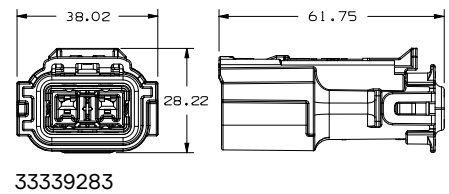
2 Way 90° Connection System

Index	Header with pluggable inner connector		Header	Male inline connector	Mating connector	BOM
	Outer Header	Inner connector				
2 Way 180° Connection System						
101	35201196	15526394	33240508	33358013	33339283	1
102	35201197	15526395	33240509	33358014	33353455	
103	35201198	15526396	33240510	33358015	33353456	
2 Way 90° Connection System						
101	33341078	33341079	–	–	33339283	1

ASSOCIATED PARTS

Part number	Description	BOM
Header		
13753470	Metri-pack 2.8 male terminal 1 - 2 mm ²	2
13753471	Metri-pack 2.8 male terminal 3 mm ²	
13790534	Metri-pack 2.8 male terminal 4 - 5 mm ²	
15432235	CTS HVIL female terminal 0.5 mm ²	2
15526390	TPA	1
Inline Male		
13753470	Metri-pack 2.8 male terminal 1 - 2 mm ²	2
13753471	Metri-pack 2.8 male terminal 3 mm ²	
13790534	Metri-pack 2.8 male terminal 4 - 5 mm ²	
13737699	Inner ferrule 3 mm ²	2
33292550	Inner ferrule 5 mm ²	
13737702	Outer ferrule 3 mm ²	2
33292551	Outer ferrule 5 mm ²	
15513453	Cable seal 3 mm ²	1
15513451	Cable seal 5 mm ²	1
13824779	TPA / strain relief 3 mm ²	1
13888072	TPA / strain relief 5 mm ²	1
Mating connector		
13882331	CTS 2.8 female terminal 3 - 5 mm ²	2
13737699	Inner ferrule 3 mm ²	2
33292550	Inner ferrule 5 mm ²	
13737702	Outer ferrule 3 mm ²	2
33292551	Outer ferrule 5 mm ²	
15513453	Cable seal 3 mm ²	1
15513451	Cable seal 5 mm ²	1
13824779	TPA / strain relief 3 mm ²	1
13888072	TPA / strain relief 5 mm ²	1

DIMENSION MEASUREMENT SAMPLE



Part numbers, specifications, dimensions and performance data in this document are for general references only and are subject to change without notice. To verify product information, please contact an Aptiv representative.