

# ME 17,5 TBUS ADAPTER KMGY - DIN rail bus connectors

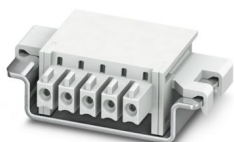


2201757

<https://www.phoenixcontact.com/us/products/2201757>

Please be informed that the data shown in this PDF document is generated from our online catalog. Please find the complete data in the user documentation. Our general terms of use for downloads are valid.

DIN rail bus adapter for ME and ME-MAX, design width: 17.5 mm, 5 parallel positions, color: light gray (similar to RAL 7035)



## Your advantages

- Space-saving DIN rail mounting

## Commercial data

Item number	2201757
Packing unit	50 pc
Minimum order quantity	50 pc
Sales key	AC08
Product key	ACHACA
Catalog page	Page 39 (NTK-2014)
GTIN	4046356909037
Weight per piece (including packing)	3.636 g
Weight per piece (excluding packing)	3.636 g
Customs tariff number	85366990
Country of origin	DE

# ME 17,5 TBUS ADAPTER KMGY - DIN rail bus connectors



2201757

<https://www.phoenixcontact.com/us/products/2201757>

## Technical data

### Product properties

Product type	DIN rail connector
Product family	TBUS5-17,5..
Number of positions	5
Pitch	3.81 mm

### Data management status

Article revision	05
------------------	----

### Material specifications

Color (Housing)	light gray (RAL 7035)
Flammability rating according to UL 94	V0
Insulating material	PA
Housing material	Polyamide

### Dimensions

Width	17.5 mm
Pitch	3.81 mm

# ME 17,5 TBUS ADAPTER KMGY - DIN rail bus connectors





2201757

<https://www.phoenixcontact.com/us/products/2201757>

## Approvals

To download certificates, visit the product detail page: <https://www.phoenixcontact.com/us/products/2201757>

 <b>cUL Recognized</b> Approval ID: E118976-20151204				
	Nominal voltage $U_N$	Nominal current $I_N$	Cross section AWG	Cross section $\text{mm}^2$
	150 V	6 A	-	-

 <b>UL Recognized</b> Approval ID: E118976-20151204				
	Nominal voltage $U_N$	Nominal current $I_N$	Cross section AWG	Cross section $\text{mm}^2$
	150 V	8 A	-	-

**cULus Recognized**

# ME 17,5 TBUS ADAPTER KMGY - DIN rail bus connectors



2201757

<https://www.phoenixcontact.com/us/products/2201757>

## Classifications

### ECLASS

ECLASS-11.0	27460201
ECLASS-12.0	27460201
ECLASS-13.0	27460201

### ETIM

ETIM 9.0	EC002637
----------	----------

### UNSPSC

UNSPSC 21.0	39121400
-------------	----------

# ME 17,5 TBUS ADAPTER KMGY - DIN rail bus connectors



2201757

<https://www.phoenixcontact.com/us/products/2201757>

## Environmental product compliance

### EU RoHS

Fulfills EU RoHS substance requirements	Yes, No exemptions
---	--------------------

### China RoHS

Environment friendly use period (EFUP)	EFUP-E
	No hazardous substances above the limits

### EU REACH SVHC

REACH candidate substance (CAS No.)	No substance above 0.1 wt%
-------------------------------------	----------------------------

Phoenix Contact 2024 © - all rights reserved  
<https://www.phoenixcontact.com>

Phoenix Contact USA  
586 Fulling Mill Road  
Middletown, PA 17057, United States  
(+717) 944-1300  
[info@phoenixcon.com](mailto:info@phoenixcon.com)