



Passive Components > Resistors > Surface Mount Resistors



Resistor Type: **Power Resistor**  
Element Type: **Thick Metal Film**  
Power Rating: **6 W**  
Resistance Value: **8.2 Ω**  
Resistance Class: **Up to 1kΩ**

Features

Product Type Features

Resistor Type	Power Resistor
Element Type	Thick Metal Film

Configuration Features

Number of Resistors	1
---------------------	---

Electrical Characteristics

Operating Voltage	300 V
Power Rating	6 W
Resistance Value	8.2 Ω
Resistance Class	Up to 1kΩ
Passive Component Tolerance	1 %

Termination Features

Surface Mount Resistor Termination Type	Solder
Number of Terminations	2



Dimensions

Product Height	1.1 mm[.043 in]
Product Length	11.6 mm[.457 in]
Product Width	6.85 mm[.27 in]

Usage Conditions

Temperature Coefficient	±200 ppm/°C
-------------------------	-------------

Packaging Features

Packaging Method	Taped & Reeled
------------------	----------------

Product Compliance

For compliance documentation, visit the product page on TE.com>

EU RoHS Directive 2011/65/EU	Compliant with Exemptions
EU ELV Directive 2000/53/EC	Compliant with Exemptions
China RoHS 2 Directive MIIT Order No 32, 2016	Restricted Materials Above Threshold
EU REACH Regulation (EC) No. 1907/2006	Current ECHA Candidate List: JUNE 2024 (241) Candidate List Declared Against: JUNE 2023 (235) Does not contain REACH SVHC
Halogen Content	Low Halogen - Br, Cl, F, I < 900 ppm per homogenous material. Also BFR/CFR/PVC Free
Solder Process Capability	Reflow solder capable to 260°C

Product Compliance Disclaimer

This information is provided based on reasonable inquiry of our suppliers and represents our current actual knowledge based on the information they provided. This information is subject to change. The part numbers that TE has identified as EU RoHS compliant have a maximum concentration of 0.1% by weight in homogenous materials for lead, hexavalent chromium, mercury, PBB, PBDE, DBP, BBP, DEHP, DIBP, and 0.01% for cadmium, or qualify for an exemption to these limits as defined in the Annexes of Directive 2011/65/EU (RoHS2). Finished electrical and electronic equipment products will be CE marked as required by Directive 2011/65/EU. Components may not be CE marked. Additionally, the part numbers that TE has identified as EU ELV compliant have a maximum concentration of 0.1% by weight in homogenous materials for lead, hexavalent chromium, and mercury, and 0.01% for cadmium, or qualify for an exemption to these limits as defined in the Annexes of Directive 2000/53/EC (ELV). Regarding the REACH Regulation, the information TE provides on SVHC in articles for this part number is based on the latest European Chemicals Agency (ECHA) 'Guidance on requirements for substances in articles' posted at this URL: <https://echa.europa.eu/guidance-documents/guidance-on-reach>

Compatible Parts



TE Part # 3-2176406-1  
3560 18R 1%

TE Part # 3-2176406-2  
3560 20R 1%

TE Part # 8-2176406-0  
3560 2K0 1%

TE Part # 8-2176406-3  
3560 2K7 1%

TE Part # 4-2176406-1  
3560 47R 1%

Also in the Series | CGS 3560

Surface Mount Resistors(254)

Customers Also Bought

TE Part #640456-3  
03P MTA100 HDR ASSY F/L SQ STR

TE Part #4-1879234-2  
SMF5 27K 5%

TE Part #1-2176406-5  
3560 3R9 1%

TE Part #1-2176406-7  
3560 4R7 1%

TE Part #1-2176406-9  
3560 5R6 1%

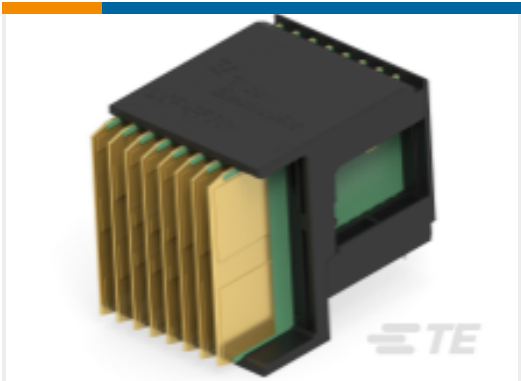
TE Part #4-2176406-4  
3560 62R 1%

TE Part #2-2176406-1  
3560 6R8 1%

TE Part #1925222-9  
TMN2N015SC2DM018T = M32139/04-B05TNS



TE Part #1546657-2  
2P PCV DUAL BARRIER,0.250



TE Part #2289944-1  
MULTIGIG, ASSY, HALF, LEFT 7 ROW, 20.3MM

Documents

Product Drawings

3560 8R2 1%

English

CAD Files

3D PDF

3D

Customer View Model

ENG\_CVM\_CVM\_2-2176406-3\_A.2d\_dxf.zip

English

Customer View Model

ENG\_CVM\_CVM\_2-2176406-3\_A.3d\_igs.zip

English

Customer View Model

ENG\_CVM\_CVM\_2-2176406-3\_A.3d\_stp.zip

English

By downloading the CAD file I accept and agree to the [Terms and Conditions](#) of use.

Datasheets & Catalog Pages

SMD HIGH POWER RESISTORS - TYPE 3660 SERIES

English