



Kilovac | Kilovac LEV200

TE Internal #: 1618387-7

High Voltage Contactor, DC, 1 Form X SPST-NO-DM, 500 A
 Contact Rating, 12 VDC Coil Voltage, Chassis, Environmentally
 Sealed, Kilovac LEV200

[View on TE.com >](#)

Relays & Contactors > Contactors > DC Contactors



Relay & Contactor Type: **High Voltage Contactor**

Contact Arrangement: **1 Form X SPST-NO-DM**

Contact Number of Poles: **1**

Current Type: **DC**

Contact Current Rating: **500 A**

Features

Product Type Features

Relay & Contactor Type	High Voltage Contactor
------------------------	------------------------

Configuration Features

Auxiliary Switch Contact Arrangement	None
Contact Arrangement	1 Form X SPST-NO-DM
Contact Number of Poles	1

Electrical Characteristics

Contact Current Rating	500 A
Coil Voltage Rating	12 VDC
Contact Switching Voltage (Max)	900 VDC
Coil Resistance	11 Ω

Body Features

Enclosure Type	Environmentally Sealed
----------------	------------------------

Termination Features

Main Termination & Connection Type	M8 x 1.25
Coil Termination & Connection Type	10-32 Stud

Mechanical Attachment

Torque (Main)	80 – 100 in-lbs
Torque (Coil)	15 – 30 in-lbs



Product Mount Type	Chassis
--------------------	---------

Dimensions

Wire Size	.34 mm ²
-----------	---------------------

Operation/Application

Current Type	DC
--------------	----

Packaging Features

Packaging Method	Individual
------------------	------------

Product Compliance

[For compliance documentation, visit the product page on TE.com>](#)

EU RoHS Directive 2011/65/EU	Compliant
EU ELV Directive 2000/53/EC	Compliant
China RoHS 2 Directive MIIT Order No 32, 2016	No Restricted Materials Above Threshold
EU REACH Regulation (EC) No. 1907/2006	Current ECHA Candidate List: JUNE 2024 (241) Candidate List Declared Against: JAN 2023 (233) Does not contain REACH SVHC
Halogen Content	Low Halogen - Br, Cl, F, I < 900 ppm per homogenous material. Also BFR/CFR/PVC Free
Solder Process Capability	Not applicable for solder process capability

Product Compliance Disclaimer

This information is provided based on reasonable inquiry of our suppliers and represents our current actual knowledge based on the information they provided. This information is subject to change. The part numbers that TE has identified as EU RoHS compliant have a maximum concentration of 0.1% by weight in homogenous materials for lead, hexavalent chromium, mercury, PBB, PBDE, DBP, BBP, DEHP, DIBP, and 0.01% for cadmium, or qualify for an exemption to these limits as defined in the Annexes of Directive 2011/65/EU (RoHS2). Finished electrical and electronic equipment products will be CE marked as required by Directive 2011/65/EU. Components may not be CE marked. Additionally, the part numbers that TE has identified as EU ELV compliant have a maximum concentration of 0.1% by weight in homogenous materials for lead, hexavalent chromium, and mercury, and 0.01% for cadmium, or qualify for an exemption to these limits as defined in the Annexes of Directive 2000/53/EC (ELV). Regarding the REACH Regulation, the information TE provides on SVHC in articles for this part number is based on the latest European Chemicals Agency (ECHA) 'Guidance on requirements for substances in articles' posted at this URL: <https://echa.europa.eu/guidance-documents/guidance-on-reach>

Compatible Parts



TE Part # 4-1618391-2
LEV100A6ANH=RELAY,SPST-NO,
48VDC VMT 15

Also in the Series | Kilovac LEV200

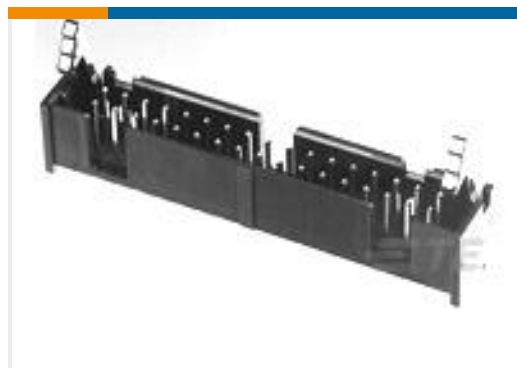


Electromechanical Relays(33)

Customers Also Bought



TE Part #5102159-3
AMP-LATCH UNIVERSAL HEADERS



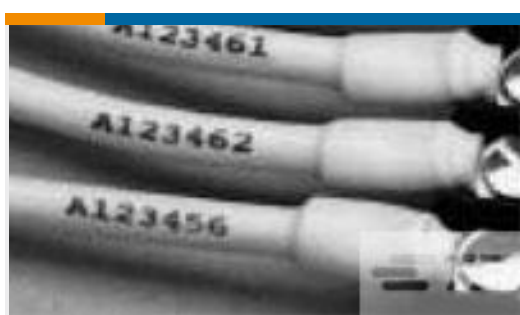
TE Part #2-1761606-8
IDC LOW PRO HDR 24P VERT LG LA



TE Part #5-1618388-8
LEV200A6NAA=RELAY, SPST-NO



TE Part #SM1-25
Shielded Cable Mini String Pot



TE Part #5054232025
RNF-100-1/2-8-STK



TE Part #1546670-6
6P .437" DR BARRIER,W/BND SCRW



TE Part #8-1618388-3
LEV200AKANA=RELAY, SPST-NO



TE Part #8-1618404-1
LEV200AKNAF=RELAY, SPST-NO
72VDC

Documents

[CAD Files](#)

[3D PDF](#)

[3D](#)

[Customer View Model](#)

[ENG_CVM_CVM_1618387-7_D.2d_dxf.zip](#)

English



Customer View Model

[ENG_CVM_CVM_1618387-7_D.3d_igs.zip](#)

English

Customer View Model

[ENG_CVM_CVM_1618387-7_D.3d_stp.zip](#)

English

By downloading the CAD file I accept and agree to the [Terms and Conditions](#) of use.

Datasheets & Catalog Pages

[5-1773450-5_sec7_LEV200](#)

English