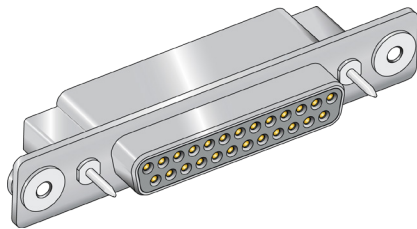


280-031S float mount socket connectors for blind mating, crimp termination



280-031S HiPer-D® socket connectors feature stainless steel floating bushings for blind mate applications. Attach to panel with #4-40 screws (not supplied with connector). Crimp, rear-releaseable size #20 or #22 contacts. Intermateable with standard M24308-type D-Subminiature connectors, the HiPer-D® features a rugged machined aluminum shell and rubber grommet. Threaded holes on the rear of the connector allow attachment of HiPer-D® EMI backshells. Contacts are packaged with connector. Terminate contacts with crimp tools purchased separately. Glass-reinforced thermoset epoxy insulators, copper alloy retention clips. Connector meets IP67 immersion requirement. 1000 VAC, 5 Amps (#22) or 7.5 Amps (#20).

B

Ordering Information				
Sample Part Number	280-031S	2H26	Z2	G
Basic Part Number	280-031S			
Shell Size-Contact Arrangement	See Shell Size - Contact Arrangements Table			
Shell Finish	ME = Electroless Nickel MT = Nickel-PTFE JF = Cadmium with Yellow Chromate Z2 = Gold Z1 = Passivated Stainless Steel			
Mating Hardware	N = No Hardware (supplied with #8-32 tapped holes) G = Male Guide Pins B = Female Guide Bushings			

Shell Size - Contact Arrangements		
Shell Size-Contact Arr.	Contact Size and Qty	
	#20	#22
Standard Density		
1S9	9	
2S15	15	
3S25	25	
4S37	37	
5S50	50	
High Density		
1H15		15
2H26		26
3H44		44
4H62		62
5H78		78
6H104		104

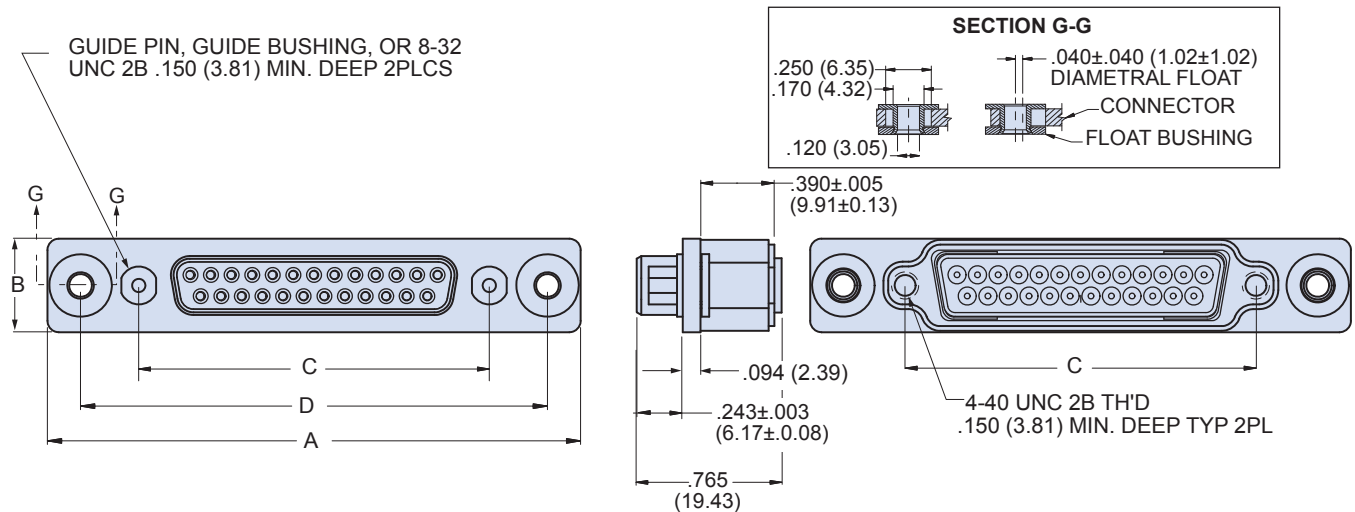
Mating Hardware
N No Hardware #8-32 tapped hole
B Female Guide Bushings
G Male Guide Pins

Materials and Finishes	
Shell	Aluminum alloy
Contacts	Copper alloy, 50 micron. gold plated
Insulators	Thermoset epoxy
Retention Clips	Copper alloy
Grommet	Fluorosilicone rubber
Hardware	300 series stainless steel

Specifications	
Current Rating	#22 5 AMPS, #20 7.5 AMPS
Test Voltage	1000 VAC RMS
Insulation Resistance	5000 megohms minimum
Operating Temperature	-65° C. to +200° C.
Ingress Protection	IP 67
Shock	300 g.
Vibration, Random	43.92 g.

280-031S float mount socket connectors for blind mating, crimp termination

280-031S DIMENSIONS



Shell Size	A		B		C Basic		D Basic	
	in ±.015	mm ± 0.38	in ±.015	mm ± 0.38	in.	mm	in.	mm
1	1.986	50.44	.494	12.55	.984	24.99	1.636	41.55
2	2.314	58.78	.494	12.55	1.312	33.32	1.964	49.89
3	2.854	72.49	.494	12.55	1.852	47.04	2.504	63.60
4	3.502	88.95	.494	12.55	2.500	63.50	3.152	80.06
5	3.408	86.56	.600	15.24	2.406	61.11	3.058	77.67
6	3.502	88.95	.662	16.81	2.500	63.50	3.152	80.06

NOTES

- HiPer-D® connectors are available with a wide variety of materials and finishes. See [About Series 28 HiPer-D® Shell Plating Options](#) for additional choices. Glenair offers the industry's widest selection of plating and material choices with no setup charge, no minimum order quantity and no schedule impact.
- For panel cutout dimensions, refer to [Panel Cutouts and Printed Circuit Board Footprints](#).
- Connectors are supplied with crimp contacts per M39029. Contacts are not installed. Refer to [HiPer-D® Contacts and Crimp Tools](#) for contact part numbers, specifications, crimp tool information, and insertion/extraction tools.
- HiPer-D® connectors meet the requirements of MIL-DTL-24308 and are intermateable with standard M24308-type D-Subminiature connectors with corresponding contact arrangements and type.
- Additional electrical, mechanical and environmental specifications are listed in [HiPer-D® Product Specification](#).