

SAMZO REAC/ROHS

REV	ECN NO	DESCRIPTION	DESIGN	APPROVAL	DATE
A1	NEW	Replace frame			2018.06.12

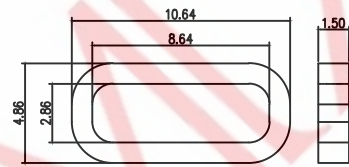
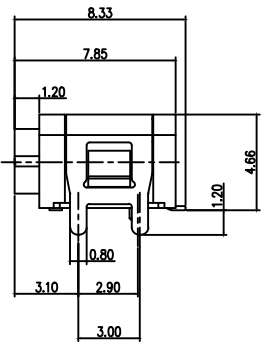
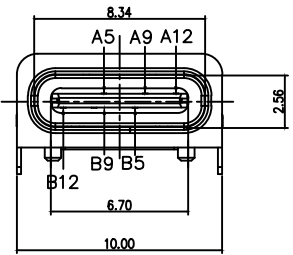
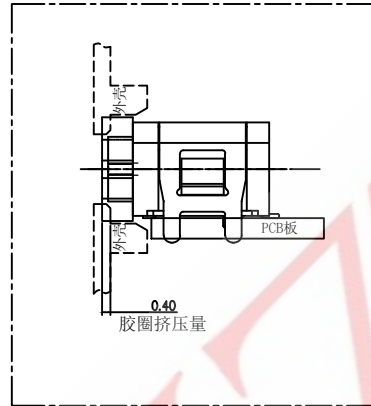
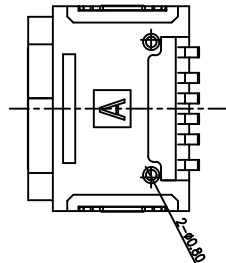
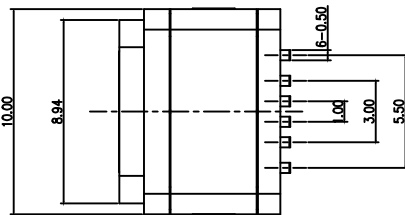
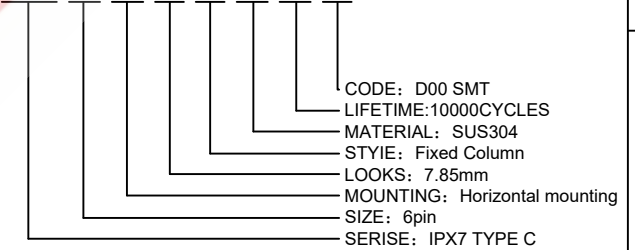
组装示意图



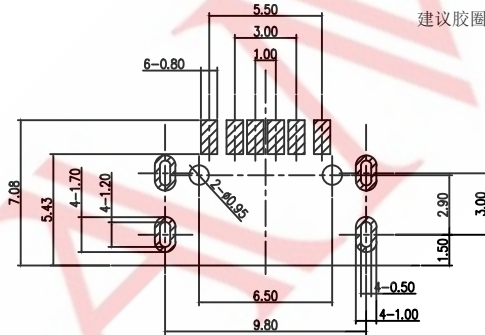
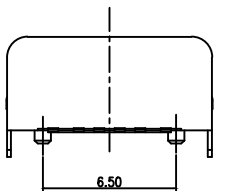
SPECIFICATIONS:

- ELECTRICAL CHARACTERISTICS:
  - RATING: 3A;
  - CONTACT RESISTANCE: 30 mΩ MAX.(INITIAL);
  - DIELECTRIC WITHSTANDING: 100V AC MIN.;
  - INSULATION RESISTANCE: 100MΩ MIN.;
- DURABILITY: 10,000 CYCLES MIN.;
- INSERTION FORCE: 5-20N;
- EXTRACTION FORCE: 6-20N;
- WATER PROOFNESS: THIS PRODUCT IS BASED ON IPX7.
- PLUG INTERFACE DIMENSIONS CONFORM TO USB2.0 SPEC.
- PACKAGING: TAPE & REEL.

FKDDAACCA

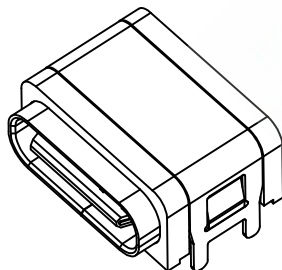


建议胶圈尺寸



A5	CC1	B12	GND
A9	VBUS	B9	VBUS
A12	GND	B5	CC2
PIN	SIGNAL NAME	PIN	SIGNAL NAME

3	Shell	1	SUS304R-1/2H Ni Plating T=0.25mm	
2	Contact	6	Phosphor bronze C5191R-EH Au/Ni Plating T=0.20mm	
1	Housing	1	PA10T (G.F30%)	
ITEM	PART NAME	Q'TY	FINISH	NOTE



				FIRST VIEW			
				GENERAL TOLERANCE			
		≥0~2<	±0.15	SCALE	1:1	UNIT	mm
DESIGN	WANGGUIFA	2018.06.12	≥2~5<	SAMZO COMPONENTS			
CHECKED	ZHENGUILAN	2018.06.12	≥0~2<	Electronic switch and connector manufacturer			
APPROVED	LILIANJIANG	2018.06.14	≥5				

The copyright belongs to samzo parts [China] Co., Ltd. please use the material after samzo parts agree to authorize. The final right of interpretation belongs to samzo parts. WWW.KKK-JP.COM

TITLE: TYPE C 2.0 6Pin SMT Type IPX7	
DWG NO: FKD06-P0001	
PART NO: FKD06210312M	
MODEL NO: FKDDAACCA	
NAME: TYPE-C CONN	