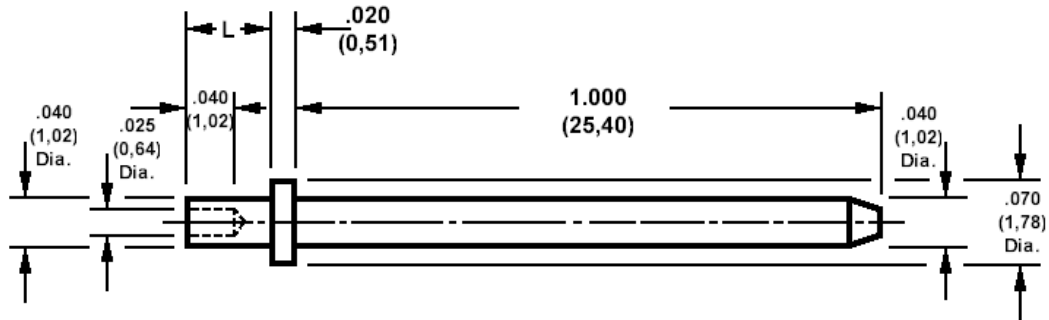


460-2948 Swage Mount, .040 (1,02) Diameter Pin

Recommended mounting hole .043 (1,09) ± .001 (0,03).



How to order code

460-2948-XX-YY-00

Basic Part No XX = L dimension, YY = Plating Finish

| DIMENSIONS (XX) | | | |
|-------------------|------|-------------|---------------------|
| Basic Part Number | (XX) | L | For Board Thickness |
| 460-2948 | -01 | .051 (1,30) | .031 (0,79) |
| | -02 | .082 (2,08) | .062 (1,57) |
| | -03 | .113 (2,87) | .094 (2,39) |

| MATERIALS | | | |
|-----------|----------|------------------|--------------|
| Component | Material | Finish (-03) | Finish (-04) |
| Pin | Brass | Gold over Nickel | Electro Tin |

| SWAGE TOOLING | |
|-----------------------------|-------------------|
| Recommended Swaging Tools:- | |
| Anvil | 435-6520-03-00-00 |
| Roll Punch | 435-6642-01-00-00 |
| Flare Punch | 435-6690-01-00-00 |

Due to pin length, these tools cannot be used in the manual swager 435-3803-01-00-00