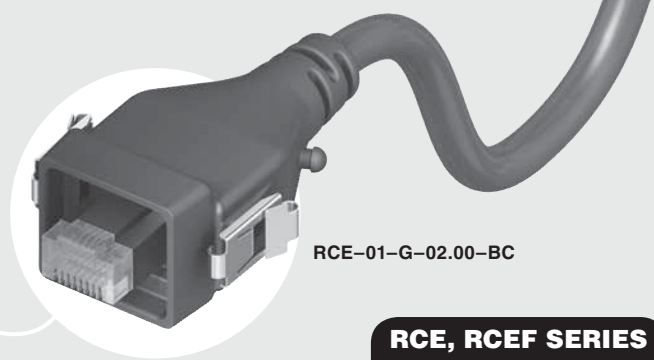


# ACCLIMATE™



RCE-01-G-02.00-BC

## RCE, RCEF SERIES

# IP68 SEALED ETHERNET PLUG

### SPECIFICATIONS

For complete specifications see [www.samtec.com?RCE](http://www.samtec.com?RCE)

**Insulator Material:**  
Black Liquid Crystal Polymer  
**Contact:**  
Phosphor Bronze  
**Operating Temp Range:**  
-40 °C to +75 °C  
**Latch:**  
BeCu  
**Wire:**  
24 AWG

**Mates with:**  
RPBE-01, RPCE

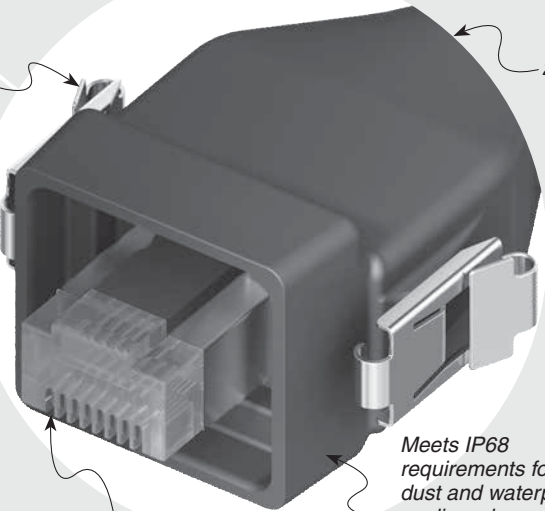


**Solutionator**  
DESIGN IN A MINUTE

- Easy sealed cable solutions
- Build a standard or flexible custom online
- Calculate performance, current rating, voltage drop
- Live chat with AccliMate™ engineers for custom options
- Variety of shells, pin sizes, signal, power, I/O interfaces
- Assembly and field kits available

Audible click positive latching

24 AWG



50 μ" (1.27 μm) Gold on contacts

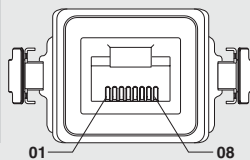
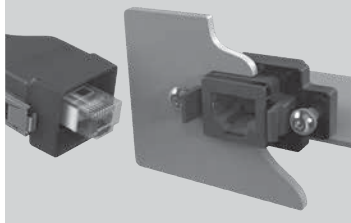
Meets IP68 requirements for dust and waterproof sealing when mated or with dust cap

### ALSO AVAILABLE (MOQ Required)

- Other wire lengths

RCE	CABLE STYLE	PLATING	WIRE LENGTH	END OPTION
	-01 = Outdoor UL	-G = 50 μ" (1.27 μm) Gold on contact	-02.00 = (2 m) 78.74" -03.00 = (3 m) 118.11" -05.00 = (5 m) 196.85" Standard lengths	-D = Double End (Both ends sealed) -BC = Blunt Cut (One end sealed)

### APPLICATION



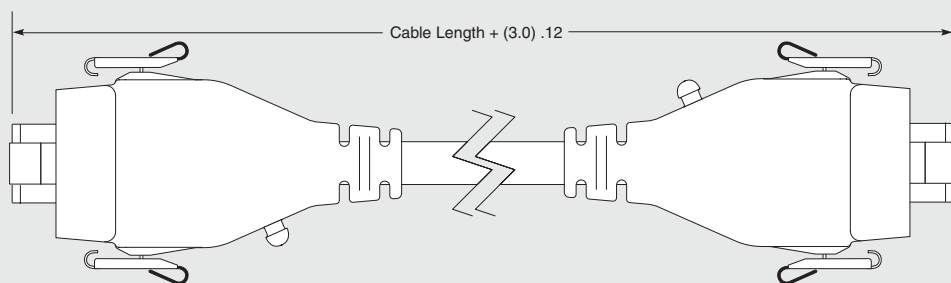
### FIELD TERMINATION KIT

- Ethernet Field Termination Kit available for long cable run and small-opening applications so housings can be customer-installed after the runs are complete.
- RCEF-G-01 Series (For cable outside diameter range of 5.00-5.75 mm)
- RCEF-G-02 Series (For cable outside diameter range of 5.75-6.50 mm)

### DUST CAPS

STYLE	RCE
-01	DCA-RCE-01-01

**Note:**  
Meets IP68 requirements for dust and waterproof sealing when mated or with dust cap.



Due to technical progress, all designs, specifications and components are subject to change without notice.

[WWW.SAMTEC.COM](http://WWW.SAMTEC.COM)

All parts within this catalog are built to Samtec's specifications. Customer specific requirements must be approved by Samtec and identified in a Samtec customer-specific drawing to apply.

# Mouser Electronics

Authorized Distributor

Click to View Pricing, Inventory, Delivery & Lifecycle Information:

## Samtec:

[RCE-01-G-02.00-BC](#) [RCE-01-G-02.00-D](#) [RCE-01-G-05.00-BC](#) [RCE-01-G-00.30-D](#) [RCE-01-G-02.10-BC](#) [RCE-01-G-04.00-BC](#) [RCE-01-G-01.50-BC](#) [RCE-01-G-20.00-BC](#) [RCE-01-G-03.00-BC](#) [RCE-01-G-03.00-D](#) [RCE-01-G-00.60-D](#) [RCE-01-G-10.00-D](#) [RCE-01-G-00.50-BC](#) [RCE-01-G-00.37-D](#) [RCE-01-G-01.00-D](#) [RCE-01-G-00.25-BC](#) [RCE-01-G-00.25-D](#) [RCE-01-G-02.50-D](#) [RCE-01-G-20.00-D](#) [RCE-01-G-25.00-D](#) [RCE-01-G-01.00-BC](#) [RCE-01-G-05.00-D](#) [RCE-01-G-08.00-BC](#) [RCE-01-G-30.00-D](#) [RCE-01-G-30.50-BC](#) [RCE-01-G-40.00-D](#) [RCE-01-G-01.83-D](#) [RCE-01-G-15.00-BC](#) [RCE-01-G-00.50-D](#) [RCE-01-G-00.94-D](#) [RCE-01-G-09.15-D](#) [RCE-01-G-10.00-BC](#) [RCE-01-G-12.00-BC](#) [RCE-01-G-13.00-D](#) [RCE-01-G-06.00-BC](#) [RCE-01-G-04.00-D](#) [RCE-01-G-25.00-BC](#) [RCE-01-G-01.20-D](#)