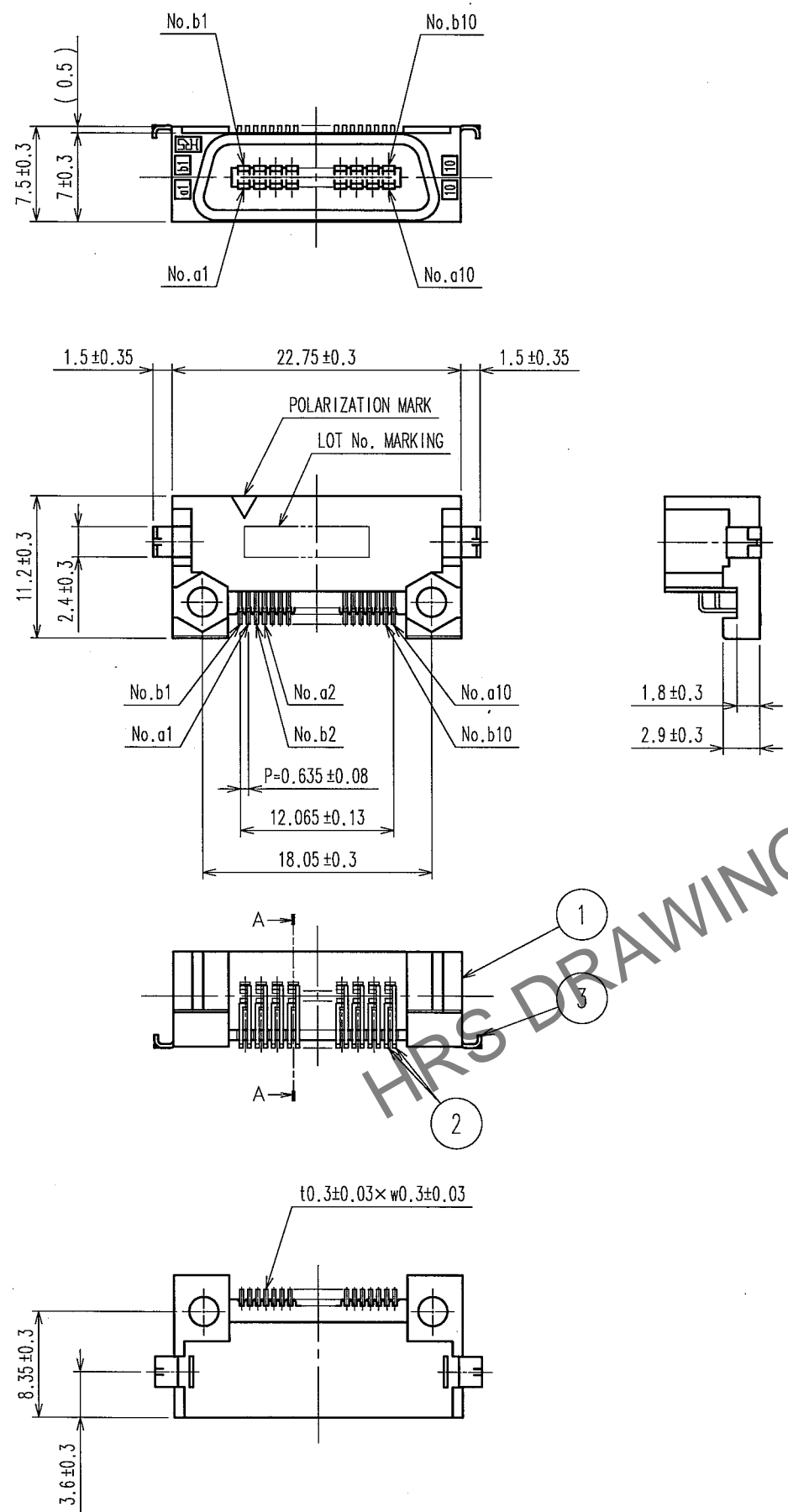
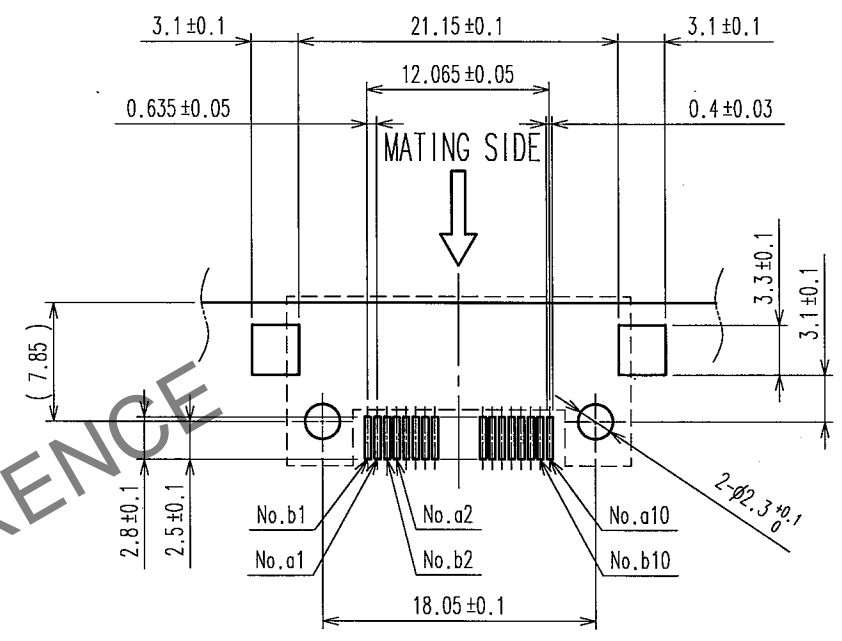


Jul. 1. 2024 Copyright 2024 HIROSE ELECTRIC CO., LTD. All Rights Reserved.
In case of consideration for using Automotive equipment / device which demand high reliability, kindly contact our sales window correspondents.

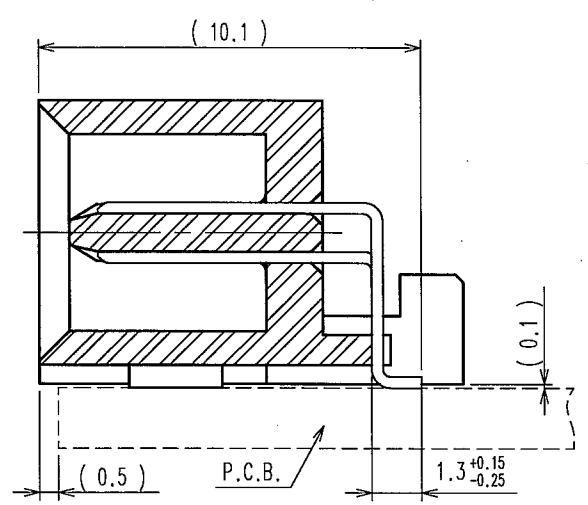


COUNT	DESCRIPTION OF REVISIONS	BY	CHKD	DATE	COUNT	DESCRIPTION OF REVISIONS	BY	CHKD	DATE
△					△				
△					△				
△					△				

RECOMMENDED LAND PATTERN DIMENSION OF PCB (MOUNTING SIDE)
t = 1.6



A-A (5:1)



NOTE 1 LEAD CO-PLANARITY SHALL BE 0.1 MAX.
2 THE DIMENSIONS IN PARENTHESES ARE FOR REFERENCE.

3	BRASS	TIN-PLATING	2	BRASS	CONTACT AREA: GOLD 0.2μm min.
1	PPS	LIGHT BROWN (UL94V-0)			LEAD AREA: TIN-PLATING 2μm min.
					UNDER PLATING: NICKEL 1μm min.
NO.	MATERIAL	FINISH, REMARKS	NO.	MATERIAL	FINISH, REMARKS
CODE NO. (OLD) CL		DRAWN A. SUZUKAWA 06.03.07	DESIGNED H. Nakamura 06.03.13	CHECKED K. Ogawa 06.03.13	APPROVED H. Okawa 06.03.13
DRAWING NO. EDC3-150358-21		PART NO. FX2A-20P-0.635SH(71)		CODE NO. CL572-2771-6-71	
SCALE 2:1		UNITS mm		1/1	
HRS		HIROSE ELECTRIC CO., LTD			