

MATERIAL AND FINISH:

Insulator: Nylon, color black, UL 94V-0 rated  
Positive contact: See Table 1  
Negative contact: Brass, Nickel plated

ELECTRICAL SPECIFICATIONS

Voltage & current rating: 3 VDC, 120 mA  
Inter contact resistance: 100 mohm max. at both the positive and negative terminals when measured between the terminals of the PDI-2032 at 1 KHz with low drainage (100mA max.)  
Insulation resistance: 100 Mohm min. with 500 VDC applied between the positive and negative terminals.  
Dielectric withstanding voltage: 500 VDC applied for one minute between the positive and negative terminals.

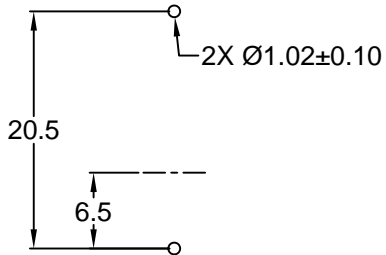
MECHANICAL SPECIFICATIONS

Battery insertion force: 0.3kg-1.0kg for the initial battery insertion  
Spring pressure: 50g min. initial contact force at positive and negative terminals  
Terminal strength: Electrical and mechanical performance specifications should still be satisfied without terminal cracking or excessive play, with a static load of 1kg applied to the terminals in any direction; however, the terminals may bend.

NOTES:

(1) 2032 size battery fits loosely into MPD socket P/N BH906 with 3mm (.118") diametrical clearance.

**RoHS COMPLIANT**



RECOMMENDED PCB LAYOUT TOP VIEW

PART NUMBER	POSITIVE CONTACT MATERIAL	PLATING
PDI-2032-0	BERYLLIUM COPPER	NICKEL
PDI-2032-1	PHOSPHOR BRONZE	NICKEL
PDI-2032-2	BERYLLIUM COPPER	NICKEL

REV	DATE	CHANGE	CHNG CHECK APPR	
			TD	PB
A	7/10/03	ADD 27.3 DIM		
B	10/26/09	ADD 7.4 DIM.		

TABLE 3: BATTERY HOLDER SELECTION GUIDE

PART NUMBER	GE SANYO VARTA	UNION CARBIDE (EVEREADY)	PANASONIC RAYOVAC	SAFT	DURACELL
PDI-2032-0	CR 2032	CR 2032	BR 2032 CR 2032		DL 2032
PDI-2032-1	CR 2025	CR 2025	CR 2025		DL 2025
PDI-2032-2	CR 2016	CR 2016	BR 2016 BR 2020 CR 2016	LM 2020	DL 2016

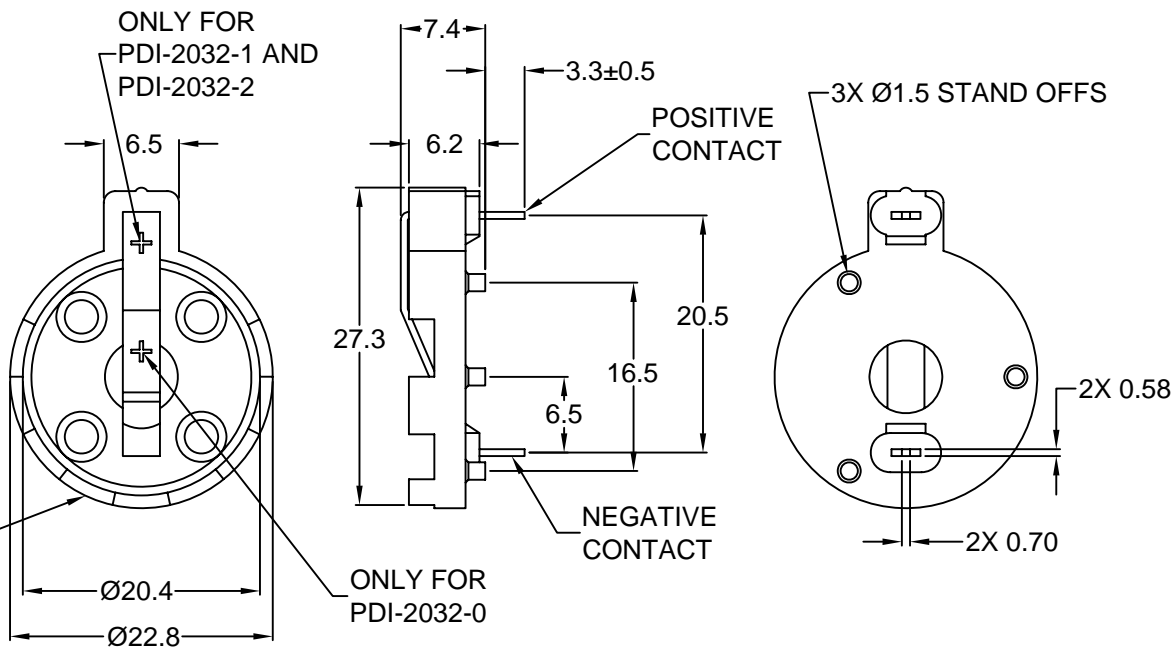


TABLE 2: CROSS REFERENCE CHART

PDI PART NUMBER	NOMINAL BATTERY SIZE	MEMORY PROTECTION DEVICES(MPD)	SAFT	KEYSTONE	S.E.I.
PDI-2032-0	(2032) 20.0 x 3.2	BH 906 <sup>(1)</sup>	N/A	106	2S2032-0

TOLERANCE UNLESS OTHERWISE SPECIFIED  
X ± 1  
X.X ± 0.4  
X.XX ± 0.20

DRAWN BY	GQ	DATE:	03/20/02
CHECK BY	TD	DATE:	05/08/02
APPR BY	PB	DATE:	05/08/02

**Power Dynamics, Inc.**  
Phone: 973 560-0019 Whippany, New Jersey Fax: 973 560-0076

PART: COIN CELL  
BATTERY HOLDER

<b>PDI-2032-X</b>		SHEET 1 of 1
PART #:		
SIZE: A	ALL DIMENSIONS FOR REFERENCE ONLY DIMENSIONS ARE IN MILLIMETERS	REV: B
SCALE: NTS		