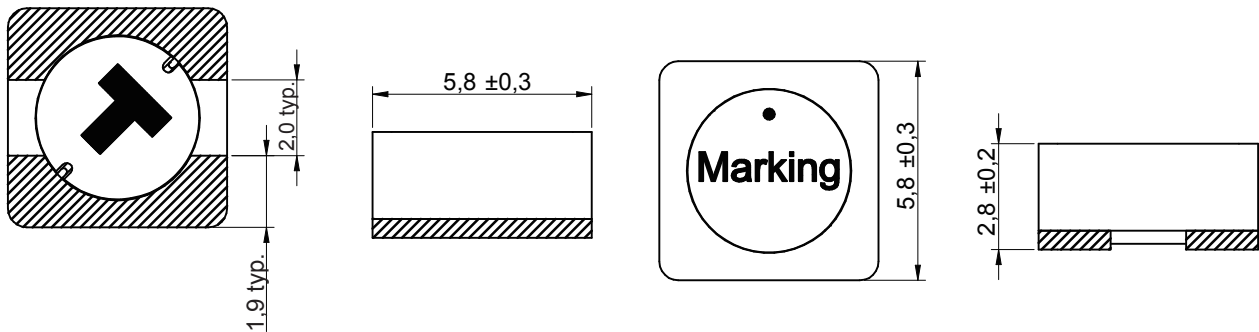
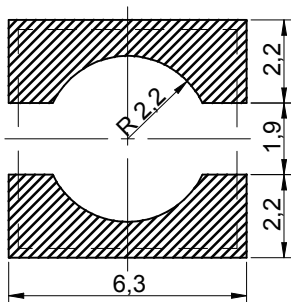


Dimensions: [mm]



Recommended Land Pattern: [mm]

Schematic:




Electrical Properties:

Properties	L (μ H)	I_R (A)	I_{sat} (A)	R_{DC} (m Ω)
Value	10	1.5	1.4	70
Tolerance	$\pm 30\%$	max.	typ.	max.
Test Condition	100KHz/100mV	$\Delta T=30K$	$ \Delta L/L < 35\%$	@20°C

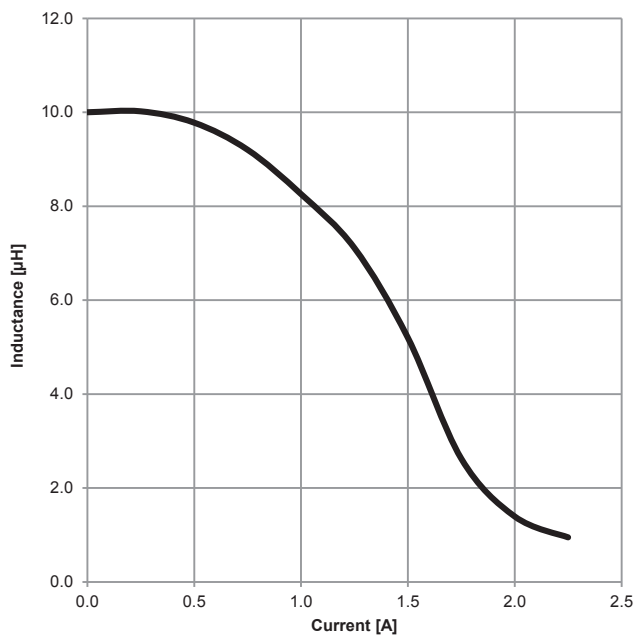
General Information:


It is recommended that the temperature of the component does not exceed +125°C
 Test conditions of Electrical Properties: 20°C, 33%RH
 Operating Temperature: -40°C to +125°C
 Storage Temperature(in original packaging): -20°C to +40°C; 75% RH max.

				UNIT: MM	 KOHER (Shanghai) Electronic Co.,Ltd
				SCALE:	
				SHEET: 1/2	
				APPROVAL: WSD	
				SIZE:	DESCRIPTION: SMD Shielded Tiny Power Inductor
A	26-APR-18	PDF	XL	PACKING UNIT: 400 pcs	PART NO: TSDR5828-100N
REV	DATE	FILE	BY		

Typical Electrical Characteristics:

Inductance VS. DC Current Characteristics:



				UNIT: MM	 KOHER (Shanghai) Electronic Co.,Ltd
				SCALE:	
				SHEET: 2/2	
				APPROVAL: WSD	
				SIZE:	DESCRIPTION: SMD Shielded Tiny Power Inductor
A	26-APR-18	PDF	XL	PACKING UNIT: 400 pcs	PART NO: TSDR5828-100N
REV	DATE	FILE	BY		