



Part Number : [2130321032](#)

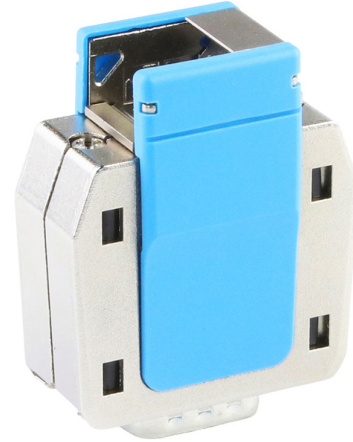
Product Description : FCT Jewel Metal Backshell for D-Sub Connector, Shell Size 1, Straight to 45° Angle Cable Outlet, with Cable Clamp and #4-40 Locking Screws, Blue

Series Number : 213032

Status : New Business Not Supported

Product Category : D-Sub Backshells


Engineering Number : 2130321032-FCT



Documents & Resources

Product Environment Compliance

Compliance

GADSL/IMDS	Not Relevant
China RoHS	
EU ELV	Not Relevant
Low-Halogen Status	Not Reviewed per IEC 61249-2-21
REACH SVHC	Not Contained per D(2022)4187-DC (10 June 2022)
EU RoHS	Compliant per EU 2015/863

Multiple Part Product Compliance Statements

- Eu RoHS
- REACH SVHC
- Low-Halogen

Multiple Part Industry Compliance Documents

- IPC 1752A Class C
- IPC 1752A Class D
- Molex Product Compliance Declaration
- IEC-62474
- chemSHERPA (xml)

EU RoHS Certificate of Compliance

Part Details

General

Status	New Business Not Supported
Category	D-Sub Backshells
Series	213032
Description	FCT Jewel Metal Backshell for D-Sub Connector, Shell Size 1, Straight to 45° Angle Cable Outlet, with Cable Clamp and #4-40 Locking Screws, Blue
Magnetic	Yes
Product Family	FCT D-Sub Connectors
Product Name	FCT Products
Type	Rugged Metal
UPC	195842781870

Electrical

Shield Type	Solid Metal
Shielded	Yes

Physical

Cable Diameter	3.00-9.50mm
Color - Resin	Blue
Material - Backshell	Zinc Die-cast
Material - Screw	Steel
Mounting Style	Locking Screw
Orientation	Straight to 45°
Packaging Type	Tray
Plating - Backshell	None
Temperature Range - Operating	-35° to +100°C
Thread Size	4-40 UNC
Thread Type	Standard
Waterproof / Dustproof	Yes
Waterproof / Dustproof Type	IP20

This document was generated on Sep 19, 2024