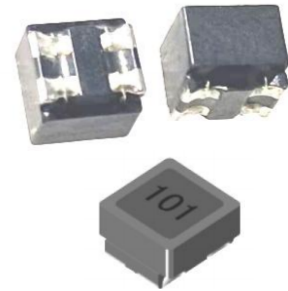


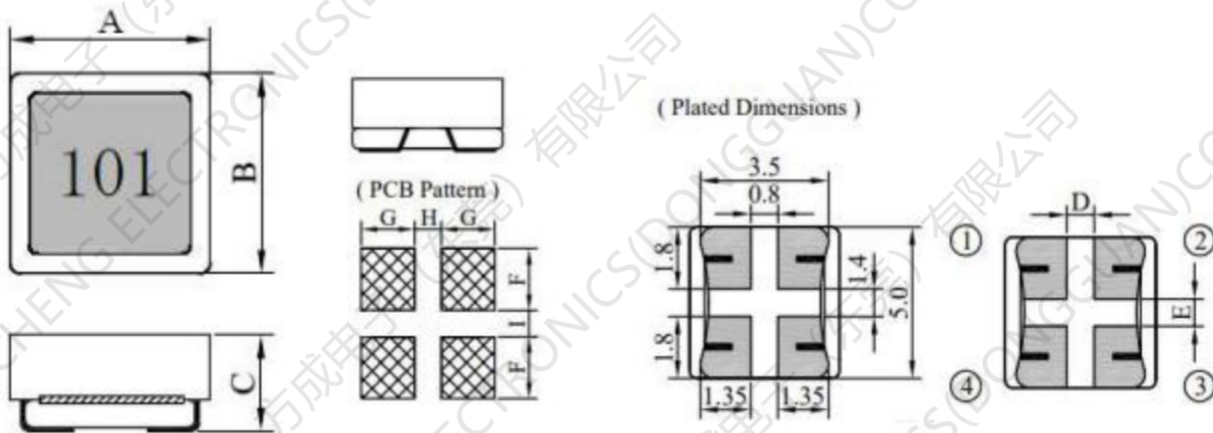
## SMD Common Mode Line Filter

### FC-SLF0502 –Series

Small size  
 Insulation Resistance  $10M\Omega$  min  
 Frequency Range: 100 kHz, 0.1 Vrms  
 Low Primary DCR version  
 Ambient temperature  $-40^{\circ}C$  to  $+85^{\circ}C$   
 Storage temperature Component:  $-40^{\circ}C$  to  $+125^{\circ}C$

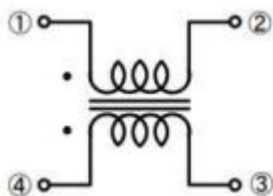


### 1. Dimensions:mm

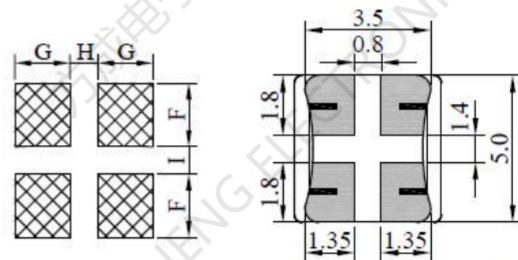


A	B	C	D	E	F	G	H	I
5.00 ±0.3	5.00 ±0.3	2.50 max.	0.80 typ.	1.00 typ.	2.30 typ.	1.60 ref.	0.80 ref.	1.00 ref.

### 2.Schematic:



### 3. LAYOUT RECOMMENDATION



Unit : mm

**FC-SLF0502 –Series -SMD Common Mode Line Filter**

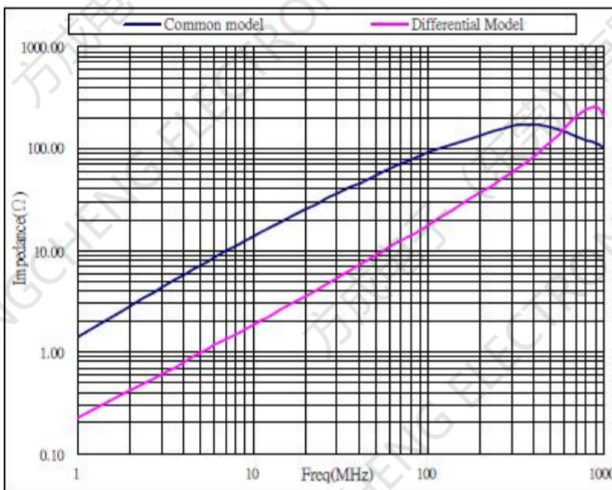
**4. ELECTRIC CHARACTERISTICS**

Number Part	Inductance (uH)	Common mo deimpedance (at 100MHz)	IDC (A)	RDC (mΩ)	Z / Max (KΩ)	Freq.range (MHz)
FC-SLF0502101YL	0.23	0.10 ±35%	6.0	15.0	0.06	90
FC-SLF0502251YL	0.55	0.25 ±35%	5.0	20.0	0.12	80
FC-SLF0502501YL	1.10	0.50 ±35%	4.0	30.0	0.20	60
FC-SLF0502102YL	2.50	1.00 ±35%	2.0	45.0	0.40	50
FC-SLF0502142YL	2.60	1.40 ±35%	1.5	55.0	0.45	40

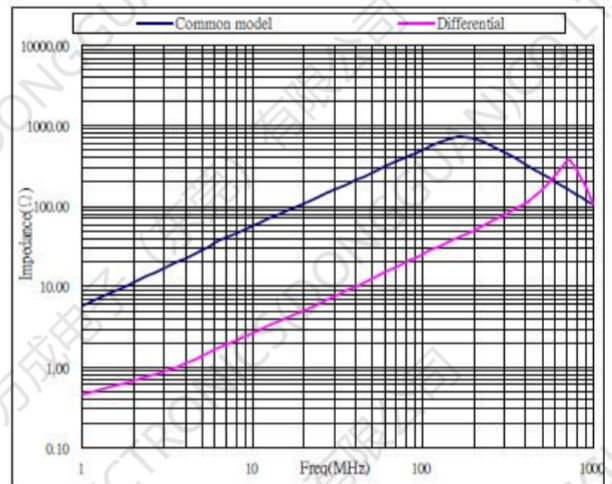
Inductance Test Condition.: 100kHz / 0.1V, Rated voltage 50 Vdc ; Withstand Voltage 125Vdc

Insulation Resistance 10MΩ min. IDC base on Temp. rise 40°C typ.

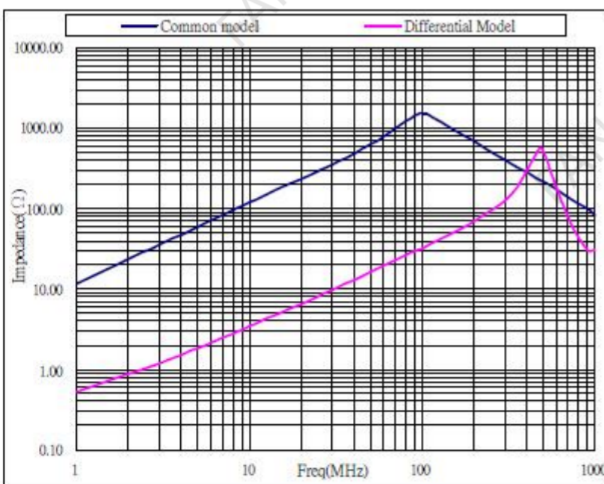
**5. Typical Impedance Characteristics:**



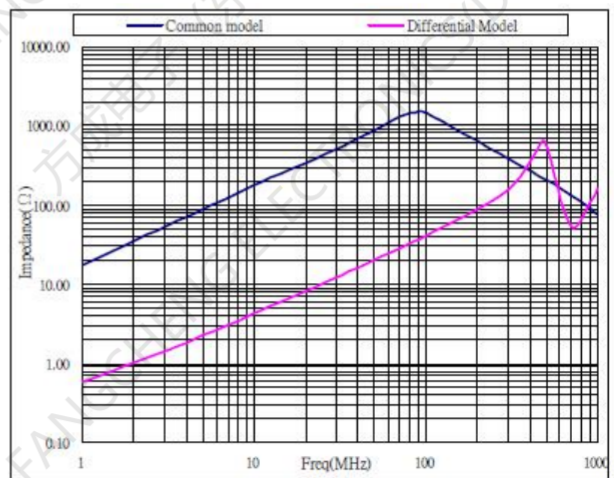
FC-SLF0502-101YL



FC-SLF0502-501YL



FC-SLF0502-102YL



FC-SLF0502-142YL