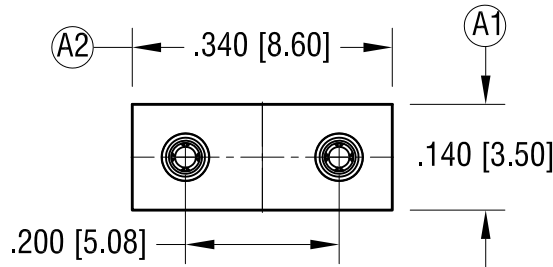
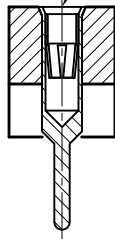


THIS DOCUMENT IS THE PROPERTY OF  
KEYSTONE ELECTRONICS CORP. AND  
SHALL NOT BE REPRODUCED, DISTRIBUTED  
OR USED AS A BASIS FOR MANUFACTURE  
WITHOUT PRIOR WRITTEN PERMISSION  
FROM KEYSTONE ELECTRONICS CORP.

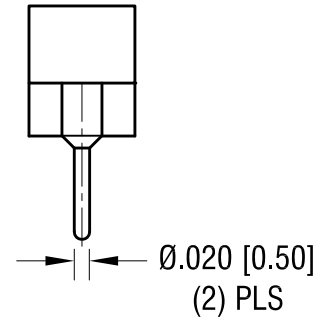
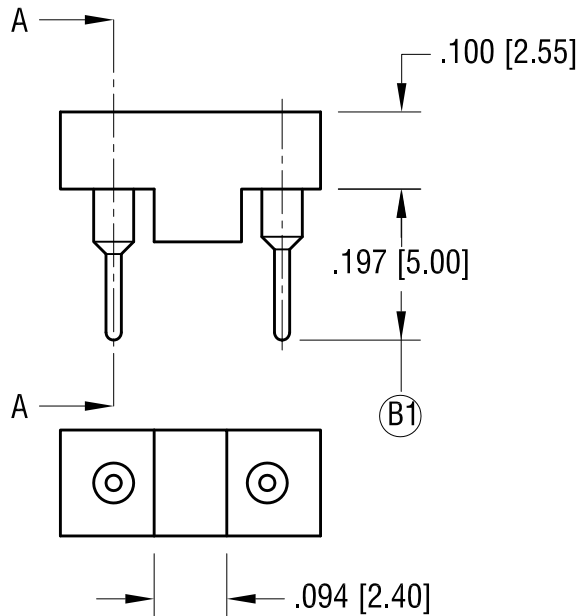
ACTUAL SIZE



ACCEPTS .020 [0.50]  
DIA. PIN



SECTION A-A



NOTES:

1. INSULATOR:  
MAT'L - THERMOPLASTIC, UL94 V-0
2. CONTACT PIN:  
MAT'L - BRASS  
FINISH - TIN PLATE
3. CONTACT SPRING:  
MAT'L - BERYLLIUM COPPER  
FINISH - GOLD PLATE

5.26.23	ADD (B1) CHANGE AS PER ECN 23-085	B
11.04.14	(A1) WAS .100, (A2) WAS .300 CHANGE AS PER ECN 14-114	A
DATE	DESCRIPTION	REV.

<b>KEYSTONE ELECTRONICS CORP.</b>			
www.keyelco.com • NEW HYDE PARK NY 11040 • Tel (516)328-7500			
PART NAME		SUBMINIATURE FUSE HGOLDER	
MATERIAL		AS NOTED	
FINISH		DRN BY	DATE
AS NOTED		BOONE	6.20.06
		APP'D	SCALE
		<b>MR</b>	4X
TOLERANCES	INCH [MM]	CODE	DWG NO.
DECIMAL	± .005 [± 0.13]	C	<b>3552</b>
ANGULAR	± 1°		
UNLESS OTHERWISE SPECIFIED			