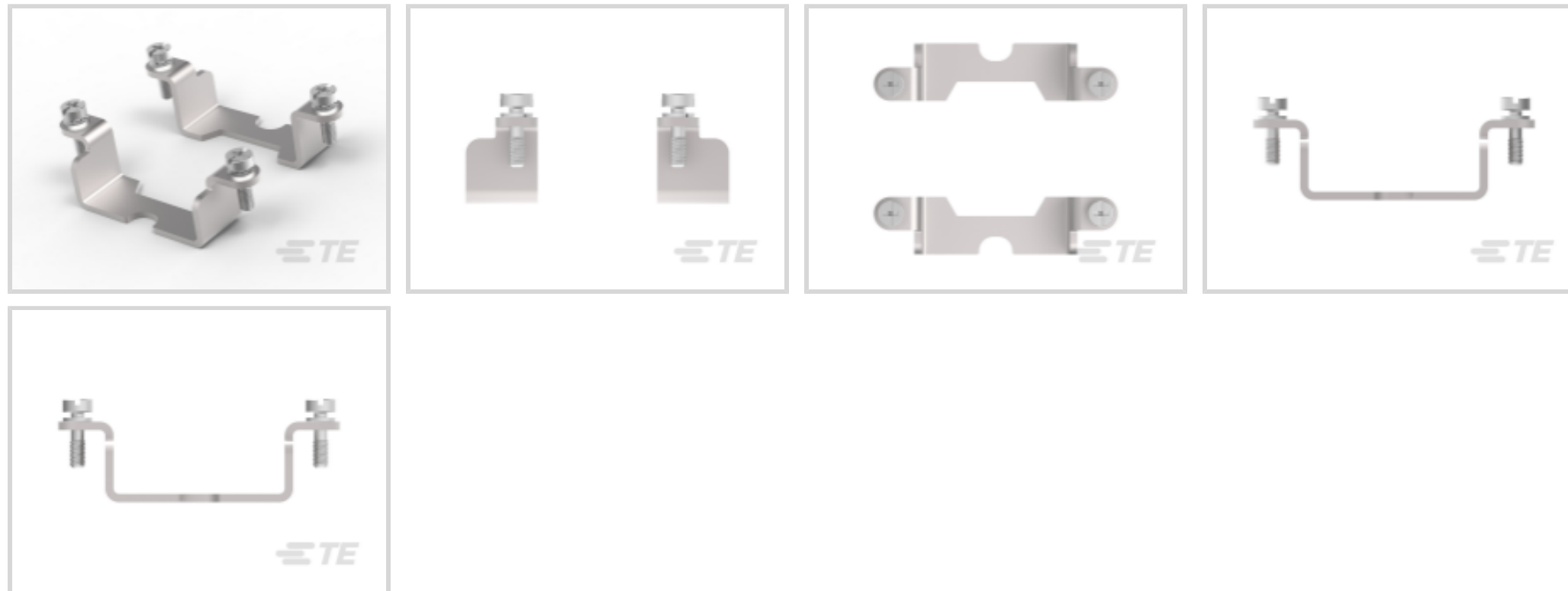




Connectors > Connector Accessories > Connector Hardware



Hardware Accessory Function: **Mounting**

Connector Hardware Accessory Type: **Frame**

## Features

### Product Type Features

Hardware Accessory Function	Mounting
Connector Hardware Accessory Type	Frame

## Product Compliance

[For compliance documentation, visit the product page on TE.com>](#)

EU RoHS Directive 2011/65/EU	Compliant
EU ELV Directive 2000/53/EC	Compliant
China RoHS 2 Directive MIIT Order No 32, 2016	No Restricted Materials Above Threshold
EU REACH Regulation (EC) No. 1907/2006	Current ECHA Candidate List: JUNE 2024 (241) Candidate List Declared Against: JUNE 2024 (241) Does not contain REACH SVHC
Halogen Content	Low Halogen - Br, Cl, F, I < 900 ppm per homogenous material. Also BFR/CFR/PVC Free
Solder Process Capability	Not reviewed for solder process capability

### Product Compliance Disclaimer

This information is provided based on reasonable inquiry of our suppliers and represents our current actual knowledge based on the information they provided. This information is subject to change. The part numbers that TE has identified as EU RoHS compliant have a maximum concentration of 0.1% by weight in homogenous materials for lead, hexavalent

chromium, mercury, PBB, PBDE, DBP, BBP, DEHP, DIBP, and 0.01% for cadmium, or qualify for an exemption to these limits as defined in the Annexes of Directive 2011/65/EU (RoHS2). Finished electrical and electronic equipment products will be CE marked as required by Directive 2011/65/EU. Components may not be CE marked. Additionally, the part numbers that TE has identified as EU ELV compliant have a maximum concentration of 0.1% by weight in homogenous materials for lead, hexavalent chromium, and mercury, and 0.01% for cadmium, or qualify for an exemption to these limits as defined in the Annexes of Directive 2000/53/EC (ELV). Regarding the REACH Regulation, the information TE provides on SVHC in articles for this part number is based on the latest European Chemicals Agency (ECHA) 'Guidance on requirements for substances in articles' posted at this URL: <https://echa.europa.eu/guidance-documents/guidance-on-reach>

## Compatible Parts



TE Part # T2193503101-000  
HCM350-MC



TE Part # T2193503201-000  
HCM350-FC

## Customers Also Bought



TE Part # T1920060125-009  
H6BPR-TGH-M25-EMC-C



TE Part # T1930060000-009  
H6BPR-AG-EMC-C



TE Part # T2019092101-000  
HQ-008-M



TE Part # T2051283101-000  
HEEE-064-M 65-128



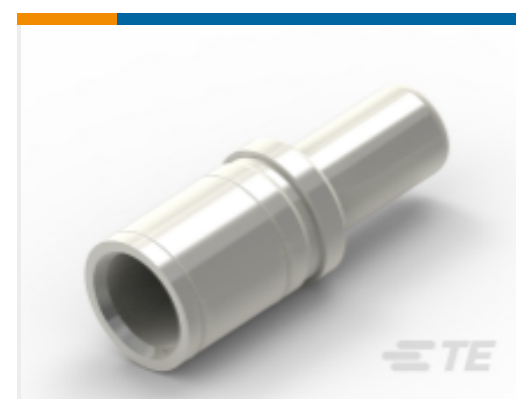
TE Part # T2051283201-000  
HEEE-064-F 65-128



TE Part # 647344-5  
05P SL156 HSG W/RP TB BLK #3



TE Part # T0924027845-000  
H16BPR-2P-350-FRAME



TE Part # T2193501120-000  
HCM350-MC-120

## Documents

### Product Drawings

[H6BPR-1P-350-FRAME](#)

English

### CAD Files

[3D PDF](#)

[3D](#)

[Customer View Model](#)



[ENG\\_CVM\\_CVM\\_T0924015115-000\\_A.2d\\_dxf.zip](#)

English

**Customer View Model**

[ENG\\_CVM\\_CVM\\_T0924015115-000\\_A.3d\\_igs.zip](#)

English

**Customer View Model**

[ENG\\_CVM\\_CVM\\_T0924015115-000\\_A.3d\\_stp.zip](#)

English

By downloading the CAD file I accept and agree to the [Terms and Conditions](#) of use.

---

## Datasheets & Catalog Pages

**HEAVY DUTY CONNECTORS**

English

**HEAVY DUTY CONNECTORS**

Japanese

**Heavy Duty Connectors - HCM/IP68 Hoods/Housing Series**

English

---

## Product Specifications

**Application Specification**

English