

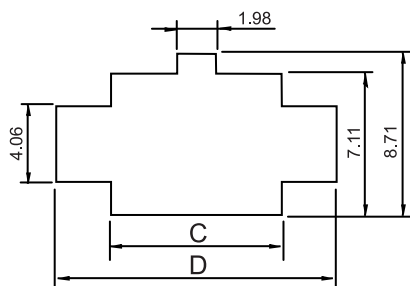
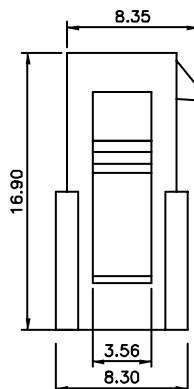
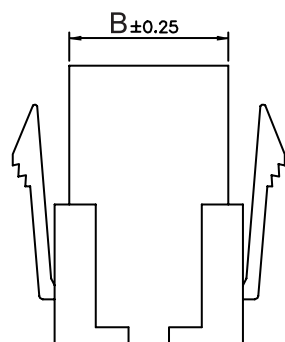
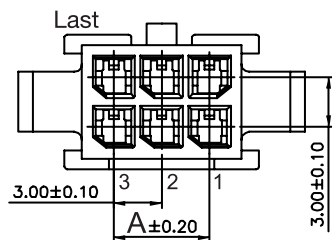
1

2

3

4

5



PANEL OPENING
Recommended Thickness 1.5mm

TECHNICAL CHARACTERISTICS

MATERIAL

INSULATOR: NYLON 6T
FLAMABILITY RATING: UL94-V0
COLOR: BLACK
PITCH: 3.00MM

ENVIRONMENTAL

OPERATING TEMPERATURE: -25 UP TO 105°C
COMPLIANCE: LEAD FREE AND ROHS

ELECTRICAL

CURRENT RATING: 5A
WORKING VOLTAGE: 250V AC
INSULATOR RESISTANCE: >1000 MOHM
DIELECTRIC WITHSTANDING VOLTAGE: 1500V AC/MN

PACKAGING

BAG

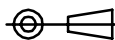
DIMENSION

PINS	A	B	C	D
2	-	3.85	4.21	7.90
4	3.00	6.85	7.21	10.90
6	6.00	9.85	10.21	13.89
8	9.00	12.85	13.21	16.89
10	12.00	15.85	16.21	19.89
12	15.00	18.85	19.21	22.89
14	18.00	21.85	22.20	25.88
16	21.00	24.85	25.20	28.88
18	24.00	27.85	28.20	31.88
20	27.00	30.85	31.22	34.87
22	30.00	33.85	34.22	37.87
24	33.00	36.85	37.22	40.87

RoHS Compliant

REV	DATE	FILE	BY
G	23-AVR-09	PACKAGING	JC
F	17-NOV-08	PINNING	JP
E	04-DEC-07	MODIFICATIONS	EC
D	27-FEB-07	UPDATE	EC
C	25-JAN-07	DRAW	EC
B	30-JUN-05		JP
A	18-JUN-04	PDF	JP

PROJECTION:



APPROVAL: RJ

GENERAL TOLERANCE

.X = +/- 0.2

.XX = +/- 0.15



UNIT: MM

SCALE:

SHEET: 1/2

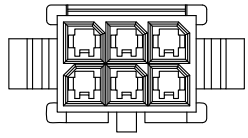
DRAW: PEARL

DESCRIPTION: 3.00MM MALE DUAL ROW PLUG WITH MOUNTING EARS

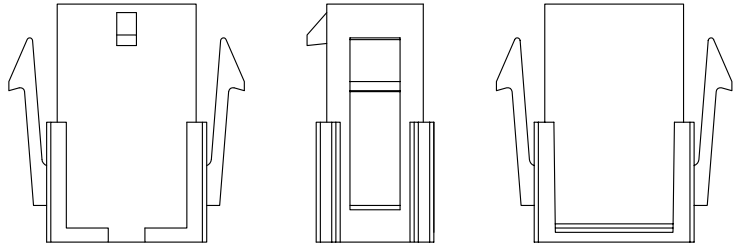
WERI PART NO: 6620 xx 21822

SIZE

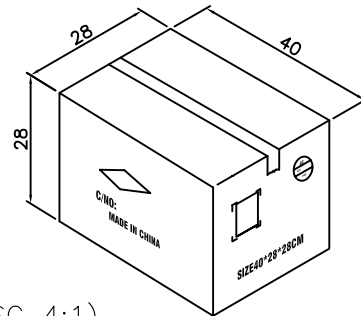
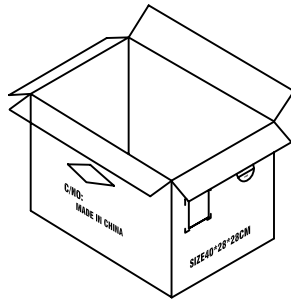
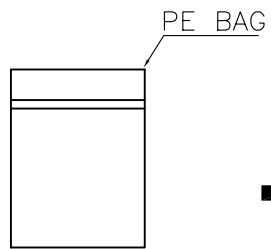
A4



Note:
 1.Dimension:
 Carton Size:40*28*28(cm)
 2.Quantity:

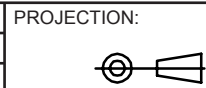


Pin.	Pcs/Bag	Pcs/Carton	Pin.	Pcs/Bag	Pcs/Carton
2	1000	16000	14	500	5000
4	1000	16000	16	500	4000
6	1000	12000	18	500	4000
8	1000	10000	20	500	2000
10	500	8000	22	500	2000
12	500	5000	24	500	2000



Carton (SC 4:1)

RoHS Compliant			
G			
F			
E			
D			
C			
B			
A			
REV	DATE	FILE	BY



APPROVAL: RJ

GENERAL TOLERANCE
 .X = +/- 0.2
 .XX = +/- 0.15

UNIT: MM
 SCALE:
 SHEET: 2/2
 DRAW: PEARL



DESCRIPTION: 3.00MM MALE DUAL ROW PLUG WITH MOUNTING EARS
 WERI PART NO: 6620 xx 21822_TPK

SIZE
A4