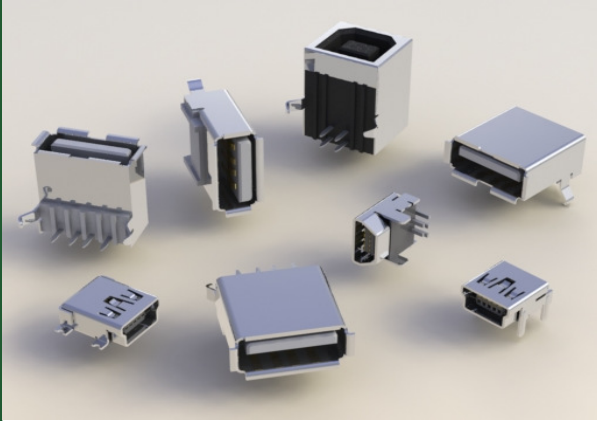




## USB CONNECTOR

### SERIES 690



Example Part Number: **690-004-220-013**

Series \_\_\_\_\_

Total Number of Contacts \_\_\_\_\_

Contact Plating Code \_\_\_\_\_

Contact Code \_\_\_\_\_

Material \_\_\_\_\_

Type Indicator \_\_\_\_\_

#### Series: 690

#### Total Number of Contacts:

004	Single Port position (Type A, Type B, Miniature USB-A)
005	Single Port position (Miniature USB-B, Miniature USB-AB)
006	Single Port (IEEE 1394)
007	Single Port (E-SATA)
008	Dual Ports (Type A)
009	Single Port - Standard USB 3.0 compliance (Type A, Type B)
010	Single Port -Micro USB 3.0 compliance (Type B)
012	Triple Ports (Type A)
016	Quadruple Ports (Type A)
018	Dual Ports -USB 3.0 compliance (Type A)
019	Single Port (HDMI)
020	Single Port (Mini Displayport)
023	Dual Ports Combo - (Type A and HDMI)
038	Dual Ports (HDMI)

#### Contact Plating Code:

2	Gold Flash Plating
3	15 µin Gold
6	30 µin Gold

#### Contact Code:

20	Right Angle PCB (.390" Footprint)
21	Right Angle PCB (.405" Footprint)
22	Right Angle PCB (.147" Footprint)
23	Right Angle PCB (.114" Footprint)
24	Vertical with Solder Pad, Thru Hole Type
60	Vertical PCB
61	Right Angle PCB (Upright), for Type A only
95	Right Angle, Surface Mount with Metal Mounting Angles
96	Right Angle, Surface Mount with Metal Post
97	Right Angle, Surface Mount with Plastic Post

#### Material:

0	Thermoplastic Black, UL 94V-0
1	PA9T Black
2	LCP White

#### Type Indicator:

13	Standard Type A
23	Standard Type B
43	Miniature USB Type B
53	Miniature USB Type AB
63	Miniature Display Port
73	E-SATA 7P Male
83	Micro USB-AB
84	Micro USB 3.0

#### FEATURES:

Up to 1.5 Mbps communication speed for standard USB 1.0  
 Up to 480 Mbps communication speed for standard USB 2.0  
 Up to 5 Gbps communication speed for standard USB 3.0

Readily available in:

- Single Port position (Type A, Type B, Miniature USB-A)
- Single Port position (Miniature USB-B, Miniature USB-AB)
- Single Port (IEEE 1394)
- Single Port (E-SATA)
- Dual Ports (Type A)
- Single Port - Standard USB 3.0 compliance (Type A, Type B)
- Single Port -Micro USB 3.0 compliance (Type B)
- Triple Ports (Type A)
- Quadruple Ports (Type A)
- Dual Ports -USB 3.0 compliance (Type A)
- Single Port (HDMI)
- Single Port (Mini Displayport)
- Dual Ports Combo - (Type A and HDMI)
- Dual Ports (HDMI)

Industry Standard Plug and play technology

Hot Pluggable

Compatible with asynchronous and isochronous data transfer methods

Consolidated current serial, parallel, keyboard mouse and game ports as well as, ISDN and PBX

#### SPECIFICATIONS:

Insulator Material: UL 94V-0 Thermoplastic, PA9T or LCP

Contact Material: Phosphor Bronze or Copper Alloy

Contact Plating: Gold Plating over Nickel Plating on mating area and

Tin Plating on tails

Shell Material: Brass with Tin Plating

#### ORDERING CODE NOTES:

All part numbers deriving from this ordering guide may not be readily available or could be available upon request. Please contact EDAC's customer service for more inquiries.

# Mouser Electronics

Authorized Distributor

Click to View Pricing, Inventory, Delivery & Lifecycle Information:

[EDAC:](#)

[690-004-621-023](#) [690-004-621-013](#) [690-008-621-013](#) [690-004-660-023](#) [690-004-660-013](#) [690-004-260-013](#) [690-004-221-013](#) [690-004-220-013](#)