

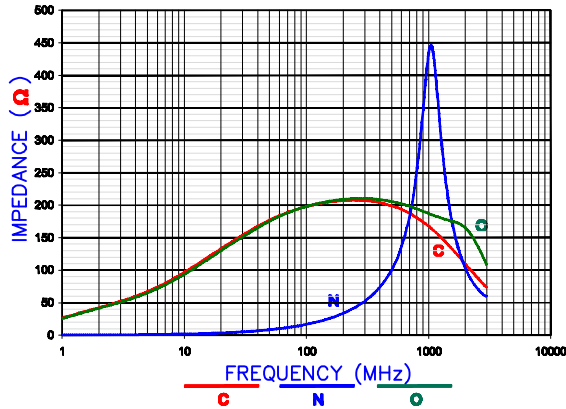
**PHYSICAL DIMENSIONS:**

A	12.57 [.495]	+ 0.20 [.008]
B	5.72 [.225]	+ 0.10 [.004]
B <sub>1</sub>	6.73 [.265]	MAX
C	9.53 [.375]	+ 0.15 [.006]
C <sub>1</sub>	10.31 [.406]	MAX.
D	2.41 [.095]	+ 0.08 [.003]
E	0.89 [.035]	+ 0.13 [.005]
E <sub>1</sub>	1.91 [.075]	+ 0.13 [.005]

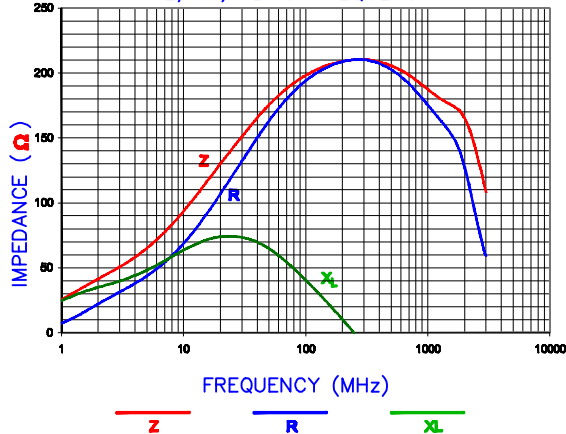
**WIRE:**

T <sub>1</sub>	1.91 [.075]	+ 0.25 [.010]
T <sub>2</sub>	0.38 [.015]	TYP.
T <sub>3</sub>	0.38 [.015]	TYP.

Z vs. FREQUENCY (C,O,N)

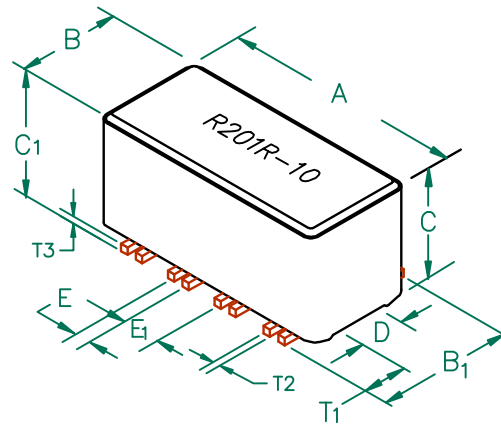


Z, R, XL vs. FREQUENCY



AGILENT E4991A RF Impedance/Material Analyzer  
HP 16194A Test Fixture. TEST REF. 3007

# CM5022R201R-10



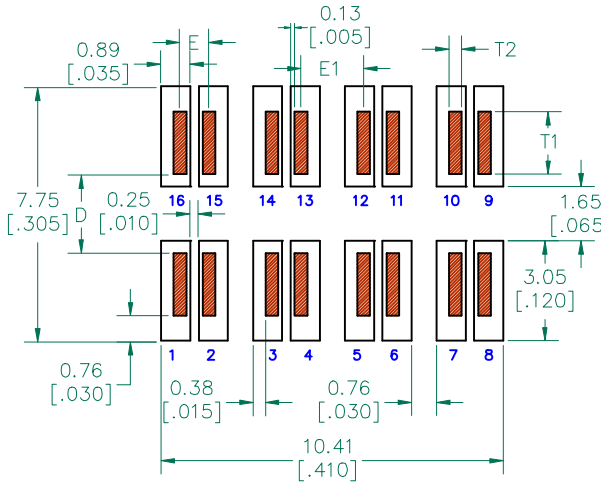
**ELECTRICAL CHARACTERISTICS:**

	Z @ 100MHz (Ω)	DCR (Ω)	Rated Current	Rated Voltage (VDC)
Nominal	200			
Minimum	160			
Maximum	-	0.02	5,000 mA	30

NOTES: UNLESS OTHERWISE SPECIFIED

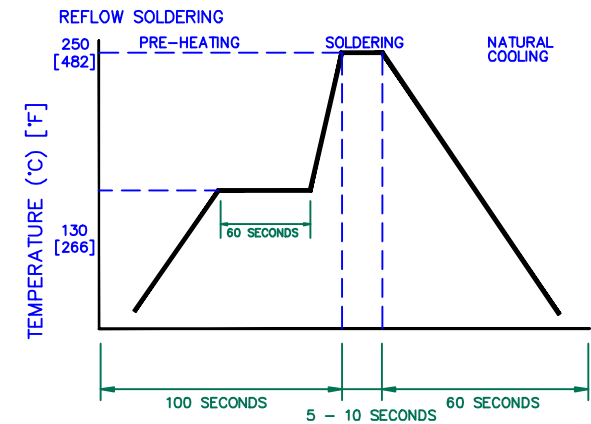
1. TAPED AND REELED per CURRENT EIA SPECIFICATIONS 13" REELS, 375 PCS PER REEL.
2. COMPONENTS SHOULD BE ADEQUATELY PREHEATED BEFORE SOLDERING.
3. REF. CARRIER TAPE SPECIFICATION # CART5022-2P.
4. TERMINATION FINISH IS 100% TIN.
5. THIS PART HAS NO PIN POLARITY.
6. OPERATION TEMPERATURE (INCLUDING SELF-HEATING): -40 ~ +125°C.

**LAND PATTERNS FOR REFLOW SOLDERING**

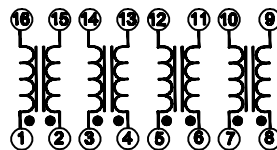


**UNCONTROLLED DOCUMENT**

**RECOMMENDED SOLDERING CONDITIONS**

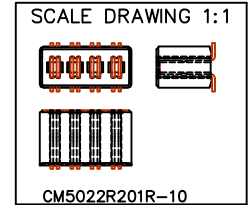
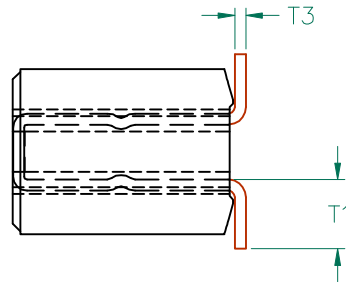
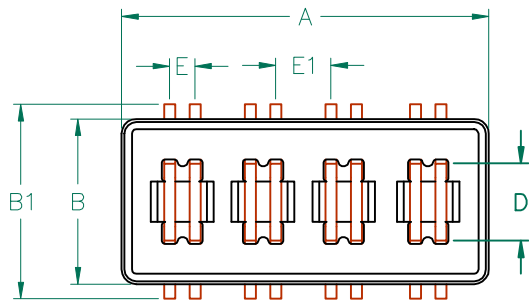


**EQUIVALENT CIRCUIT  
NO POLARITY**



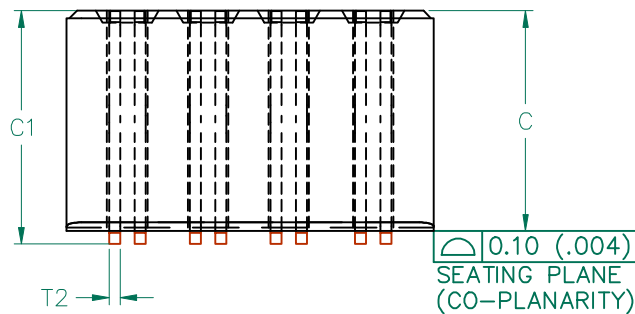
DIMENSIONS ARE IN mm (INCHES).

This print is the property of Laird Tech. and is loaned in confidence subject to return upon request and with the understanding that no copies shall be made without the written consent of Laird Tech. All rights to design or invention are reserved.				<b>Laird TECHNOLOGIES</b>	
PROJECT/PART NUMBER:	CM5022R201R-10		REV	D	PART TYPE: ASSEMBLY
DATE:	06/03/04	DATE:	12/17/07	SCALE:	NTS
DATE:	06/03/04	DATE:	02/03/09	SHEET:	2 of 3
DESCRIPTION:	CM5022R201R-10-D-2	INT			



**ELECTRICAL TESTING**

TEST:	GROSS	GROSS
	Z	Z
# TURNS	1	1
AWG	22	22
FREQUENCY	25 MHz	100 MHz
NOMINAL	145 Ω	200 Ω
MINIMUM	115 Ω	160 Ω
WEIGHT/1000	2.29 kgs.	5.05 lbs.



**UNCONTROLLED DOCUMENT**

**DIMENSIONS:**

A	12.57 [.495]	+ 0.20 [.008]
B	5.72 [.225]	+ 0.10 [.004]
B <sub>1</sub>	6.73 [.265]	MAX
C	9.53 [.375]	+ 0.15 [.006]
C <sub>1</sub>	10.31 [.406]	MAX.
D	2.41 [.095]	+ 0.08 [.003]
E	0.89 [.035]	+ 0.13 [.005]
E <sub>1</sub>	1.91 [.075]	+ 0.13 [.005]

**WIRE DIMENSIONS:**

T <sub>1</sub>	1.91 [.075]	+ 0.25 [.010]
T <sub>2</sub>	0.38 [.015]	TYP.
T <sub>3</sub>	0.38 [.015]	TYP.

NOTES: UNLESS OTHERWISE SPECIFIED

1. WIRE: REFERENCE STEWARD WIRE PURCHASE SPEC. W0022-\*1.
2. IMPEDANCE VALUES ARE GROSS, MEASURED USING W0022-\*1 WIRE PLACED AGAINST END OF SLOT w/ NO D.C. BIAS.
3. REFERENCE STEWARD CORE 24H0495-200.
4. NO MORE THAN 0.18 [.007] DIFFERENCE FROM THE LONGEST TO THE SHORTEST CONDUCTOR ON ONE SIDE.
5. TERMINATION FINISH IS 100% TIN.
6. THIS PART HAS NO PIN POLARITY.

DIMENSIONS ARE IN mm (INCHES).				This print is the property of Laird Tech. and is loaned in confidence subject to return upon request and with the understanding that no copies shall be made without the written consent of Laird Tech. All rights to design or invention are reserved.		<b>Laird TECHNOLOGIES</b>	
D	ADD RATED VOLTAGE AND NOTE 6	08/30/12	QIU	PROJECT/PART NUMBER:	REV	PART TYPE:	DRAWN BY:
C	UPDATE COMPANY LOGO ADD EQUIV.CIRC	02/03/09	JRK	CM5022R201R-10	D	ASSEMBLY	JRK
B	UPDATE COMPANY LOGO	12/17/07	JRK	DATE:	SCALE:	NTS	SHEET:
A	ORIGINAL DRAFT	06/03/04	JRK	06/03/04			
REV	DESCRIPTION	DATE	INT	CAD #	TOOL #		
				CM5022R201R-10-D-3	H0495-2		3 of 3