

Description

The XR46000 is a silicon N-channel enhanced power MOSFET. With low conduction loss, good switching performance and high avalanche energy, it is suitable for various power supply system, especially for AC step driving application for LED lighting.

The package type is SOT-223, which comply with the RoHS standard.

Key Parameters

V_{DSS}	600V
I_D	1.5A
$P_D (T_C = 25^\circ\text{C})$	20W
$R_{DS,ON,typ}$	7.0 Ω

FEATURES

- Fast switching
- ESD improved capability
- Low gate charge (Typ. 7.5nC)
- Low reverse transfer capacitance (Typ. 5.0pF)

APPLICATIONS

- LED lighting applications
 - Downlight
 - High bay
 - Specialty
 - Architectural

Equivalent Circuit

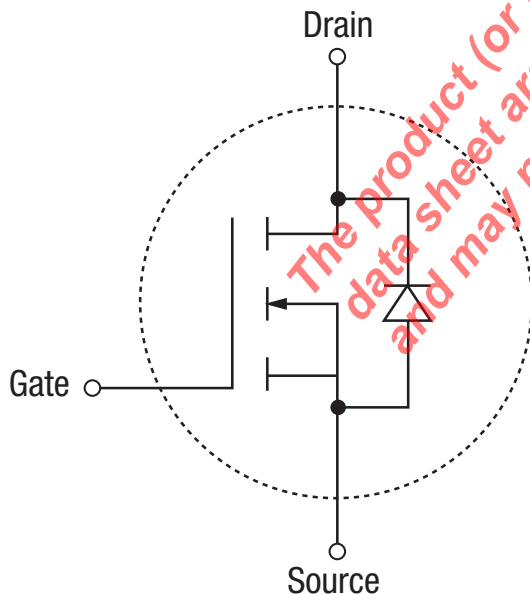
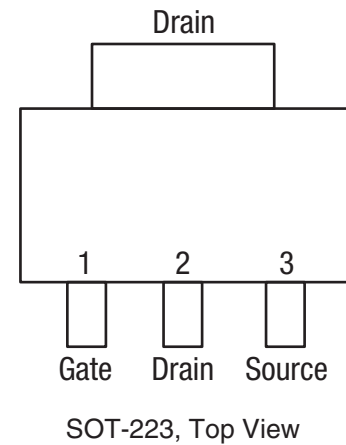


Figure 1. Equivalent Circuit

Pin Configuration



Absolute Maximum Ratings

Stresses beyond the limits listed below may cause permanent damage to the device. Exposure to any Absolute Maximum Rating condition for extended periods may affect device reliability and lifetime.

$T_C = 25^\circ\text{C}$ unless otherwise noted.

V_{DSS} drain-to-source voltage	600V
I_D continuous drain current ($T_C = 25^\circ\text{C}$)	1.5A
I_D continuous drain current ($T_C = 100^\circ\text{C}$)	0.85A
I_{DM} pulsed drain current	6A
V_{GS} gate-to-source voltage	$\pm 30\text{V}$
P_D power dissipation ($T_C = 25^\circ\text{C}$)	20W
P_D derating factor above 25°C	0.16W/ $^\circ\text{C}$
$T_{STORAGE}$ storage temperature range.....	-65°C to 150°C
E_{AS} single pulse avalanche energy	80mJ

NOTE:
Unless otherwise noted, all tests are pulsed tests at the specified temperature, therefore: $T_J = T_C = T_A$.

Operating Conditions

T_J operating junction temperature	150°C
T_A operating ambient temperature	-40°C to 85°C

The product (or products) mentioned in this data sheet are no longer being manufactured and may not be ordered (OBS)

Electrical Characteristics

$T_C = 25^\circ\text{C}$ unless otherwise noted.

Symbol	Parameter	Conditions	Min	Typ	Max	Units	
OFF Characteristic							
BV_{DSS}	Drain to source breakdown voltage	$V_{GS} = 0V, I_D = 250\mu A$	600			V	
$\Delta BV_{DSS}/\Delta T_J$	Breakdown voltage temperature coefficient	$I_D = 250\mu A$, reference 25°C		0.71		$V/^\circ\text{C}$	
I_{DSS}	Drain to source leakage current	$V_{DS} = 600V, V_{GS} = 0V, T_A = 25^\circ\text{C}$			25	μA	
		$V_{DS} = 600V, V_{GS} = 0V, T_A = 125^\circ\text{C}$			250		
$I_{GSS(F)}$	Gate to source forward leakage	$V_{GS} = 30V$			12	μA	
$I_{GSS(R)}$	Gate to source reverse leakage	$V_{GS} = -28V$			-12		
ON Characteristic (pulse width $t_p \leq 380\mu s$, $\delta \leq 2\%$)							
$R_{DS(ON)}$	Drain to source on-resistance	$V_{GS} = 10V, I_D = 0.75A$		7.0	8.0	Ω	
$V_{GS(TH)}$	Gate threshold voltage	$V_{DS} = V_{GS}, I_D = 250\mu A$	2.0		4.0	V	
Dynamic Characteristic							
g_{fs}	Forward transconductance	$V_{DS} = 15V, I_D = 0.75A$		1.0		S	
C_{iss}	Input capacitance	$V_{GS} = 0V, V_{DS} = 25V, f = 1\text{MHz}$		170		pF	
C_{oss}	Output capacitance			27			
C_{rss}	Reverse transfer capacitance			5			
Resistive Switching Characteristic							
$t_{d(ON)}$	Turn-on delay time	$I_D = 1.5A, V_{DD} = 300V, V_{GS} = 10V, R_G = 4.7\Omega$		8		ns	
t_r	Rise time			30			
$t_{d(OFF)}$	Turn-off delay time			22			
t_f	Fall time			55			
Q_g	Total gate charge	$I_D = 1.5A, V_{DD} = 480V, V_{GS} = 10V$		7.5		nC	
Q_{gs}	Gate to source charge			1.7			
Q_{gd}	Gate to drain "Miller" charge			4.0			
Source-Drain Diode Characteristics (pulse width $t_p \leq 380\mu s$, $\delta \leq 2\%$)							
I_S	Continuous source current (body diode)				1.5	A	
I_{SM}	Maximum source current (body diode)				6.0		
V_{SD}	Diode forward voltage	$I_S = 1.5A, V_{GS} = 0V$			1.5	V	
T_{rr}	Reverse recovery time	$I_D = 1.5A, T_J = 25^\circ\text{C}, dI_F/dt = 100A/\mu s, V_{GS} = 0V$		530		ns	
Q_{rr}	Reverse recovery charge				1100		nC
I_{RRM}	Reverse recovery current				4.4		A

Typical Performance Characteristics

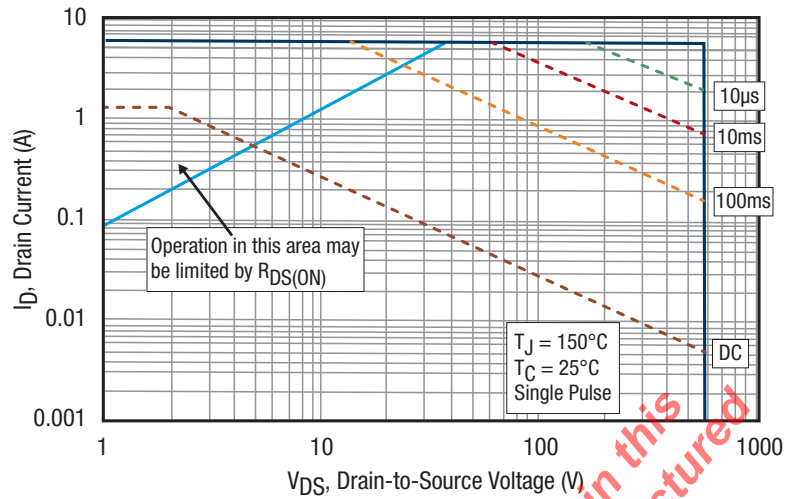


Figure 2. Safe Operating Area

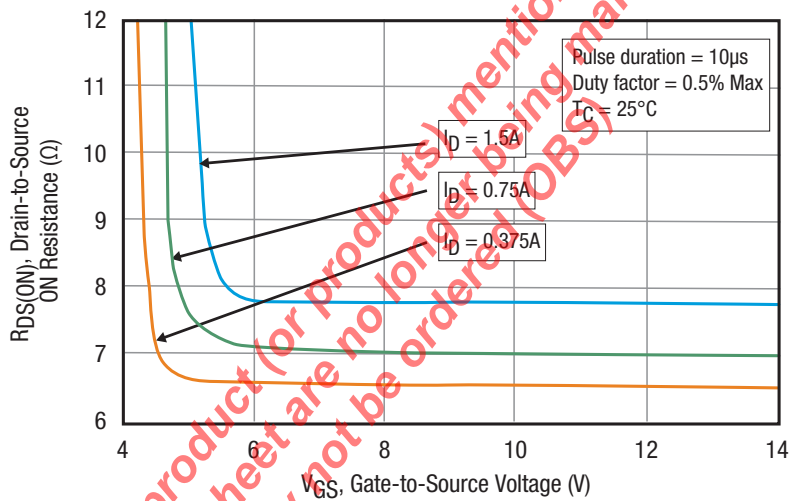


Figure 3. Typical Drain-to-Source ON Resistance vs. Gate Voltage and Drain Current

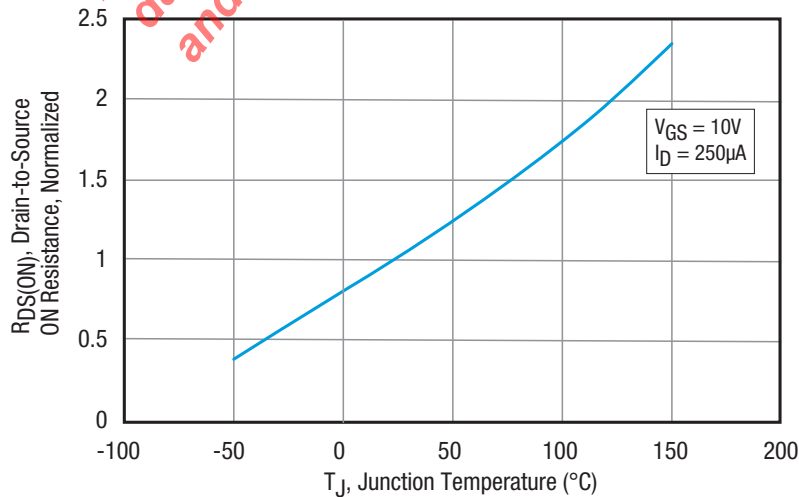
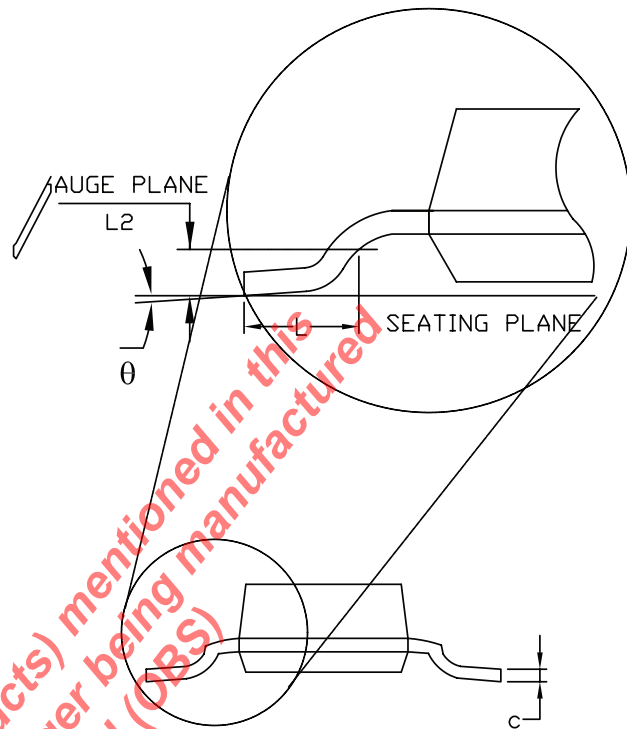
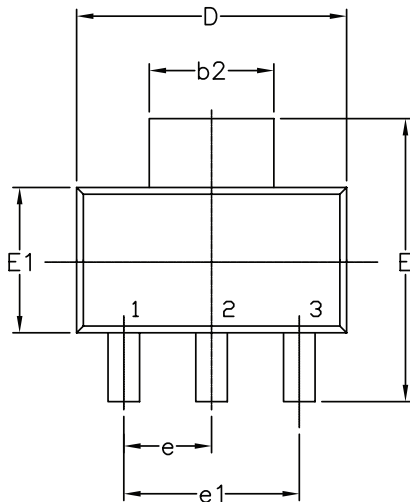


Figure 4. Typical Drain-to-Source ON Resistance vs. Junction Temperature

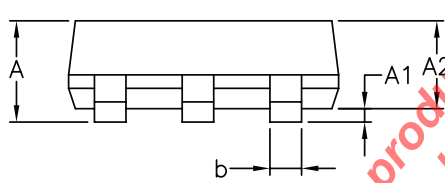
Package Description

Top View



Front View

Side View



The product (or products) mentioned in this data sheet are no longer being manufactured (JBS) and may not be ordered.

3 Pin SOT-223 JEDEC TO-261 Variation AA						
SYMBOLS	DIMENSIONS IN MM (Control Unit)			DIMENSIONS IN INCH (Reference Unit)		
	MIN	NOM	MAX	MIN	NOM	MAX
A	—	—	1.80	—	—	0.071
A1	0.02	—	0.10	0.001	—	0.004
A2	1.50	1.60	1.70	0.060	0.063	0.067
b	0.66	0.76	0.84	0.026	0.030	0.033
b2	2.90	3.00	3.10	0.114	0.118	0.122
c	0.23	0.30	0.35	0.010	0.012	0.014
D	6.30	6.50	6.70	0.248	0.256	0.264
E	6.70	7.00	7.30	0.264	0.276	0.287
E1	3.30	3.50	3.70	0.130	0.138	0.146
e	2.30 BSC			0.091 BSC		
e1	4.60 BSC			0.182 BSC		
L	0.75	—	—	0.030	—	—
L2	0.25 BSC			0.010 BSC		
θ	0°	—	10°	0°	—	10°
N	3			3		

Ordering Information⁽¹⁾

Part Number	Operating Temperature Range	Package	Packaging Method	Lead Free ⁽²⁾
XR46000ESETR	-40°C ≤ T _J ≤ 150°C	SOT-223	Tape and reel	Yes

NOTES:

1. Refer to www.maxlinear.com/XR46000 for most up-to-date Ordering Information.
2. Visit www.maxlinear.com for additional information on Environmental Rating.

Revision History

Revision	Date	Description
1A	Aug 2016	Initial release
1B	Nov 2019	Updated to MaxLinear logo. Updated Ordering Information.



5966 La Place Court
 Suite 100
 Carlsbad, CA 92008
 Tel.: +1 (760) 692-0711
 Fax: +1 (760) 444-8598
www.maxlinear.com

The product (or products) mentioned in this data sheet are no longer being manufactured and may not be ordered (OBS)

The content of this document is furnished for informational use only, is subject to change without notice, and should not be construed as a commitment by MaxLinear, Inc. MaxLinear, Inc. assumes no responsibility or liability for any errors or inaccuracies that may appear in the informational content contained in this guide. Complying with all applicable copyright laws is the responsibility of the user. Without limiting the rights under copyright, no part of this document may be reproduced into, stored in, or introduced into a retrieval system, or transmitted in any form or by any means (electronic, mechanical, photocopying, recording, or otherwise), or for any purpose, without the express written permission of MaxLinear, Inc.

MaxLinear, Inc. does not recommend the use of any of its products in life support applications where the failure or malfunction of the product can reasonably be expected to cause failure of the life support system or to significantly affect its safety or effectiveness. Products are not authorized for use in such applications unless MaxLinear, Inc. receives, in writing, assurances to its satisfaction that: (a) the risk of injury or damage has been minimized; (b) the user assumes all such risks; (c) potential liability of MaxLinear, Inc. is adequately protected under the circumstances.

MaxLinear, Inc. may have patents, patent applications, trademarks, copyrights, or other intellectual property rights covering subject matter in this document. Except as expressly provided in any written license agreement from MaxLinear, Inc., the furnishing of this document does not give you any license to these patents, trademarks, copyrights, or other intellectual property.

MaxLinear, the MaxLinear logo, and any MaxLinear trademarks, MxL, Full-Spectrum Capture, FSC, G.now, AirPHY and the MaxLinear logo are all on the products sold, are all trademarks of MaxLinear, Inc. or one of MaxLinear's subsidiaries in the U.S.A. and other countries. All rights reserved. Other company trademarks and product names appearing herein are the property of their respective owners.

© 2016 - 2019 MaxLinear, Inc. All rights reserved.