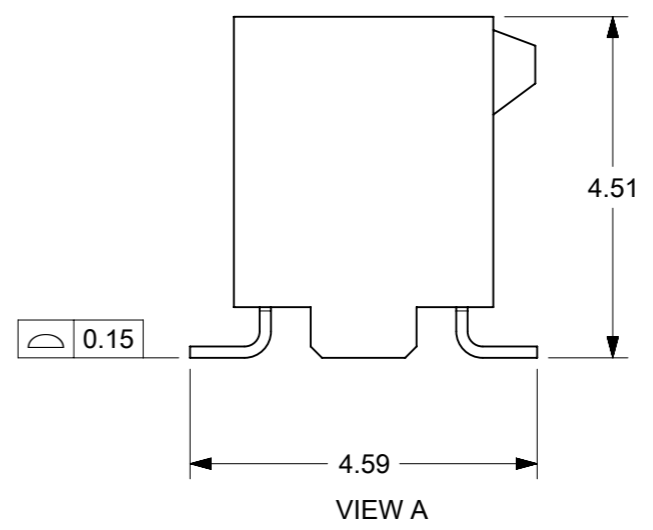


1. MATERIAL:
HOUSING: LIQUID CRYSTALLINE POLYMER, GLASS FILLED, UL94V-0, BLACK
TERMINAL: HIGH PERFORMANCE COPPER ALLOY
FINISHES: SEE PART NUMBER LEGEND IN SHEET 2
2. PRODUCT SPECIFICATION: 781200001_PS
3. PACKAGING SPECIFICATION: 781200001_PK
4. MATES WITH: 87933, 200989, 201021, 201022, 201173
5. PARTS CONFORMS TO CLASS "B" REQUIREMENT OF COSMETIC SPECIFICATION PS-45499-002
6. MOLEX LOGO AND CAVITY LOCATED AS SHOWN.
7. NON-FUNCTIONAL CORING IS SUBJECTED TO CHANGES WITHOUT NOTICE.
8. THE ABOVE 24 CKT SHOWN IS FOR ILLUSTRATION ONLY.



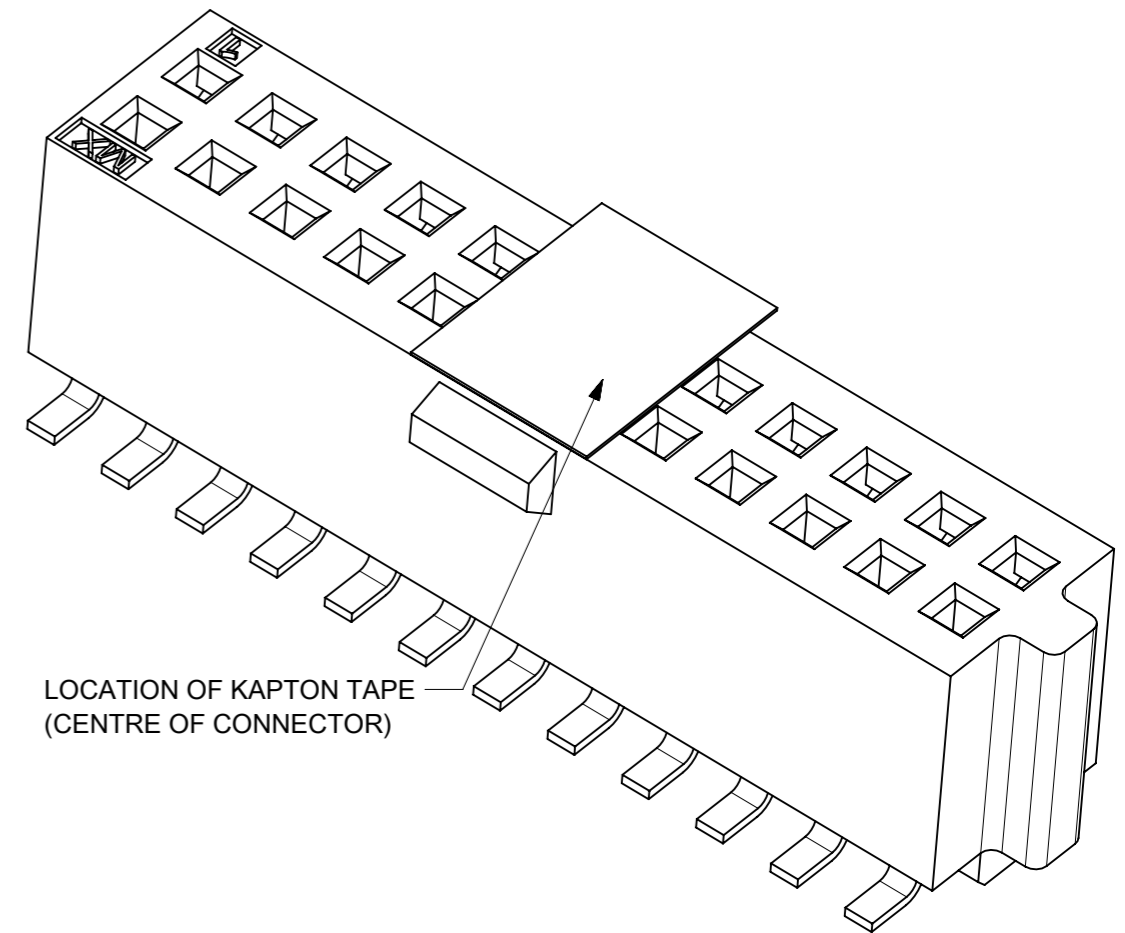
CKT SIZE	DIMENSION	
	A	B
4	2.75	1.27
6	4.02	2.54
8	5.29	3.81
10	6.56	5.08
12	7.83	6.35
14	9.10	7.62
16	10.37	8.89
18	11.64	10.16
20	12.91	11.43
22	14.18	12.70
24	15.45	13.97



RECOMMENDED PCB LAYOUT
TOLERANCE ± 0.05
(24 CKT SHOWN IS FOR ILLUSTRATION ONLY)

THIS DRAWING CONTAINS INFORMATION THAT IS PROPRIETARY TO MOLEX ELECTRONIC TECHNOLOGIES, LLC AND SHOULD NOT BE USED WITHOUT WRITTEN PERMISSION		CURRENT REV DESC:		molex	
DIMENSION UNITS	SCALE				
MM	NTS			1.27MM PITCH SLIM-GRID VERTICAL SMT RECEPTACLE	
GENERAL TOLERANCES (UNLESS SPECIFIED)				PRODUCT CUSTOMER DRAWING	
ANGULAR TOL	$\pm 3.0^\circ$			DOCUMENT NUMBER	
4 PLACES	\pm	EC NO: 757088	2023/05/05	781200001	
3 PLACES	\pm	DRWN: SUAIFR	2023/07/19	DOC TYPE	DOC PART
2 PLACES	± 0.2	CHK'D: SUAIFR	2023/07/19	PSD	000
1 PLACE	\pm	APPR: MRAMAKRISHNA	2023/07/19	REVISION	
0 PLACES	\pm	INITIAL REVISION:		A5	
DRAFT WHERE APPLICABLE MUST REMAIN WITHIN DIMENSIONS		THIRD ANGLE PROJECTION	DRAWING	SERIES	MATERIAL NUMBER
			A3-SIZE	78120	SEE TABLE
		CUSTOMER	SHEET NUMBER		
		GENERAL MARKET	1 OF 3		

CKT SIZE	ASSEMBLY P/N WITHOUT KAPTON TAPE IN TUBE	ASSEMBLY P/N WITH KAPTON TAPE IN TUBE (TOOLED)	ASSEMBLY P/N WITH KAPTON TAPE IN T&R	TAPE & REEL TOOLED ^(A5)
4	78120-0407	78120-0417	78120-0427	N
	78120-0408	78120-0418	78120-0428	
	78120-0409	78120-0419	78120-0429	
6	78120-0607	78120-0617	78120-0627	Y
	78120-0608	78120-0618	78120-0628	
	78120-0609	78120-0619	78120-0629	
8	78120-0807	78120-0817	78120-0827	Y
	78120-0808	78120-0818	78120-0828	
	78120-0809	78120-0819	78120-0829	
10	78120-1007	78120-1017	78120-1027	Y
	78120-1008	78120-1018	78120-1028	
	78120-1009	78120-1019	78120-1029	
12	78120-1207	78120-1217	78120-1227	N
	78120-1208	78120-1218	78120-1228	
	78120-1209	78120-1219	78120-1229	
14	78120-1407	78120-1417	78120-1427	Y
	78120-1408	78120-1418	78120-1428	
	78120-1409	78120-1419	78120-1429	
16	78120-1607	78120-1617	78120-1627	N
	78120-1608	78120-1618	78120-1628	
	78120-1609	78120-1619	78120-1629	
18	78120-1807	78120-1817	78120-1827	Y
	78120-1808	78120-1818	78120-1828	
	78120-1809	78120-1819	78120-1829	
20	78120-2007	78120-2017	78120-2027	N
	78120-2008	78120-2018	78120-2028	
	78120-2009	78120-2019	78120-2029	
22	78120-2207	78120-2217	78120-2227	Y
	78120-2208	78120-2218	78120-2228	
	78120-2209	78120-2219	78120-2229	
24	78120-2407	78120-2417	78120-2427	Y
	78120-2408	78120-2418	78120-2428	
	78120-2409	78120-2419	78120-2429	



LEGEND

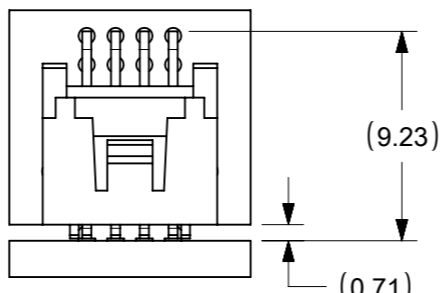
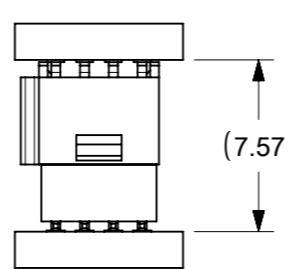
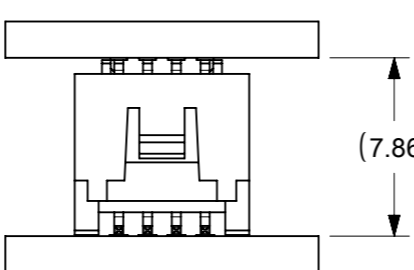
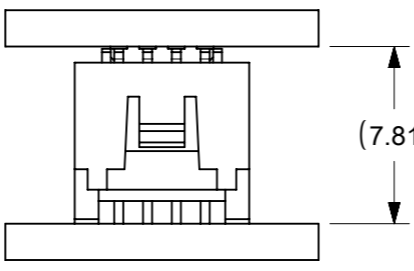
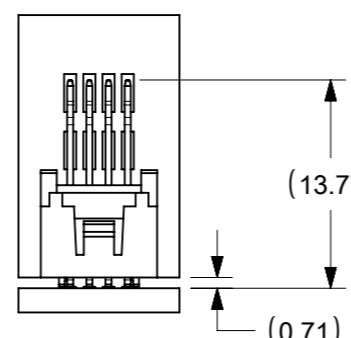
78120-X X X X



CKT SIZE
04 = 4 CKTS
.
24 = 24 CKTS

FINISHES
7 = 0.05um Au MIN. GOLD ON CONTACT AND 2.54um MIN. MATTE TIN ON SOLDERTAIL OVER 1.27um MIN. NICKEL UNDERPLATE OVERALL
8 = 0.38um Au MIN. GOLD ON CONTACT AND 2.54um MIN. MATTE TIN ON SOLDERTAIL OVER 1.27um MIN. NICKEL UNDERPLATE OVERALL
9 = 0.76um Au MIN. GOLD ON CONTACT AND 2.54um MIN. MATTE TIN ON SOLDERTAIL OVER 1.27um MIN. NICKEL UNDERPLATE OVERALL
PACKAGING & PICK AND PLACE CAPABILITY
0 = NO KAPTON TAPE IN TUBE
1 = WITH KAPTON TAPE IN TUBE
2 = WITH KAPTON TAPE IN TAPE AND REEL

THIS DRAWING CONTAINS INFORMATION THAT IS PROPRIETARY TO MOLEX ELECTRONIC TECHNOLOGIES, LLC AND SHOULD NOT BE USED WITHOUT WRITTEN PERMISSION									
DIMENSION UNITS	SCALE	CURRENT REV DESC:			molex				
MM	NTS								
GENERAL TOLERANCES (UNLESS SPECIFIED)					1.27MM PITCH SLIM-GRID VERTICAL SMT RECEPTACLE				
ANGULAR TOL	±	3.0°	EC NO: 757088			PRODUCT CUSTOMER DRAWING			
4 PLACES	±		DRWN: SUAIFR 2023/05/05			DOCUMENT NUMBER			
3 PLACES	±		CHK'D: SUAIFR 2023/07/19			781200001			
2 PLACES	±	0.2	APPR: MRAMAKRISHNA 2023/07/19			DOC TYPE DOC PART REVISION			
1 PLACE	±		INITIAL REVISION:			PSD 000 A5			
0 PLACES	±		DRWN: SCHEONG 2016/02/21			MATERIAL NUMBER CUSTOMER SHEET NUMBER			
DRAFT WHERE APPLICABLE MUST REMAIN WITHIN DIMENSIONS			THIRD ANGLE PROJECTION		DRAWING	SERIES	GENERAL MARKET		2 OF 3
					A3-SIZE	78120			

BOARD TO BOARD (BTB) DISTANCE

HEADER	MATES WITH (RECEPTACLE)	BTB DIST.	PICTORIAL VIEW
201021	78120	9.23	
87933		7.57	
200989		7.86	
201022		7.81	
201173		13.77	

THIS DRAWING CONTAINS INFORMATION THAT IS PROPRIETARY TO MOLEX ELECTRONIC TECHNOLOGIES, LLC AND SHOULD NOT BE USED WITHOUT WRITTEN PERMISSION		CURRENT REV DESC:			
DIMENSION UNITS	SCALE	EC NO: 757088			
MM	NTS	DRWN: SUAIFR 2023/05/05		1.27MM PITCH SLIM-GRID VERTICAL SMT RECEPTACLE	
GENERAL TOLERANCES (UNLESS SPECIFIED)		CHK'D: SUAIFR 2023/07/19		PRODUCT CUSTOMER DRAWING	
ANGULAR TOL	± 3.0 °	APPR: MRAMAKRISHNA 2023/07/19		DOCUMENT NUMBER	DOC TYPE DOC PART REVISION
4 PLACES	±	INITIAL REVISION:		781200001	PSD 000 A5
3 PLACES	±	DRWN: SCHEONG 2016/02/21		MATERIAL NUMBER	
2 PLACES	± 0.2	APPR: KHLIM 2016/07/18		CUSTOMER	
1 PLACE	±	DRAFT WHERE APPLICABLE MUST REMAIN WITHIN DIMENSIONS		SEE TABLE	
0 PLACES	±	THIRD ANGLE PROJECTION	DRAWING	SERIES	SHEET NUMBER
			A3-SIZE	78120	3 OF 3