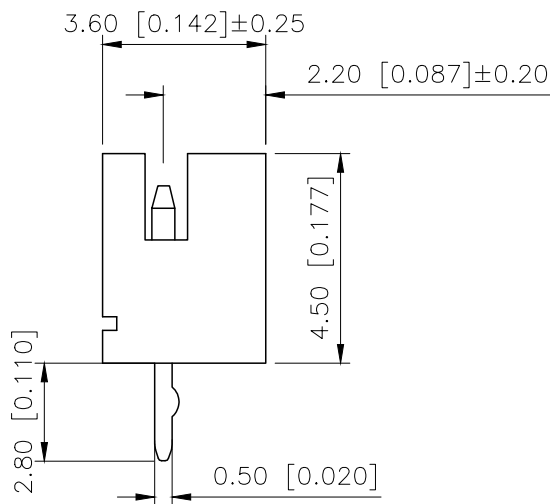
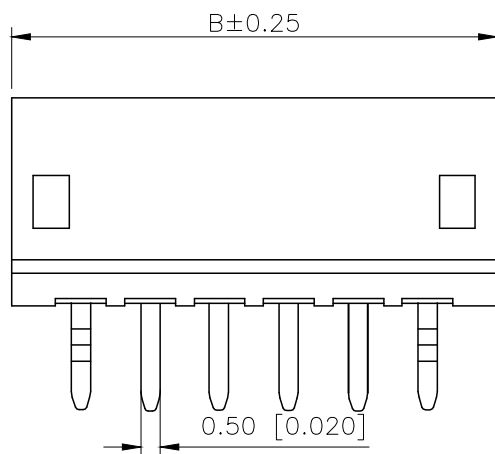
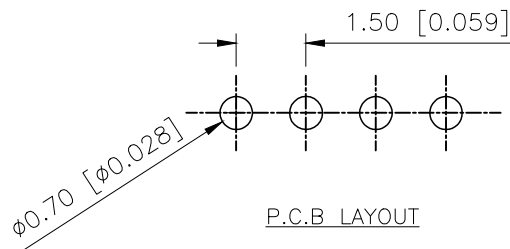
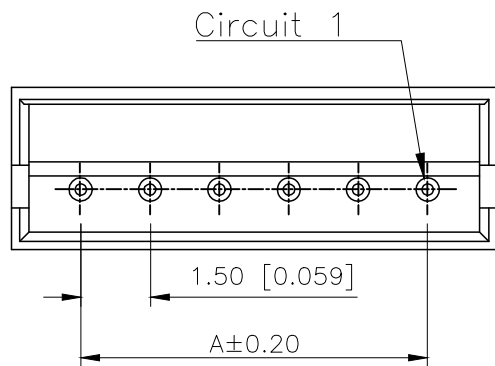


REVISIONS					
REV.	ECN NO.	LOCATION	DESCRIPTION	DATE	DESIGN
A0	N/A		INITIAL RELEASE	/	/
A1	N/A		图面升级整理图面	2024.9.04	阿树



■SPECIFICATIONS

- Voltage rating:100V AC/DC
- Current rating:1A AC/DC
- Withstanding Voltage:500V AC/minute
- Temperature range:-40°C~+125°C
- Insulation resistance:≥500MΩ
- Contact resistance:≤20mΩ

PART NO.:

X1502 W V-XX K-46 V01
① ② ③ ④ ⑤ ⑥ ⑦

- ①Series No
- ②Category:W-Wafer
- ③Welding Board Angle:V-Stright 180°
- ④Row No.Pin No:XX-02~15Pin
- ⑤Plug the pin & Special No:K-KinK
- ⑥Material:46-PA46 UL94V-0
- ⑦Planting:V01-Gold 1u"

Poles	Dimensions(mm)		Poles	Dimensions(mm)	
	A	B		A	B
02	1.50	4.50	09	12.00	15.00
03	3.00	6.00	10	13.50	16.50
04	4.50	7.50	11	15.00	18.00
05	6.00	9.00	12	16.50	19.50
06	7.50	10.50	13	18.00	21.00
07	9.00	12.00	14	19.50	22.50
08	10.50	13.50	15	21.00	24.00

X1502WV-XXK-46V01	PA46	Brass	Gold 1u"	X1502H
PART NO	Material	Material(pin)	Finish(pin)	Suitable XKB Terminal

AuGLAR	±5°
X.	±0.40
X.x	±0.30
X.xx	±0.20
X.xxx	±0.15
UNSPECIFIED TOLERANCES	



DESIGN	阿树	VIEW:		MODEL TYPE:	1.50mm Crimp Style Connectors
CHECKED		UNIT:	mm/in	PART NO.:	X1502WV-XXK-46V01
APPROVED		SIZE:	A4	DWG NO.:	