

Product data sheet

Automation technology - Sensors and actuators



Product description **M8 Female angled panel mount connector, Contacts: 3, unshielded, THR, IP67, UL**

Area **series 718**

Part no. **99 3412 282 03**

Degree of protection IP67

Temperature range from/to -40 °C / 85 °C

Mechanical operation > 100 Mating cycles

Weight (g) 3.38

Customs tariff number 85369010

Country of Origin DE

Electrical parameters

Rated voltage 50 V (AC) / 60 V (DC)

Rated impulse voltage 1500 V

Rated current 4.0 A

Pollution degree 3

Overvoltage category II

Insulating material group II

EMC compliance unshielded

Material

Contact body material PA

Contact material CuSn (bronze)

Contact plating Au (gold)

REACH SVHC CAS 7439-92-1 (Lead)

SCIP number 32a9f7dc-0f8d-4980-b790-de9709ade407

Authorization/approvals

Approvals UL

Classifications

eCl@ss 11.1 27-44-01-02

ETIM 9.0 EC002635

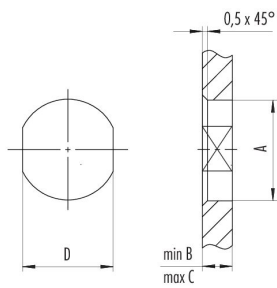
Product description **M8 Female angled panel mount connector, Contacts: 3, unshielded, THR, IP67, UL**

Area **series 718**
Part no. **99 3412 282 03**

Assembly instructions / Panel cut-out

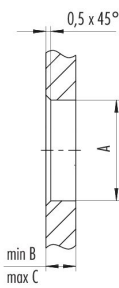
1st Installation proposal

With flats as anti-rotation device



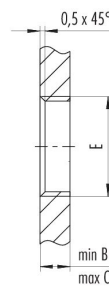
2nd Installation proposal

With bore hole



3rd Installation proposal

With thread to screw in



thread E	A	B	C	D
M8 x 0,5	8,1	2,5	3,5	7,1
M8 x 1	8,1	2,5	3,5	7,1
M10 x 0,75	10,1	2,5	5,0	9,1

Tightening torque 1 Nm

Product description	M8 Female angled panel mount connector, Contacts: 3, unshielded, THR, IP67, UL
Area	series 718
Part no.	99 3412 282 03

Security notices

The connector must not be plugged or unplugged under load. Non-observance and improper use can result in personal injury.

The connectors have been developed for applications in plant engineering, control and electrical equipment construction. The user is responsible for checking whether the connectors can also be used in other areas of application.

Connectors which are used in circuits with voltages dangerous to the touch may only be installed and used by, or under the supervision of, persons with electrical engineering training, taking into account the applicable regulations and standards.

The user must take suitable safety precautions to ensure that the connector cannot be accidentally disconnected.

Plug connectors with enclosure protection IP67 and IP68 are not suitable for use under water. When used outdoors, the plug connectors must be protected separately against corrosion. For further information on the IP protection classes, please refer to the "Technical Information" download centre.

The plug connector is not suitable for mains voltages. Please observe the pollution degree and the overvoltage category. For further information, please refer to the download center "Technical Information".

To lock the cable connector with the device connector, the threaded ring is tightened "hand-tight" (approx. 50 cNm).