

southco®

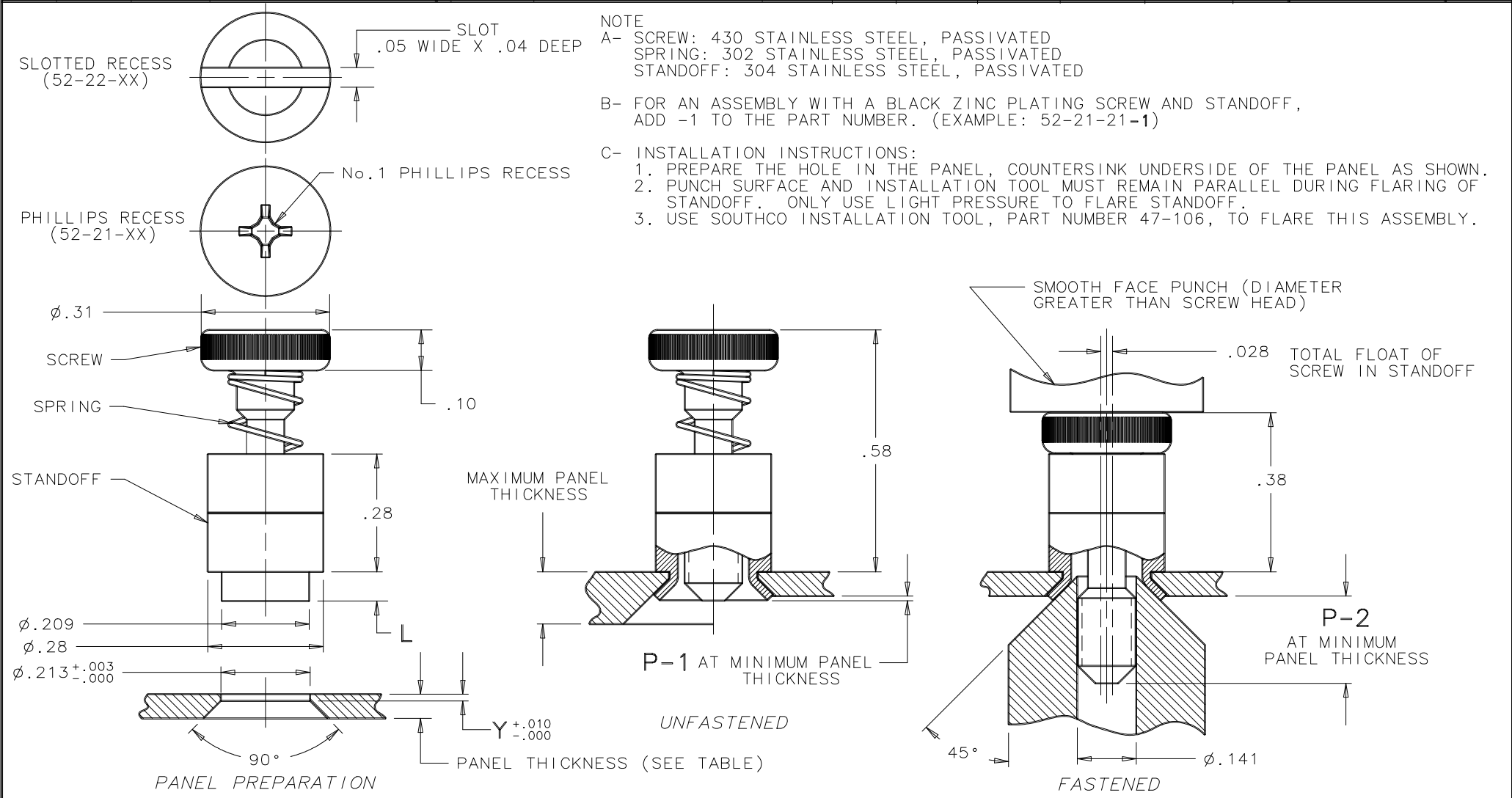
PROPRIETARY ITEM - EXCEPT FOR USES EXPRESSLY GRANTED IN WRITING INFORMATION DISCLOSED HEREON IS CONFIDENTIAL AND ALL RIGHTS PATENT AND OTHERWISE ARE RESERVED BY SOUTHCO, INC.

No. 52 LOW PROFILE CAPTIVE SCREW ASSEMBLY, FLARE-IN STYLE, KNURLED HEAD, 6-32 THREAD

DATE	DRAWN	CHKD	SCALE	DRAWING NUMBER
12MAY95	JSS	SML	3 : 1	J-52-2-1

REV.	DATE	DRAWN	REVISION	PART No.	MATERIAL AND FINISH	PANEL THICKNESS MIN. MAX.	DIM. L	DIM. Y	DIM. P-1	DIM. P-2		MILLIMETER DIMENSIONS DIMENSIONS WITHOUT TOLERANCES ARE FOR REFERENCE ONLY.
A	11AUG99	MDM CHW	PRN: 52-141	52-21-21	SEE NOTE A	.058 .125	.070	.016	.01	.21		
B	22AUG2019	CMS ACH	PRN: P2019-2107	52-21-43	SEE NOTE A	.126 .187	.135	.063	.01	.21		
				52-22-21	SEE NOTE A	.058 .125	.070	.016	.01	.21		
				52-22-43	SEE NOTE A	.126 .187	.135	.063	.01	.21		

THIRD ANGLE PROJECTION
A4
PAPER
SIZE



NOTE
A- SCREW: 430 STAINLESS STEEL, PASSIVATED
SPRING: 302 STAINLESS STEEL, PASSIVATED
STANDOFF: 304 STAINLESS STEEL, PASSIVATED

B- FOR AN ASSEMBLY WITH A BLACK ZINC PLATING SCREW AND STANDOFF, ADD -1 TO THE PART NUMBER. (EXAMPLE: 52-21-21-1)

C- INSTALLATION INSTRUCTIONS:
1. PREPARE THE HOLE IN THE PANEL, COUNTERSINK UNDERSIDE OF THE PANEL AS SHOWN.
2. PUNCH SURFACE AND INSTALLATION TOOL MUST REMAIN PARALLEL DURING FLARING OF STANDOFF. ONLY USE LIGHT PRESSURE TO FLARE STANDOFF.
3. USE SOUTHCO INSTALLATION TOOL, PART NUMBER 47-106, TO FLARE THIS ASSEMBLY.