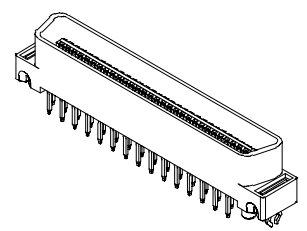
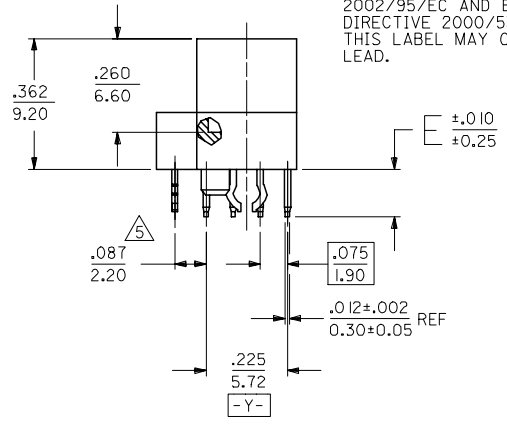
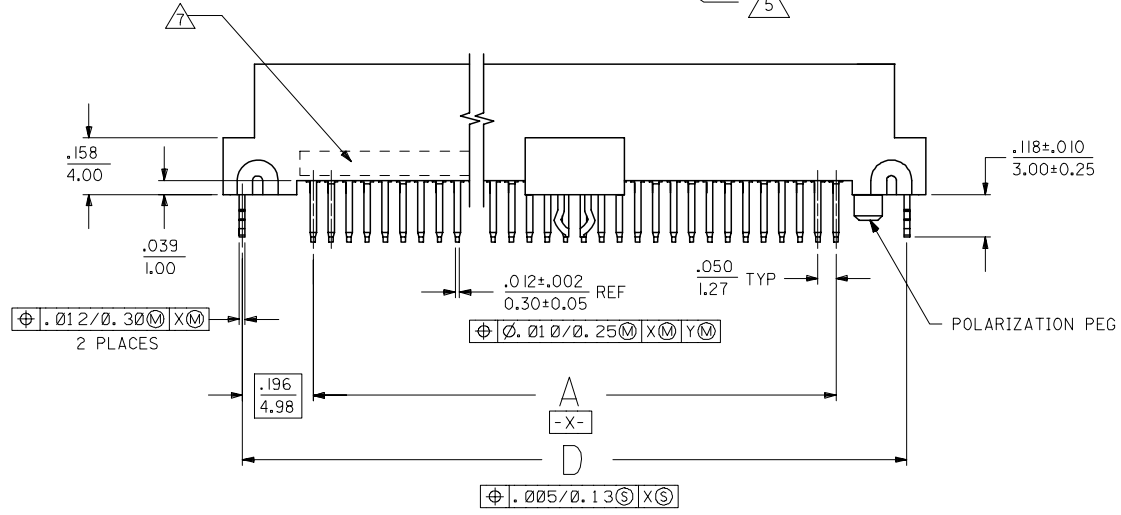


NOTES:

- 1) MATERIALS:
HOUSING - LIQUID CRYSTAL POLYMER (LCP), GLASS FILLED, UL94V-0, COLOR: BLACK
TERMINALS - COPPPER ALLOY
METAL PEGS - COPPPER ALLOY
- 2) TERMINAL FINISH:
30 MICROINCH/0.76 MICROMETER MINIMUM GOLD IN CONTACT AREA AND 50 MICROINCH/1.27 MICROMETER MINIMUM TIN IN TAIL AREA OVER NICKEL UNDERPLATING OVERALL.
- 3) ASSEMBLY MATES WITH MOLEX P/N SDA-71660-****.
- 4) CONFORMS TO PRODUCT SPECIFICATION PS-71660.
- 5) CENTER PEG IS ONLY ON I20 AND I30 CIRCUIT ASSEMBLIES.
- 6) RECOMMENDED P.C. BOARD THICKNESS IS .062 (1.6).
- 7) FOUR DIGIT DATE CODE (WK YR), EXAMPLE => 26 96 LOCATED IN AREA INDICATED.
- 8) SEE CHART ON SHEET 2 FOR PACKAGING INFORMATION.

NOTE FOR LEAD FREE CONVERSION:

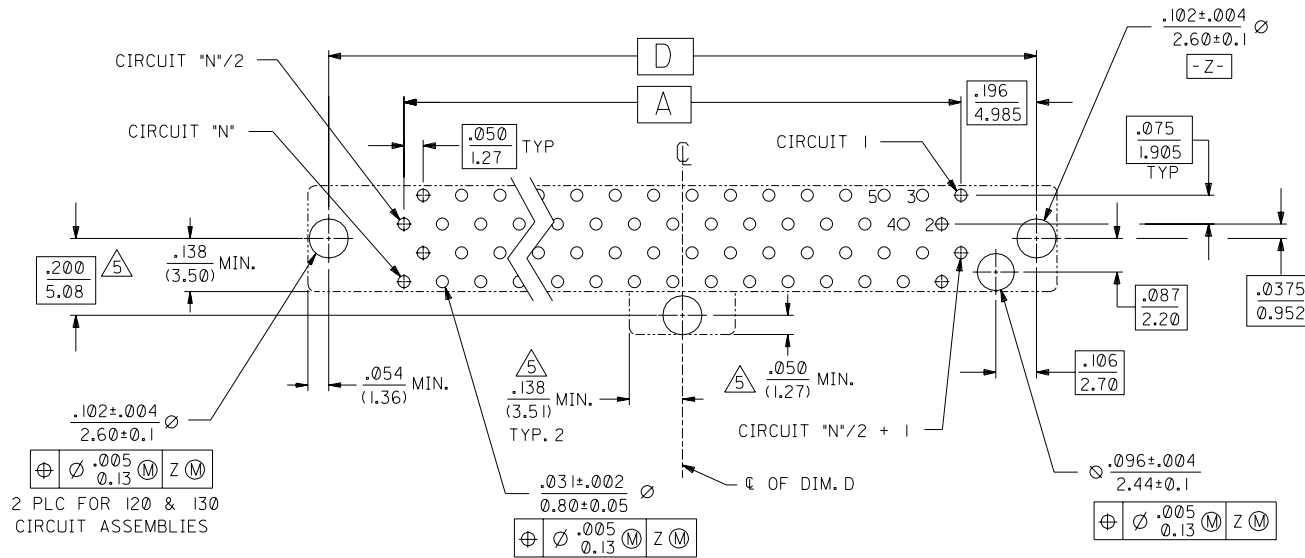
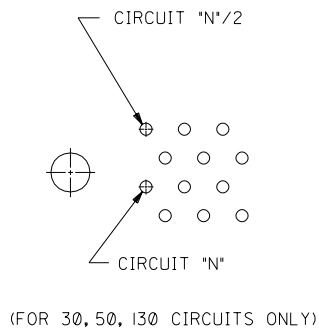
THE PRIMARY SHIPPING CARTON WILL BE LABELED "COMPLIANT TO RoHS DIRECTIVE 2002/95/EC AND ELV ANNEX II OF DIRECTIVE 2000/53/EC". CARTONS WITHOUT THIS LABEL MAY CONTAIN PRODUCT WITH LEAD.



60 CIRCUIT ASSEMBLY SHOWN
SCALE- 2:1

| | | | | | | | | | |
|-----------------------------------------------------------------------------------------------------------------------------|-------------------------------|------------------------------------------------------------------------------------------------------------------|-----------------------------------------------------------------------------------------------------------------------|----------------------------------------------------------------------------------------------------------------------------------|--|--------------------------------|----------------------|------------------------|--|
| CHG TERMINAL MATL FC NO: UCP2005-0775 DRAWN: BARKER 2005/06/13 CHKD: MORGAN 2005/06/13 APPR: SMILLER 2005/06/23 | QUALITY SYMBOLS ▽=0 ▽=0 | GENERAL TOLERANCES (UNLESS SPECIFIED) | | DIMENSION STYLE IN/MM | | SCALE 1:1 | DESIGN UNITS INCH | THIRD ANGLE PROJECTION | |
| | | 4 PLACES ± --- ± --- 3 PLACES ± --- ± .005 2 PLACES ± 0.13 ± .010 1 PLACE ± 0.25 ± --- ANGULAR ±1/2° | mm INCH DRAWN BY DATE RAN 1992/06/15 CHECKED BY DATE RAN 1992/06/15 APPROVED BY DATE CAB 1992/06/15 | TITLE SALES ASSEMBLY MOLEX EBBI 50D VERTICAL PLUG CONNECTOR | | MATERIAL NO. SDA-71661-1*** | | DOCUMENT NO. | |
| DRAFT WHERE APPLICABLE MUST REMAIN WITHIN DIMENSIONS | | SEE TABLE | | THIS DRAWING CONTAINS INFORMATION THAT IS PROPRIETARY TO MOLEX INCORPORATED AND SHOULD NOT BE USED WITHOUT WRITTEN PERMISSION | | | | | |

| | |
|-----|-----|
| 2 | K |
| 1 | M |
| SHT | REV |



RECOMMENDED PC BOARD LAYOUT Δ
 COMPONENT SIDE
 (FOR 40, 60, 68, 80, 100, 120 CIRCUITS ONLY)

| | | | | | | | | |
|--------------------|-------------|--------------------|---------------|---------------|---------------|---------------|-------------|-------------------------|
| 71661-1430 | 015-92-2530 | 130 | 3.200 (81.28) | 3.426 (87.02) | 3.699 (93.95) | 3.592 (91.25) | .110 (2.79) | TRAYS PER PK-71660 |
| 71661-1420 | 015-92-2520 | 120 | 2.950 (74.93) | 3.176 (80.67) | 3.449 (87.60) | 3.342 (84.90) | .110 (2.79) | TRAYS PER PK-71660 |
| 71661-1400 | 015-92-2500 | 100 | 2.450 (62.23) | 2.676 (67.97) | 2.949 (74.90) | 2.842 (72.20) | .110 (2.79) | TRAYS PER PK-71660 |
| 71661-1381 | 015-92-2481 | 80 | 1.950 (49.53) | 2.176 (55.27) | 2.449 (62.20) | 2.342 (59.50) | .110 (2.79) | TUBES PER PK-70873-0817 |
| 71661-1380 | 015-92-2480 | 80 | 1.950 (49.53) | 2.176 (55.27) | 2.449 (62.20) | 2.342 (59.50) | .110 (2.79) | TRAYS PER PK-71660 |
| 71661-1368 | 015-92-2468 | 68 | 1.650 (41.91) | 1.875 (47.65) | 2.149 (54.58) | 2.042 (51.88) | .110 (2.79) | TRAYS PER PK-71660 |
| 71661-1360 | 015-92-2460 | 60 | 1.450 (36.83) | 1.676 (42.57) | 1.949 (49.50) | 1.842 (46.80) | .110 (2.79) | TRAYS PER PK-71660 |
| 71661-1350 | 015-92-2450 | 50 | 1.200 (30.48) | 1.426 (36.22) | 1.699 (43.15) | 1.592 (40.45) | .110 (2.79) | TRAYS PER PK-71660 |
| 71661-1340 | 015-92-2440 | 40 | .950 (24.13) | 1.176 (29.87) | 1.449 (36.80) | 1.342 (34.10) | .110 (2.79) | TRAYS PER PK-71660 |
| 71661-1330 | 015-92-2430 | 30 | .700 (17.78) | .925 (23.52) | 1.199 (30.45) | 1.092 (27.75) | .110 (2.79) | TRAYS PER PK-71660 |
| 71661-1130 | 015-92-2130 | 130 | 3.200 (81.28) | 3.426 (87.02) | 3.699 (93.95) | 3.592 (91.25) | .134 (3.40) | TRAYS PER PK-71660 |
| 71661-1120 | 015-92-2120 | 120 | 2.950 (74.93) | 3.176 (80.67) | 3.449 (87.60) | 3.342 (84.90) | .134 (3.40) | TRAYS PER PK-71660 |
| 71661-1100 | 015-92-2100 | 100 | 2.450 (62.23) | 2.676 (67.97) | 2.949 (74.90) | 2.842 (72.20) | .134 (3.40) | TRAYS PER PK-71660 |
| 71661-1080 | 015-92-2080 | 80 | 1.950 (49.53) | 2.176 (55.27) | 2.449 (62.20) | 2.342 (59.50) | .134 (3.40) | TRAYS PER PK-71660 |
| 71661-1068 | 015-92-2068 | 68 | 1.650 (41.91) | 1.875 (47.65) | 2.149 (54.58) | 2.042 (51.88) | .134 (3.40) | TRAYS PER PK-71660 |
| 71661-1060 | 015-92-2060 | 60 | 1.450 (36.83) | 1.676 (42.57) | 1.949 (49.50) | 1.842 (46.80) | .134 (3.40) | TRAYS PER PK-71660 |
| 71661-1050 | 015-92-2050 | 50 | 1.200 (30.48) | 1.426 (36.22) | 1.699 (43.15) | 1.592 (40.45) | .134 (3.40) | TRAYS PER PK-71660 |
| 71661-1040 | 015-92-2040 | 40 | .950 (24.13) | 1.176 (29.87) | 1.449 (36.80) | 1.342 (34.10) | .134 (3.40) | TRAYS PER PK-71660 |
| 71661-1030 | 015-92-2030 | 30 | .700 (17.78) | .925 (23.52) | 1.199 (30.45) | 1.092 (27.75) | .134 (3.40) | TRAYS PER PK-71660 |
| ENGINEERING NUMBER | EDP NUMBER | CIRCUIT SIZE ("N") | A | B | C | D | E | PACKAGING |

| DIMENSIONS SHOWN (METRIC) INCH | | UNLESS OTHERWISE SPECIFIED TOLERANCES: ANGULAR $\pm 1/2^\circ$ | | MFG, SH, REV. LTR. REVISIONS | |
|------------------------------------------------------|---------------|----------------------------------------------------------------|-----------|-----------------------------------------------------------------------------------------------------------------------|--|
| 3 PLACE $\pm .005$ | INCH | --- | METRIC | REVISE ONLY ON CAD SYSTEM | |
| 2 PLACE $\pm .01$ | INCH | ± 0.13 | METRIC | TITLE SALES ASSEMBLY MOLEX EBBI 50D VERTICAL PLUG CONNECTOR | |
| 1 PLACE --- | INCH | ± 0.25 | METRIC | MOLEX INCORPORATED SHEET NO. DATE U.S.A. 2 6/15/92 | |
| DRAFT WHERE APPLICABLE MUST REMAIN WITHIN DIMENSIONS | | PART NO. SEE TABLE | | DRWG. NO. SDA-71661-1*** | |
| DRWG. BY RAN | CHK'D. BY RAN | FILE NAME S71661X1 | SCALE 4:1 | THIS DRAWING CONTAINS INFORMATION THAT IS PROPRIETARY TO MOLEX INC. AND SHOULD NOT BE USED WITHOUT WRITTEN PERMISSION | |
| APP'D. BY CAB | SCALE 4:1 | 502 | | DIV. C C | |