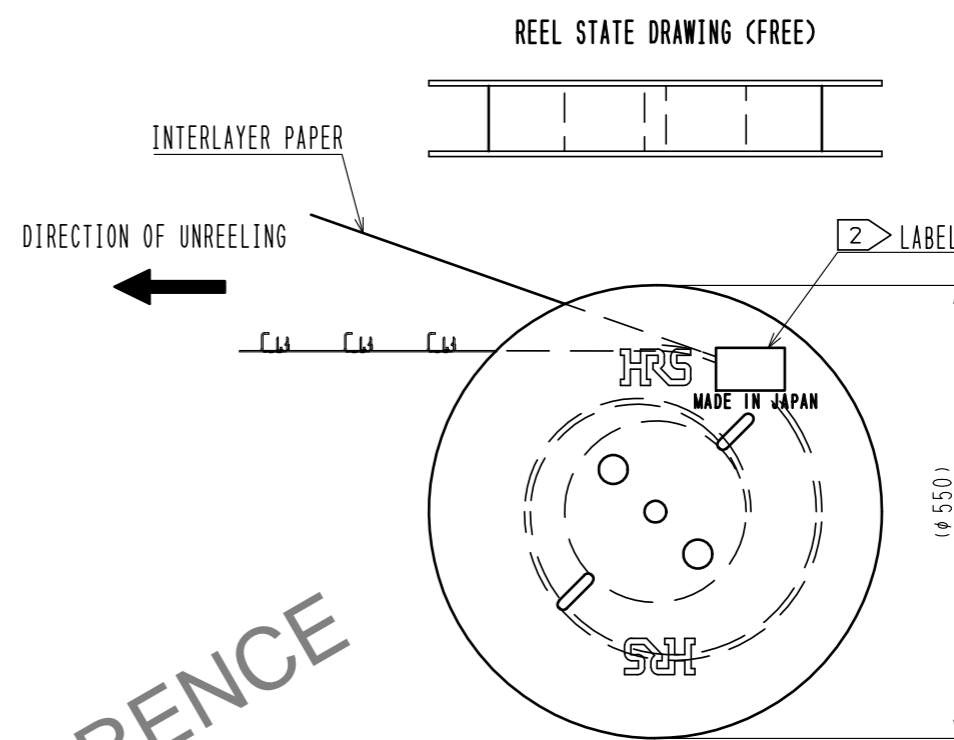
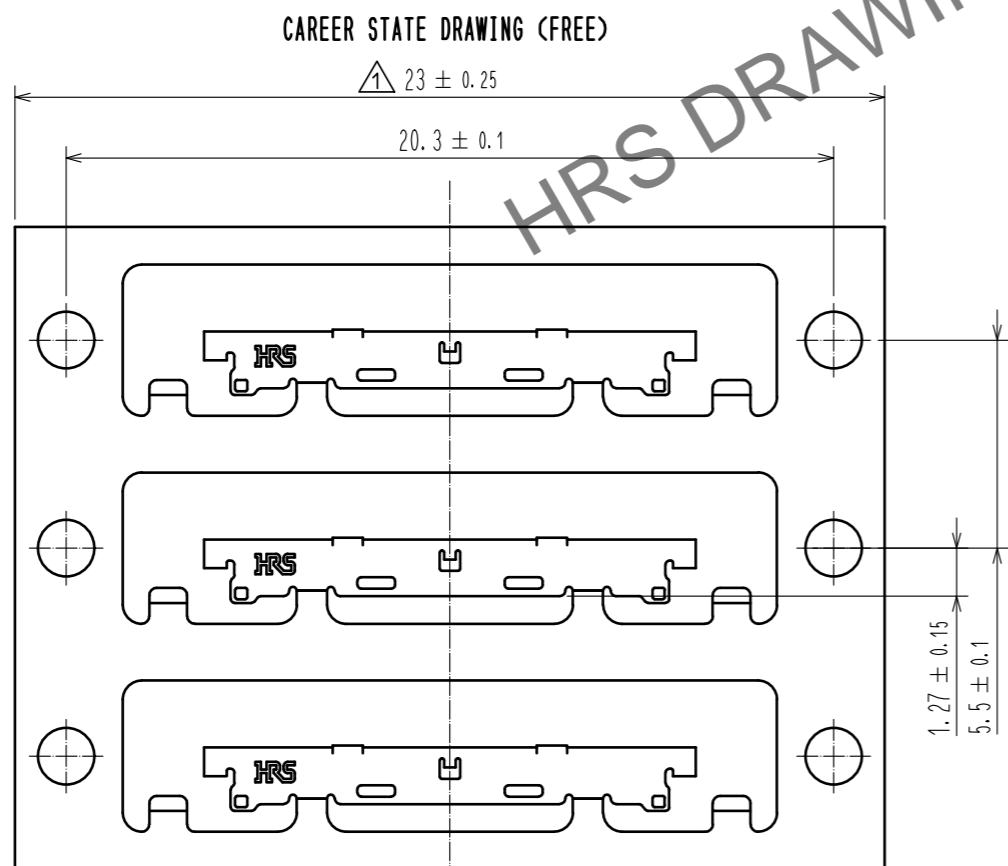
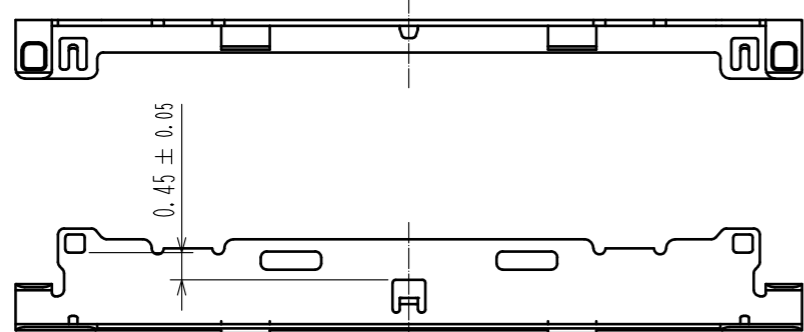
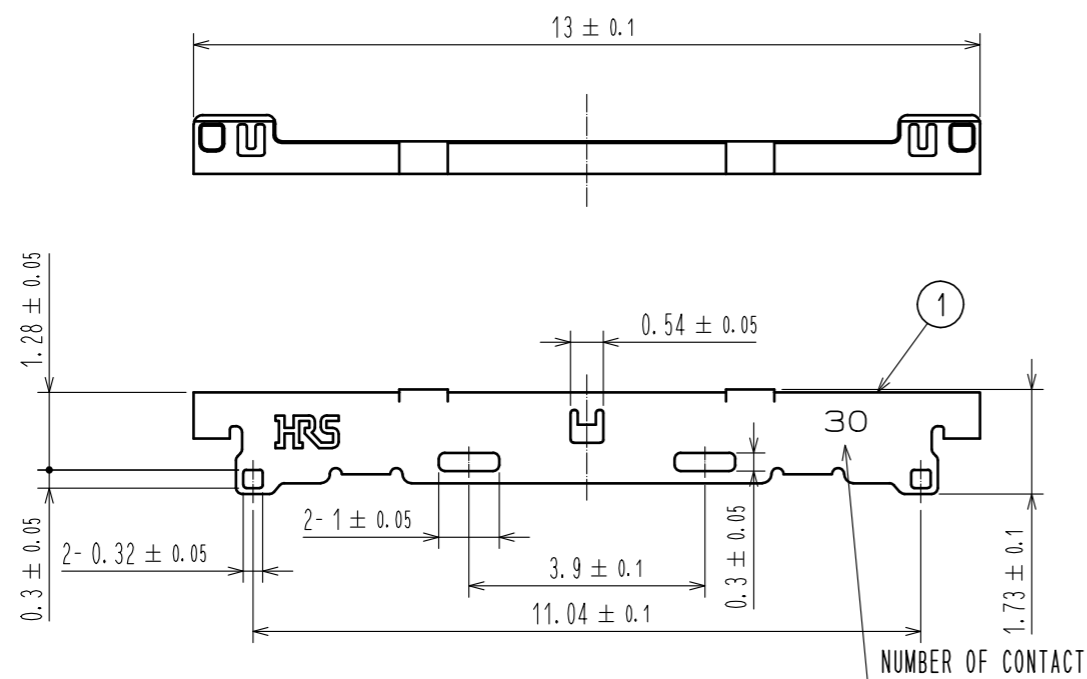


Jul.1.2024 Copyright 2024 HIROSE ELECTRIC CO., LTD. All Rights Reserved.
 In case of consideration for using Automotive equipment / device which demand high reliability, kindly contact our sales window correspondents.



- NOTES
- 1. PER REEL: 10000 COMPONENTS
 - 2. DETAILS OF THE LABEL ARE SHOWN BELOW.
 - 3. THE ASSEMBLY IS COMPLETED BY COMBINING TWO PARTS 'CONNECTOR UNIT, AND METAL SHIELDING'. REFER TO THE TABLE FOR EACH ITEM No., PART NAME, PART No AND CODE No.

2 LABEL DETAILS

HRS		INSPECTION 検査
CODE No. 品名コード	CL662-5618-6	
PART NO. 品名	DF56-30P-SHL	
QTY 数量	10,000 PCS	
PECULIAR 仕様		
Lot No		
SPLICE 継ぎ目		

3

ITEM No.	PART NAME	PART No.	CODE No.
-	CONNECTOR UNIT	DF56-30P-0.3SD(51)	CL662-5617-3-51
1	METAL SHIELDING	DF56-30P-SHL	CL662-5618-6-00

NO.	MATERIAL	FINISH . REMARKS	NO.	MATERIAL	FINISH . REMARKS
			1	STAINLESS	WHOLE AREA : Sn PLATING 1μm min UNDER PLATING : Ni PLATING 0.2μm min

UNITS mm	SCALE FREE	COUNT 1	DESCRIPTION OF REVISIONS DIS-D-00002854	DESIGNED DS. YAMAKOSHI	CHECKED NK. NINOMIYA	DATE 18.01.30
HRS HIROSE ELECTRIC CO., LTD.	APPROVED : TS. SAKATA	12.06.12	DRAWING NO. EDC3-344842-00 PART NO. DF56-30P-SHL CODE NO. CL662-5618-6-00			
	CHECKED : HS. OZAWA	12.06.12				
	DESIGNED : TP. MATSUMOTO	12.06.12				
	DRAWN : TP. MATSUMOTO	12.06.12				