



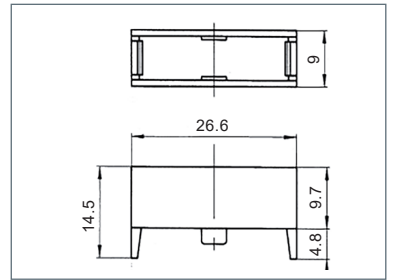
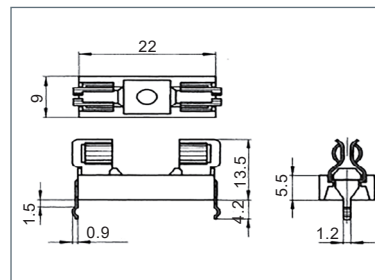
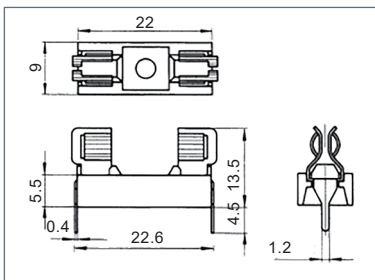
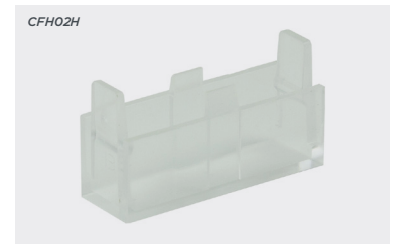
# 5x20mm PCB fuse carriers

## Product overview

- PCB mounting
- Kinked pin for PCB retention CFH02/W
- Transparent insulation cover CFH02H
- 22.6mm pitch
- EN60127-6 and UL4281-1
-   approved (Approvals do not apply to cover)



| PART NO. | TYPE         |
|----------|--------------|
| CFH02    | Straight pin |
| CFH02/W  | Kinked pin   |
| CFH02H   | Cover        |

| SPECIFICATION             |   |
|---------------------------|---|
| Rating                    | VDE - 6.3A/250VAC<br>UL - 18A/250VAC                                      |
| Contacts/resistance       | Tinned, nickel plated brass   |
| Moulding                  | UL94-V1 self extinguishing PPOM<br>Cover material : UL94-V2 thermoplastic |
| Dielectric strength       | 3kV / 60 sec  |
| Temperature               | -20° to 125°C   |
| Operating power           | 1.6W (VDE)  |
| Recommended PCB hole size | 1.3mm   |
| Shocksafe category        | PC1   |



# 5x20mm compact horizontal and vertical PCB mounting fuseholders

## Product overview

- Finger or screwdriver release, bayonet carrier
- Horizontal or vertical mounting
- Compact footprint 10mm pitch
- Anti solder wicking
- EN60127-6 and UL4281-1
-   approved



| SPECIFICATION             |                                     |
|---------------------------|-------------------------------------|
| Rating                    | VDE - 10A/250VAC<br>UL - 20A/250VAC |
| Contacts/resistance       | Tinned nickel plated brass, <5mΩ    |
| Moulding                  | UL94-V0 flame retardant PBT         |
| Dielectric strength       | 3kV / 60"                           |
| Power dissipation         | 2.5W (VDE)                          |
| Recommended PCB hole size | 1.5mm                               |
| Insulation resistance     | 100MΩ                               |
| Shocksafe category        | PC2                                 |

| PART NO. | TYPE                |
|----------|---------------------|
| CFH06    | Vertical mounting   |
| CFH07    | Horizontal mounting |

