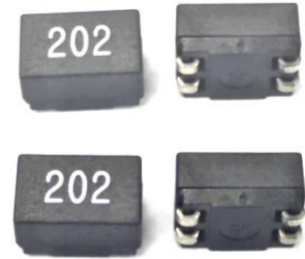


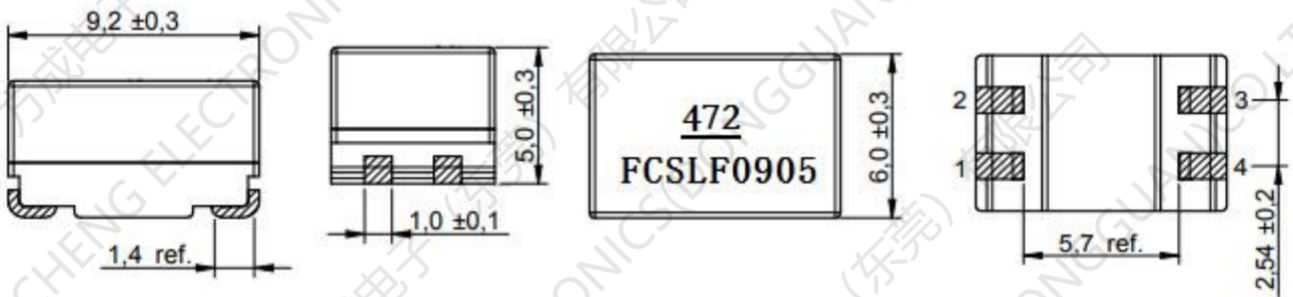
SMD Common Mode Line Filter

FC-SLF0905 –Series

- Small size
- High Impedance up to 1500 Ω
- Frequency Range: 1MHz, 0.1 Vrms
- Low Primary DCR version
- Ambient temperature -40°C to $+85^{\circ}\text{C}$
- Storage temperature Component: -40°C to $+125^{\circ}\text{C}$



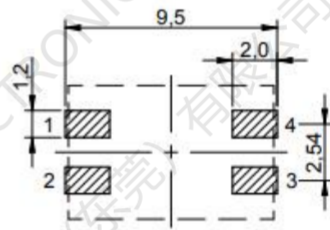
1. Dimensions:mm



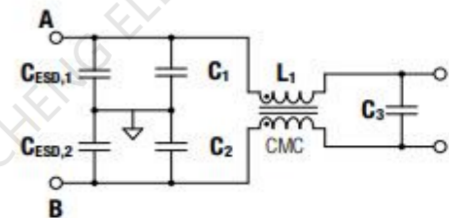
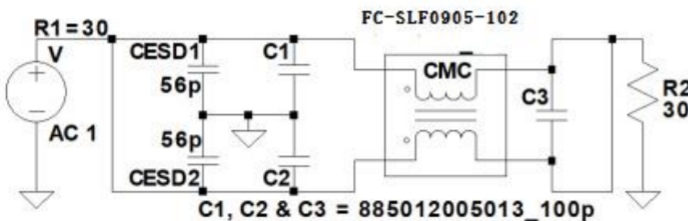
2.Schematic:



3.LAYOUT RECOMMENDATION:(mm)



4.Application Fig:



FC-SLF0905 -Series SMD Common Mode Line Filter

5. ELECTRIC CHARACTERICS

Part Number	Test condition	DC Resistance N1,N2(Ω)	Inductance (uH)	Nominal voltage Vdc(V)	Rated Current (A)	Freq Range (MHZ)
FC-SLF0905-100YL	0.1V,1kHz	0.08 max	10±30%	50	1.6	20~300
FC-SLF0905-250YL	0.1V,1kHz	0.16 max	25±30%	50	1.0	20~150
FC-SLF0905-400YL	0.1V,1kHz	0.25 max	40±30%	50	0.9	20~100
FC-SLF0905-500YL	0.1V,1kHz	0.32 max	50±30%	50	0.8	20~100
FC-SLF0905-251YL	5mV,100KHz	0.13 max	250±50%	50	1.2	3~20
FC-SLF0905-471YL	5mV,100KHz	0.14 max	470±50%	50	1.1	2~20
FC-SLF0905-501YL	5mV,100KHz	0.15 max	500±50%	50	1.0	1~20
FC-SLF0905-102YL	5mV,100KHz	0.31 max	1000±50%	50	0.8	1~15
FC-SLF0905-202YL	5mV,100KHz	0.45 max	2000±50%	50	0.6	1~5
FC-SLF0905-472YL	5mV,100KHz	0.90 max	4700±50%	50	0.4	0.3~3
FC-SLF0905-652YL	5mV,100KHz	1.05 max	6500±50%	50	0.3	0.3~2

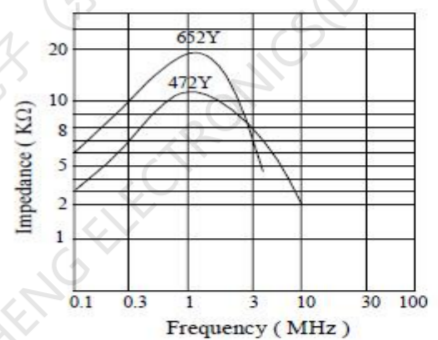
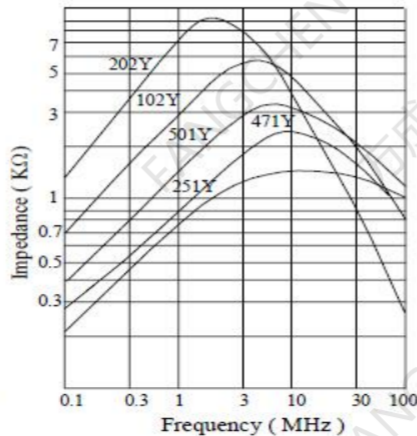
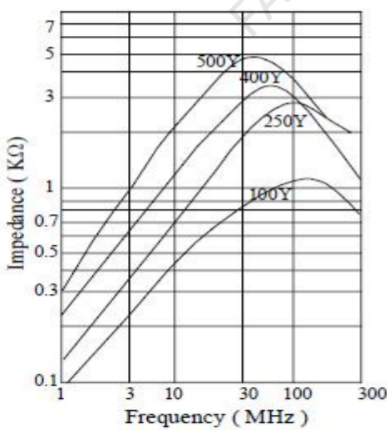
Electrical Specifications @ 25°C — Operating Temperature -40°C to +125°C.

Test equipment : Inductance 100Y ~ 500Y (HP4274A) ;251Y ~ 652Y (HP4194A)

Impedance 100Y ~ 202Y (HP4291A) 472Y ~ 652Y (HP4194A)

HI-Pot test (N1-N2) : 500Vac / 60Hz , 3mA , 3sec.

6. Classification Reflow Profile for SMT components:



Measuring circuit :

