

Heavy Duty Terminal Blocks

1500 Series - Barrier Type

Specifications:

- 75 amps
- 600 volts AC/DC
- Base, phenolic, 150°C (UL RTI)
- Screws, #10-32 phil-slot, brass, nickel plated
- Connector, brass, nickel plated
- 5/8" (.625") line-to-line spacing
- Bare wire range #10-22 AWG CU
- Accepts lugs w/max width of .50"
- See on-line data sheets for additional information

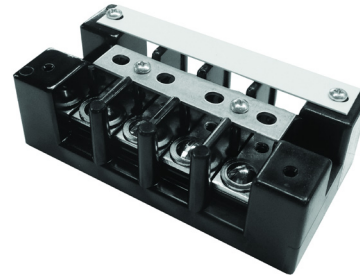
1512 STD



Standards:

- UL recognized file no. XCFR2.E62806
- CSA certified file no. LR19766
- CE compliant (IEC 60947-7-1)
- RoHS compliant

1504 SC



HEAVY DUTY
TERMINAL BLOCKS

# of Poles	Catalog #								Dimensions		Clear Cover	White Cover
									A	B		
2	1502 MCJ	1502 STD	1502 DJ	1502 DJSV	1502 ST	1502 SC	1502 H	2.00	1.62	CC 1502	CW 1502	
4	1504 MCJ	1504 STD	1504 DJ	1504 DJSV	1504 ST	1504 SC	1504 H	3.25	2.88	CC 1504	CW 1504	
6	1506 MCJ	1506 STD	1506 DJ	1506 DJSV	1506 ST	1506 SC	1506 H	4.50	4.12	CC 1506	CW 1506	
8	1508 MCJ	1508 STD	1508 DJ	1508 DJSV	1508 ST	1508 SC	1508 H	5.75	5.38	CC 1508	CW 1508	
12	1512 MCJ	1512 STD	1512 DJ	1512 DJSV	1512 ST	1512 SC	1512 H	8.25	7.88	CC 1512	CW 1512	

See page 116 for DIN Rail Adapter

mm = dim X 25.4

