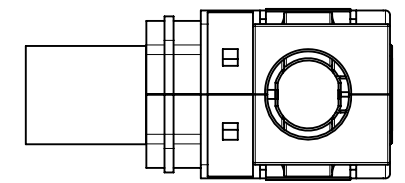
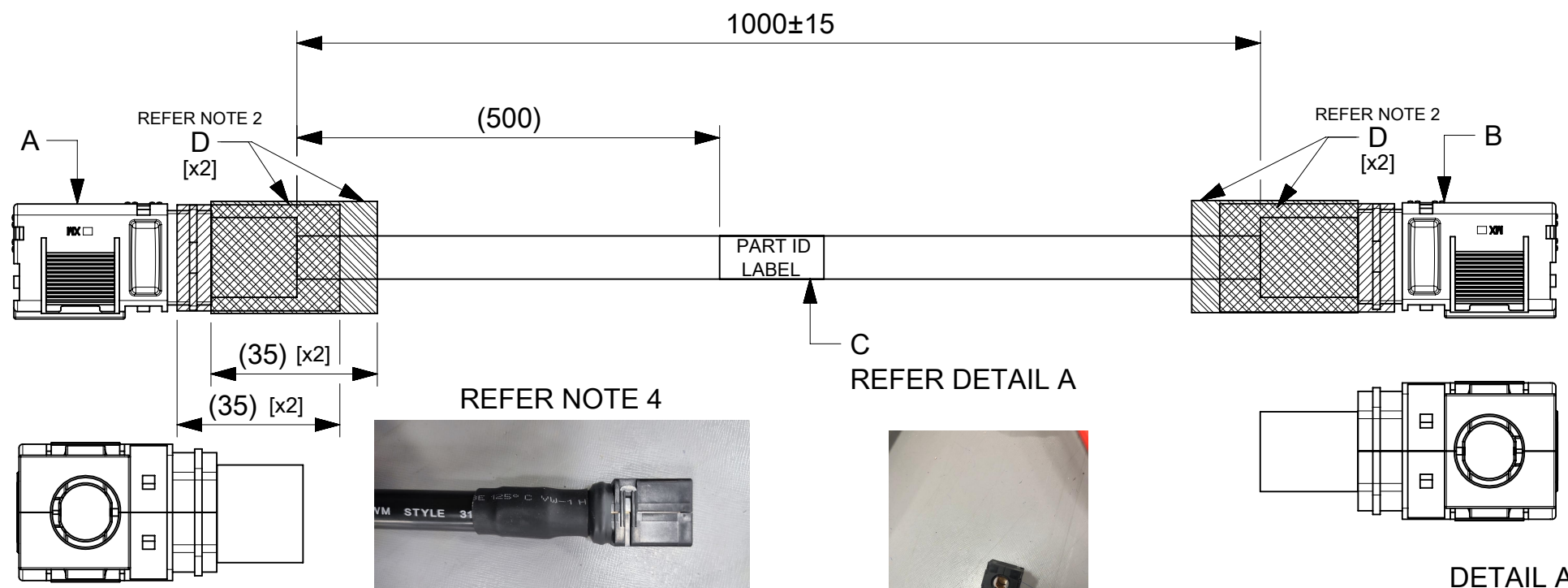


ITEM #	MOLEX PART#	DESCRIPTION	QTY	UOM
A,B	2178841001	6mm SIDEWIZE ASSY 2 AWG RECEPTACLE RED	2	PC
C	-	PART ID LABEL	1	PC
D	-	HST	A/R	M

FROM	TO	CABLE PART#	DESCRIPTION	COLOR
A	B	-	1X2AWG PVC UL1015 RED	RED



2243561216
MOLEX
BATCH WK/YR

- NOTE:
- CABLE ASSEMBLY TO BE ENSURED FOR CONTINUITY.
 - INSTALL HST ON THE BARREL AS SHOWN IN DRAWING.
 - ENSURE LATCH AND THE CRIMPING PROFILE ARE IN THE SAME PLANE.
 - HST (2 QTY) TO BE COVERED FROM THE WIRE INSULATION TO OVER THE RIB, TO ENSURE THERE IS NO EXPOSURE OF BARE MATERIAL.

FUNCTIONAL SYMBOLS	THIS DRAWING CONTAINS INFORMATION THAT IS PROPRIETARY TO MOLEX ELECTRONIC TECHNOLOGIES, LLC AND SHOULD NOT BE USED WITHOUT WRITTEN PERMISSION	
$\nabla_A = 0$	DIMENSION UNITS: mm	SCALE: NTS
$\nabla_E = 0$	CURRENT REV DESC:	
$\nabla_P = 0$	GENERAL TOLERANCES (UNLESS SPECIFIED)	
	ANGULAR TOL: ± °	EC NO: 769243
	4 PLACES ±	DRWN: ROHITJ3 2023/11/09
	3 PLACES ±	CHK'D: SKUMAR07 2023/11/30
	2 PLACES ±	APPR: SKUMAR07 2023/11/30
	1 PLACE ±	INITIAL REVISION:
	0 PLACES ±	DRWN: MARUTG 2023/04/25
		APPR: SKUMAR07 2023/04/27
	DRAFT WHERE APPLICABLE MUST REMAIN WITHIN DIMENSIONS	THIRD ANGLE PROJECTION
	DRAWING: A4-SIZE	SERIES: 224356
	MATERIAL NUMBER: 2243561216	CUSTOMER: GENERAL MARKET
	DOCUMENT NUMBER: 2243561216	DOC TYPE: PSD
	DOC PART: 000	REVISION: E
	SHEET NUMBER: 1 OF 1	

DOCUMENT STATUS	P1	RELEASE DATE	2023/11/30	03:53:46
-----------------	----	--------------	------------	----------