

Product data sheet

Connectors for medical applications

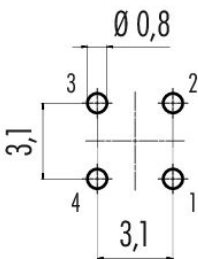


|                     |  |
|---------------------|--|
| Product description | Snap-In Male panel mount connector, Contacts: 4, unshielded, THT, IP67 |
| Area                | series 620   |
| Part no.            | 99 9211 490 04   |

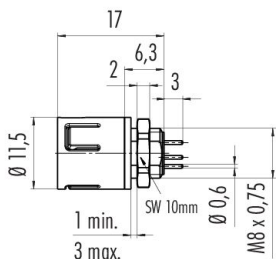
Illustration



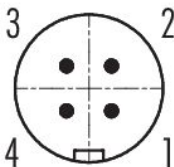
Conductor layout



Scale drawing



Contact arrangement (Plug-in side)



You can find the component part drawing and assembly instructions on the next page.

Technical data

General features

|                          |                            |
|--------------------------|----------------------------|
| Part no.                 | 99 9211 490 04             |
| Connector design         | Male panel mount connector |
| Version                  | Connector pin straight     |
| Connector locking system | snap-in                    |
| Termination              | THT                        |

# Product data sheet

## Connectors for medical applications



|                     |   |
|---------------------|---|
| Product description | <b>Snap-In Male panel mount connector, Contacts: 4, unshielded, THT, IP67</b> |
| Area                | <b>series 620</b>   |
| Part no.            | <b>99 9211 490 04</b>   |

|                           |                     |
|---------------------------|---------------------|
| Degree of protection      | IP67                |
| Temperature range from/to | -25 °C / 85 °C      |
| Mechanical operation      | > 500 Mating cycles |
| Weight (g)                | 1.94                |
| Customs tariff number     | 85369010            |
| Country of Origin         | DE                  |

### Electrical parameters

|                           |                       |
|---------------------------|-----------------------|
| Rated voltage             | 125 V                 |
| Rated impulse voltage     | 1500 V                |
| Rated current             | 2.5 A                 |
| Insulation resistance     | $\geq 10^{10} \Omega$ |
| Pollution degree          | 2                     |
| Overvoltage category      | II                    |
| Insulating material group | II                    |
| EMC compliance            | unshielded            |

### Material

|                       |                                      |
|-----------------------|--------------------------------------|
| Housing material      | PA                                   |
| Contact body material | PA (UL94 HB) grey                    |
| Contact material      | CuZn (brass)                         |
| Contact plating       | Au (gold)                            |
| REACH SVHC            | CAS 7439-92-1 (Lead)                 |
| SCIP number           | dd1e8b8a-0afa-4c16-9231-4e2eb8f0ba38 |

### Classifications

|             |             |
|-------------|-------------|
| eCl@ss 11.1 | 27-44-01-02 |
| ETIM 9.0    | EC002635    |

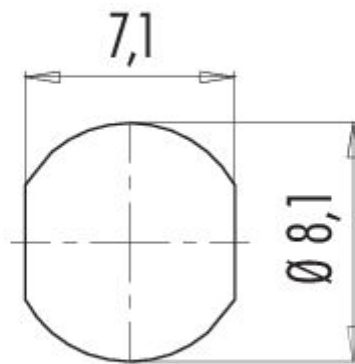
## Product data sheet

### Connectors for medical applications



|                     |  |
|---------------------|--|
| Product description | Snap-In Male panel mount connector, Contacts: 4, unshielded, THT, IP67 |
| Area                | series 620   |
| Part no.            | 99 9211 490 04   |

#### Assembly instructions / Panel cut-out



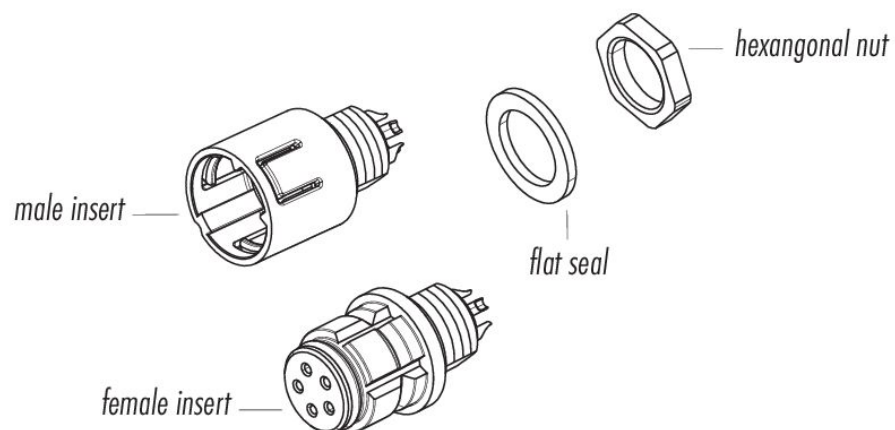
## Product data sheet

### Connectors for medical applications



|                     |   |
|---------------------|---|
| Product description | <b>Snap-In Male panel mount connector, Contacts: 4, unshielded, THT, IP67</b> |
| Area                | <b>series 620</b>   |
| Part no.            | <b>99 9211 490 04</b>   |

#### Component part drawing



## Product data sheet

# Connectors for medical applications



|                     |   |
|---------------------|---|
| Product description | <b>Snap-In Male panel mount connector, Contacts: 4, unshielded, THT, IP67</b> |
| Area                | <b>series 620</b>   |
| Part no.            | <b>99 9211 490 04</b>   |

### General Disclaim Notice

The connector must not be plugged or unplugged under load. Non-observance and improper use can result in personal injury.

The connectors have been developed for applications in plant engineering, control and electrical equipment construction. The user is responsible for checking whether the connectors can also be used in other areas of application.

Connectors which are used in circuits with voltages dangerous to the touch may only be installed and used by, or under the supervision of, persons with electrical engineering training, taking into account the applicable regulations and standards.

The user must take suitable safety precautions to ensure that the connector cannot be accidentally disconnected.

Plug connectors with enclosure protection IP67 and IP68 are not suitable for use under water. When used outdoors, the plug connectors must be protected separately against corrosion. For further information on the IP protection classes, please refer to the "Technical Information" download centre.

The plug connector is not suitable for mains voltages Please observe the pollution degree and the overvoltage category. For further information, please refer to the download center "Technical Information".