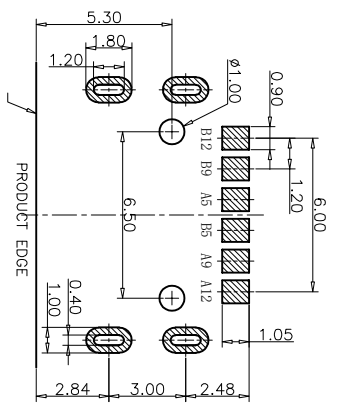
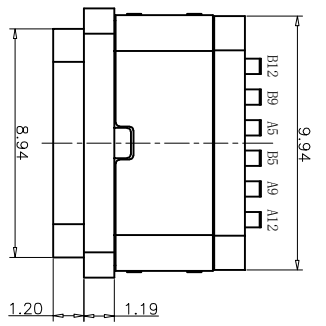
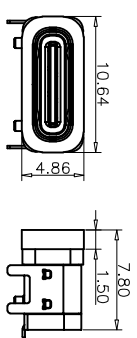
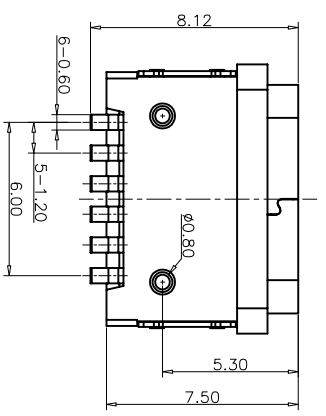
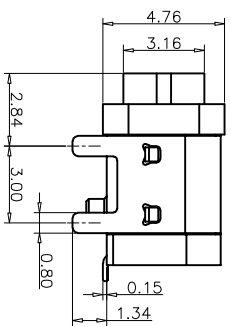
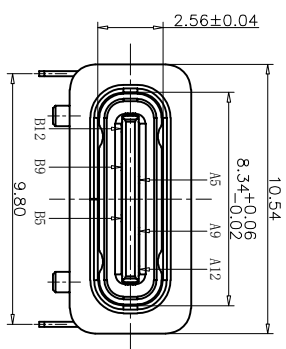
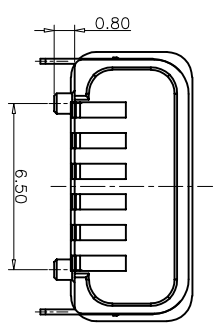


CUSTOMER

REV.	ECN NO.	DESCRIPTION	DATE	DESIGN



RECOMMEND P.C.B LAYOUT(COMPONENT SIDE)
TOLERANCE FOR PCB LAYOUT IS ±0.05



加防水圈示意图

- 备注 (NOTE):
1. 电气特性:
 - 1.1. 接触区: 接触电阻40mΩ Max, 允许10mΩ变化量. 测试条件: 20mv, 100mA下测量.
 - 1.2. 接触电流: 3A VBUS引脚: 1.25A用于GND引脚; 其他引脚为0.25A.
 - 1.3. 额定电压: 5V.
 - 1.4. 耐电压: 100VAC.
 - 1.5. 绝缘电阻: 至少100兆欧.
 2. 机械性能:
 - 3.1. 插入力: 0.5-2.0Kg
 - 3.2. 拔出力: 0.6-2.04Kg
 - 3.3. 插拔次数: 10000次.
 4. 工作环境: -20℃ to +85℃.

USB TYPE C PIN ASSIGNMENTS

PIN NUMBER	SIGNAL NAME	PIN NUMBER	SIGNAL NAME
B12	GND	B12	GND
B9	VBUS	B9	VBUS
A5	CC1	A5	CC1
A9	VBUS	B5	CC2
A12	GND	A12	GND

TABLE:

NO	PART	QTY	Material
1	SHELL	1	STAINLESS STEEL,NI PLATED
2	CONTACT	6	COPPER STEEL,TIN/AU/NI PLATED
3	1MD HOUSING	1	HIGH TEMPERATURE RESISTANT PLASTIC BLACK UL94 V-0
4	2MD HOUSING	1	HIGH TEMPERATURE RESISTANT PLASTIC BLACK UL94 V-0
5	WATERPROOF RING	1	SILICONE UL94 V-0 RED

TOLERANCE		NAME(INTENDED USE) CUSTOMER DRAWING	
X.X ±0.30	X.* ±10'	PART NO.	
.XX ±0.20	.X' ± 8'	FY23-011TC61F175-04	
.XXX ±0.10	.XX' ± 5'	DESIGN: ZXM	
UNITS	mm	CHED:	
MATERILA	----	APPD:	
FINISH	----		

TITLE:		DRAWG NO.	
CF 6P防水七级板上四脚7.5L		FY23-011TC61F175-04	
SCALE		SHEET	
1:1		1/2	
REV.		REV.	
A		A	

FURUO 广东富盈兴业精密科技实业有限公司
Guangdong Furuo Precision Electronic Technology Co.,Ltd.