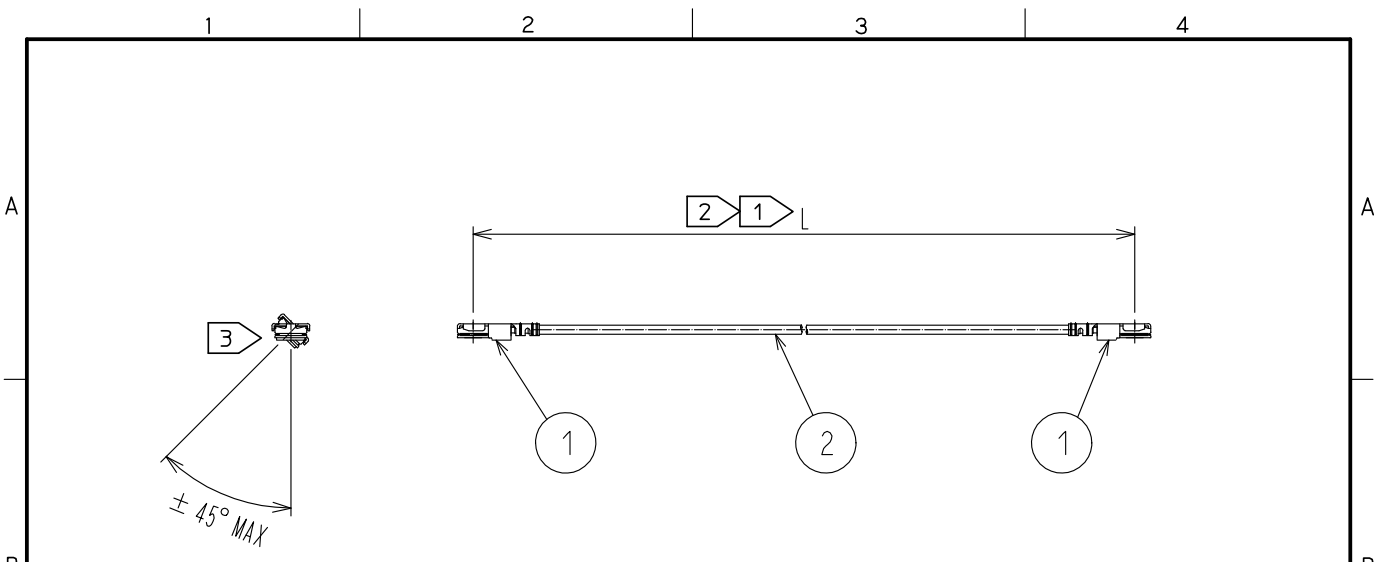


Jun.1.2024 Copyright 2024 HIROSE ELECTRIC CO., LTD. All Rights Reserved.  
 In case of consideration for using Automotive equipment / device which demand high reliability, kindly contact our sales window correspondents.



Part No.	Cable color
~032*1TS~	White
~032*2TS~	Black

NOTE ① We indicate the length of the harness on the last of product name. 'L' part.

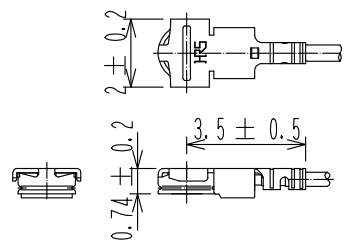
② Tolerance for [ L ]

Length L [mm]	Tolerance [mm]
$35 \leq L \leq 200$	±4
$200 < L \leq 500$	±8
$500 < L \leq 1000$	±12
$1000 < L$	±1.5%

③ Connector rotation angle is within ±45 degree from the above image.  
 For long length in the case of  $L > 100$ , the angle is optional.

4. Specifications are subject to change without notice.

【 DIMENSIONS OF CONNECTOR 】



1	X.FL-LP-032(09)	CL331-0706-1-09	2	0.50 Dia. coaxial cable
NO.	PART NO.	CODE NO.	NO.	PART NO.

HALOGEN FREE

UNITS mm	SCALE FREE	COUNT	DESCRIPTION OF REVISIONS	DESIGNED	CHECKED	DATE
		1	DIS-D-00003278	MS. MATSUMOTO	MT. KANEKO	18.06.22
<b>HRS</b> HIROSE ELECTRIC CO., LTD. APPROVED :NK. NINOMIYA 16.07.23 CHECKED :MT. KANEKO 16.07.23 DESIGNED :MS. MATSUMOTO 16.07.23 DRAWN :MS. MATSUMOTO 16.07.23			DRAWING NO. X.FL-2LP9-032**TS-A-L PART NO.  1 CODE NO.  1/1			