



PennEngineering
Corporate Headquarters – Danboro, PA

5190 Old Easton Rd.

Danboro, PA 18916

Phone: 215-766-8853

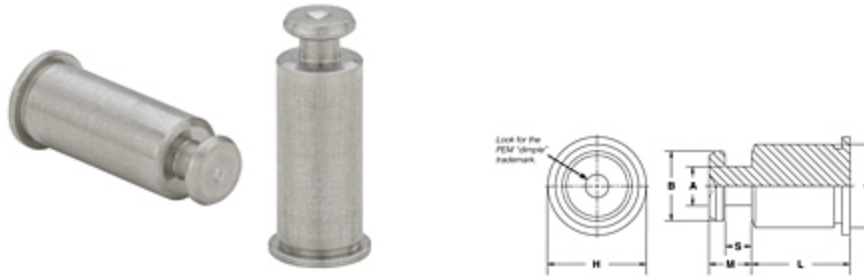
Toll-Free Phone: 1-800-237-4736 (U.S. only)

Email: info@pemnet.com

Website: www.pemnet.com

Part # SKC-61.5-12, KEYHOLE® Self-clinching Standoffs Type SKC™ - Metric

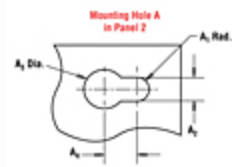
PEM® KEYHOLE® Standoffs are designed so that a PC board or panel can be quickly slipped into place and then removed from an assembly by simply sliding the board sideways and lifting it off. PEM KEYHOLE fasteners can save valuable time and dramatically reduce the amount of loose hardware required. Type SKC can be used for spacing or hanging of replaceable components. Typically, several SKC standoffs are used with one standard PEM threaded standoff which accepts a screw to secure the board or [+ more](#)



Specifications

Panel 1 (Bottom) Sheet Thickness Min.	1.02 mm
Panel 1 (Bottom) Mounting Hole B + 0.08	5.41 mm
Panel 2 (Top) Thickness Range	1.45 to 1.62 mm
Panel 2 (Top) Mounting Hole A1 Nom.	1.5 mm
Panel 2 (Top) Mounting Hole A2 ± 0.08	3 mm
Panel 2 (Top) Mounting Hole A3 ± 0.08	5 mm

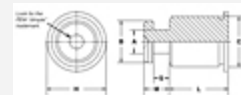
Panel 2 (Top) Mounting Hole A4 Min. 3.75 mm



Panel 1 (Bottom) Sheet Hardness Max.¹ HRB 70 / HB 125

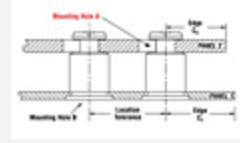
Panel 2 (Top) Material Any

A ± 0.08 2.51 mm



B ± 0.08 4.5 mm

C Max.	5.39 mm
D Anvil Hole + 0.08	5.39 mm
H Nom.	6.35 mm
L - Length ± 0.13	12 mm
M Max.	2.75 mm
S ± 0.08	1.72 mm
	6.60 mm



Panel 1 (Bottom) Edge Distance C1 Min.

Panel 1 (Bottom) Location Tolerance Max. ±.130 in

Panel 2 (Top) Edge Distance C2 Min. 4.1 mm

Standard Material 300 Series Stainless Steel

Standard Finish Passivated per ASTM A380
and/or tested

CAD Supplier PennEngineering® (PEM®)

¹ HRB - Hardness Rockwell "B" Scale. HB - Hardness Brinell.