

## 2.00mm IDC SOCKET & TRANSITION PLUG

.079" [2.00 X 2.00] CENTERLINE  
2FCS & 2FTR SERIES

### INTRODUCTION:

Adam Tech 2FCS Series 2.00mm IDC Sockets are low profile, precision designed flat cable sockets that feature 2.00mm pin to pin and row to row centerlines. These sockets quickly and easily mass terminate flat cable in one simple step. Their versatility allows them to mate with a multitude of 2.00mm pin headers. Our superior selectively gold plated contact design provides a smooth, high pressure wiping action to ensure excellent continuity. They are used with a single layer of 1.00mm flat cable. Their small size, light weight and high density make them ideal for compact and limited space applications.

### FEATURES:

Low Profile and High Density  
Uses Single layer 1.00mm Flat Cable  
Quickly and easily mass terminates standard Flat Cable

### MATING CONNECTORS:

Adam Tech 2.0mm 2BHR series box headers, 2MHR latch headers and 2PH series pin headers

### SPECIFICATIONS:

#### Material:

Insulator: PBT, glass reinforced, rated UL94V-0  
Insulator Color: Black  
Contacts: Phosphor Bronze

#### Contact Plating:

Gold flash (30  $\mu$ in optional) over nickel underplate on contact area, tin over copper underplate on IDC area

#### Electrical:

Operating voltage: 250V AC max.  
Current rating: 1 Amp max.  
Contact resistance: 20 m $\Omega$  max. initial  
Insulation resistance: 3000 M $\Omega$  min.  
Dielectric withstanding voltage: 500V AC for 1 minute

#### Mechanical:

Insertion force: 0.661 lbs per contact max.  
Withdrawal force: 0.044 lbs per contact min.  
Recommended wire size: 30 - 28 Awg stranded  
Cable retention: 24 lbs. min axial force per inch.  
Mating durability: 500 cycles min.

#### Temperature Rating:

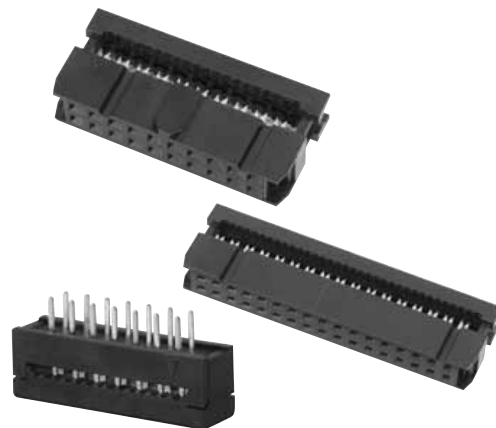
Operating temperature: -40°C to +105°C

#### PACKAGING:

Anti-ESD plastic trays

#### SAFETY AGENCY APPROVALS:

UL Recognized & CSA Certified, File no. E224053



### ORDERING INFORMATION

2FCS

40

SG

#### SERIES INDICATOR

2FCS = 2.00mm  
Flat Cable  
IDC Socket

2FTR = 2.00mm  
Flat Cable  
Transition Plug

#### PLATING OPTIONS

SG = Selectively  
Gold-Plated

#### POSITIONS

2FCS:  
06, 08, 10, 12, 14, 16, 18, 20, 22,  
24, 26, 34, 36, 40, 44, 50, 60, 68

2FTR:  
08, 10, 12, 14, 16, 20, 22, 24, 26,  
30, 34, 40, 44, 50, 68

#### NOTE:

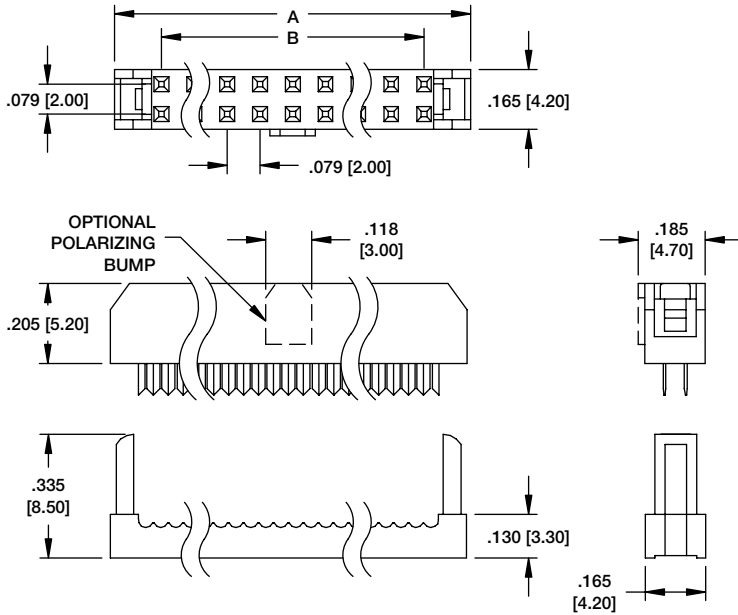
Mating Box Headers for 2FCS series located on page 302-303

#### OPTIONS:

Add designator(s) to end of part number  
30 = 30  $\mu$ in gold plating in contact area  
PB = Polarizing bump



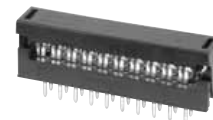
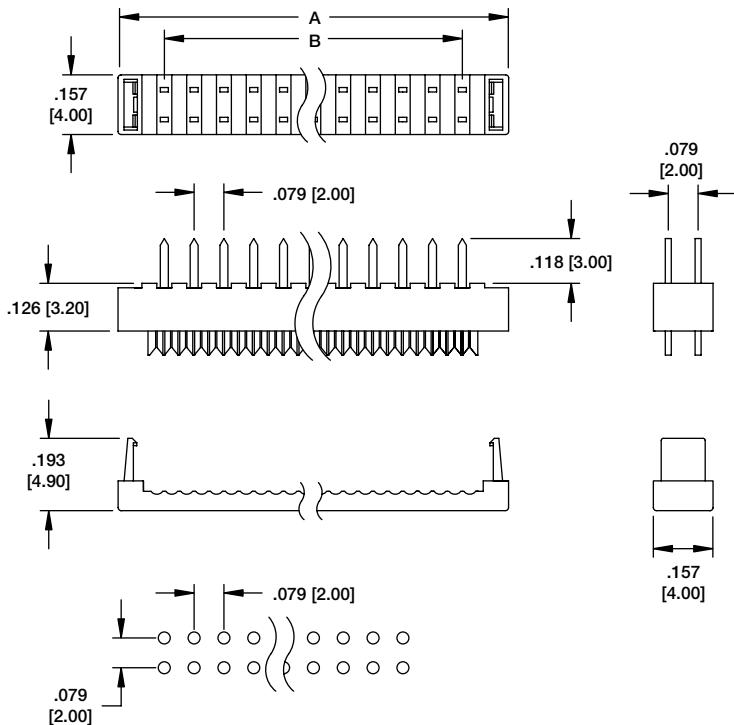
### 2FCS



2FCS-20-SG

PART No. & POSITIONS	DIMENSIONS	
	A	B
2FCS-20-SG	.992 [25.10]	.709 [18.00]
2FCS-22-SG	1.071 [27.20]	.787 [20.00]
2FCS-24-SG	1.150 [29.20]	.866 [22.00]
2FCS-26-SG	1.228 [31.00]	.945 [24.00]
2FCS-34-SG	1.543 [39.20]	1.260 [32.00]
2FCS-36-SG	1.622 [41.20]	1.339 [34.00]
2FCS-40-SG	1.780 [45.10]	1.496 [38.00]
2FCS-44-SG	1.937 [49.20]	1.654 [42.00]
2FCS-50-SG	2.773 [55.10]	1.890 [48.00]
2FCS-60-SG	2.567 [65.20]	2.283 [58.00]
2FCS-68-SG	2.882 [73.20]	2.598 [66.00]

### 2FTR



2FTR-20-T

PART No. & POSITIONS	DIMENSIONS	
	A	B
2FTR-08-T	.480 [12.20]	.236 [6.00]
2FTR-10-T	.559 [14.20]	.315 [8.00]
2FTR-12-T	.637 [16.20]	.3937 [10.00]
2FTR-14-T	.716 [18.20]	.472 [12.00]
2FTR-16-T	.795 [20.20]	.551 [14.00]
2FTR-20-T	.952 [24.20]	.629 [16.00]
2FTR-22-T	1.031 [26.20]	.708 [18.00]
2FTR-24-T	1.110 [28.20]	.866 [22.00]
2FTR-26-T	1.189 [30.20]	.945 [24.00]
2FTR-34-T	1.503 [38.20]	1.260 [32.00]
2FTR-40-T	1.740 [44.20]	1.496 [38.00]
2FTR-44-T	1.897 [48.20]	1.654 [42.00]
2FTR-50-T	2.133 [54.20]	1.890 [48.00]
2FTR-68-T	2.842 [72.20]	2.598 [66.00]

Recommended PCB Layout